



## 8 Wintle Road, THE OAKS, NSW 2570

### Executive excellence on 975m2

If you are looking for a classy executive residence in The Oaks' premier residential estate—this has to be the one! The stunning facade is just the beginning of a property oozing class and style throughout and it has a most relaxed open layout.

The wide entrance hall leads to the luxurious main with chic new ensuite and walk-in robe. Freshly re-sanded spotted gum veneer timber floors to entrance and living areas. The morning light shines beautifully into the open plan kitchen/lounge, dining and alfresco area out the back. And the brand new Cobbitty Grove kitchen has it all! Stone bench tops, soft close draws, Bosch gas cooktop, wall oven, large butler's pantry, classy bulk head ceiling, Island bench with dual sink and Bosch dishwasher. Sensational new main bathroom. High ceilings. Two zoned Samsung ducted air. Internal access to large double garage. 7KW Solar panels.

Outdoors the generous Merbau decked gabled undercover area overlooks the superb sunny grassed playing yard. The land is a superb 975m2 with 24.5 metres street frontage. There is ample side access and there is a good sized shed even with its own alfresco area. Bonus water tank.

All this in the beautiful country township of The Oaks and you are also just a scenic 15

The particulars contained herein are supplied for information only and shall not be taken as a representation in any respect on the part of the vendor or its agent. Interested parties should contact the nominated person or office for full and current details.

**TYPE:** Sold

**INTERNET ID:** 102P1478

#### SALE DETAILS

**\$1,440,000**

#### CONTACT DETAILS

**Elders Real Estate Picton**

8/2 Margaret Street  
PICTON, NSW  
02 46 771 958

**Jaimie Blackmore**  
0400 043 043

minute drive to Camden or Picton town centre. Time to escape the hustle and bustle!

Disclaimer: Whilst Elders Real Estate Picton has endeavoured to gather as accurate information as possible from reliable sources in relation to the above property, we recommend any interested party to rely on their own enquiries and seek independent professional advice prior to making any decision to purchase. Elders Real Estate Picton and its staff do not guarantee the accuracy of the information provided and shall not accept liability for any loss or damage arising from the reliance on information contained in this advertisement

- Land Area 975.00 square metres
- Bedrooms: 4
- Bathrooms: 2
- Double garage

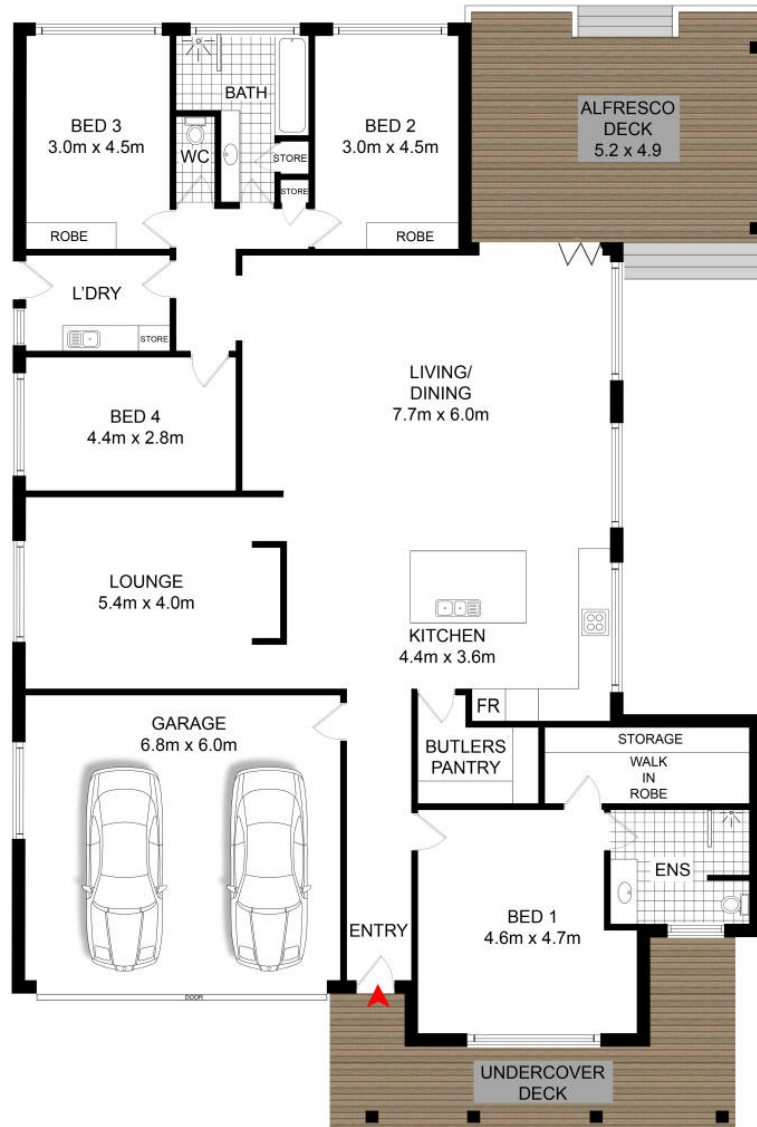












8 WINTLE ROAD,  
THE OAKS

DISCLAIMER: WE HAVE OBTAINED ALL INFORMATION IN THIS DOCUMENT FROM SOURCES WE BELIEVE TO BE RELIABLE. HOWEVER, WE CANNOT GUARANTEE ITS ACCURACY. PROSPECTIVE PURCHASERS ARE ADVISED TO CARRY OUT THEIR OWN INVESTIGATIONS