



18 Station Street, THIRLMERE, NSW 2572

Experience the semi rural dream! 1014m2

This charming ranch styled home is located a stones throw away from the centre of Thirlmere, whilst also boasting a quiet "rural" like atmosphere. The master bedroom is spacious, complimented by a large bay window, built in robe and private ensuite. Remaining 3 bedrooms are located down at the rear of the home, with easy access to main bathroom which has separate bath, toilet and shower. Light-filled timber kitchen with wall-mount oven, double sink and electric stove top, overlooking the lush backyard and formal dining. Main living area is great in size with original bar and combustion fire place. Double attached garage with wet weather access and drive through space.

Fantastic sized level yard with established gardens and plenty of room for a shed, pool or granny flat (subject to Council approval)

Perfect quiet location in the growing township of Thirlmere... first home buyers and young families, do not miss this opportunity!

Disclaimer: Whilst Elders Real Estate Picton has endeavoured to gather as accurate information as possible from reliable sources in relation to the above property, we

The particulars contained herein are supplied for information only and shall not be taken as a representation in any respect on the part of the vendor or its agent. Interested parties should contact the nominated person or office for full and current details.

TYPE: Sold

INTERNET ID: 102P1481

SALE DETAILS

\$761,000

CONTACT DETAILS

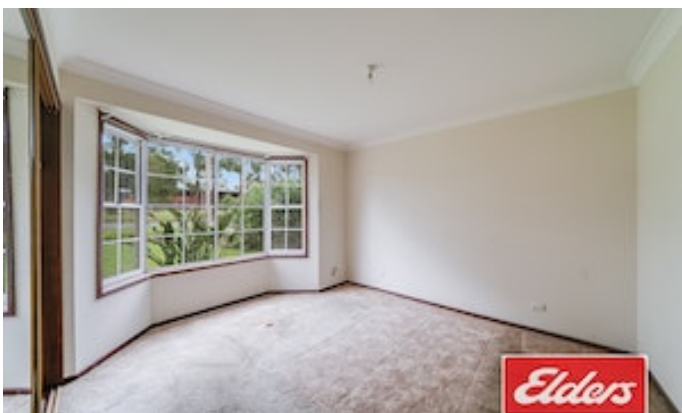
Elders Real Estate Picton

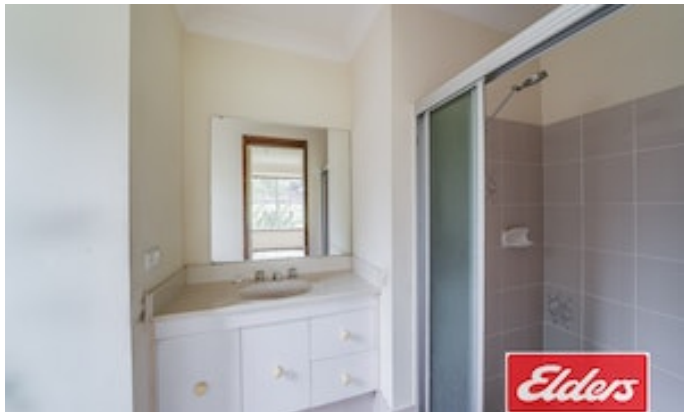
8/2 Margaret Street
 PICTON, NSW
 02 46 771 958

Jaimie Blackmore
 0400 043 043

recommend any interested party to rely on their own enquiries and seek independent professional advice prior to making any decision to purchase. Elders Real Estate Picton and its staff do not guarantee the accuracy of the information provided and shall not accept liability for any loss or damage arising from the reliance on information contained in this advertisement.

- Land Area 1,014.00 square metre
- Bedrooms: 4
- Bathrooms: 2
- Double garage







Elders
Real Estate



FLOOR PLAN

This floor plan including furniture, fixture measurements and dimensions are approximate and for illustrative purposes only.
BoxBrownie.com gives no guarantee, warranty or representation as to the accuracy and layout.
All enquiries must be directed to the agent, vendor or party representing this floor plan.