

## 55 Railway Parade, CONDELL PARK, NSW 2200

### MODERN BRICK DUPLEX IN SOUGHT AFTER LOCATION

Contemporary design duplex showcasing quality finishes is this dual level family home offering ample natural light, a superb collection of free-flowing interiors and a streamlined design.

Attributes include:

- Four bedrooms with built in robes
- Master bedroom with ensuite
- Large lounge and dining room
- Two bathrooms with free standing bath in main
- Modern kitchen with stone bench top, dishwasher and gas cooktop
- Flowing access to covered pergola overlooking rear yard
- Quality tiles downstairs and timber flooring upstairs
- Ducted Daikin air conditioner, alarm system and video intercom

The particulars contained herein are supplied for information only and shall not be taken as a representation in any respect on the part of the vendor or its agent. Interested parties should contact the nominated person or office for full and current details.

**TYPE:** For Sale

**INTERNET ID:** 103P0631

**SALE DETAILS**

**For Sale | \$1,280,000**

**CONTACT DETAILS**

**Tony Khoury**  
0416 250 350

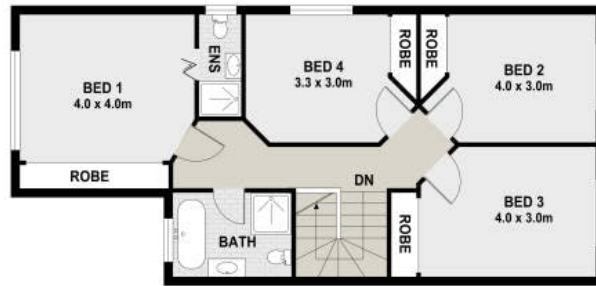
- Lock-up automatic garage with internal access

- Handy to Condell Park shops, schools and transport

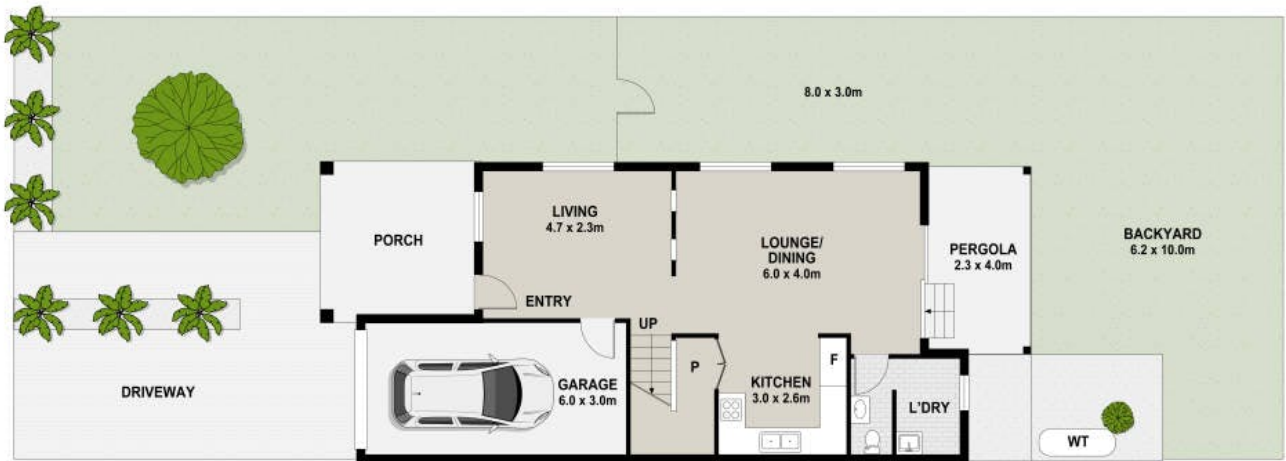
- Bedrooms: 4
- Bathrooms: 2
- Car Parks: 1
- Single garage







FIRST FLOOR



GROUND FLOOR

## 55 Railway Parade, Condell Park

### DISCLAIMER

PLANS SHOWN ARE FOR MARKETING PURPOSES ONLY. ALL DIMENSIONS ARE APPROXIMATE AND NOT TO SCALE. THEY ARE SUBJECT TO ERRORS AND INACCURACIES AND NO LIABILITY WILL BE ACCEPTED. INTERESTED PARTIES SHOULD MAKE THEIR OWN ENQUIRIES.