



54 Mons Avenue, MAROUBRA, NSW 2035

Prime Coastal Investment: Secure Block of 7 in Maroubra (1 Without Council Approval)

Rare Maroubra Opportunity â## First Time Offered in Over 30 Years!

Set on an expansive 955sqm block in a sought-after coastal location, this exceptional property presents an unparalleled investment or redevelopment opportunity subject to council approval.

This unique offering has enormous potential with its extensive uninterrupted views over Maroubra Beach, its foreshores and beyond.

Positioned close to famous Maroubra Beach and a short walk to Maroubra Junction Shopping Precinct, local shops, cafes, and transport.

It features;

4 x 2 Bedrooms

2 x 1 Bedrooms

The particulars contained herein are supplied for information only and shall not be taken as a representation in any respect on the part of the vendor or its agent. Interested parties should contact the nominated person or office for full and current details.

TYPE: Auction

INTERNET ID: 106P1201

AUCTION DETAILS

11:00am, Saturday
November 1st, 2025

CONTACT DETAILS

Elders Double Bay
Suite 2/8 Manning Road
DOUBLE BAY, NSW
02 9362 1700

Paul Troyanovsky
0411 599 969

1 x 1 Bedroom (Without Council Approval)

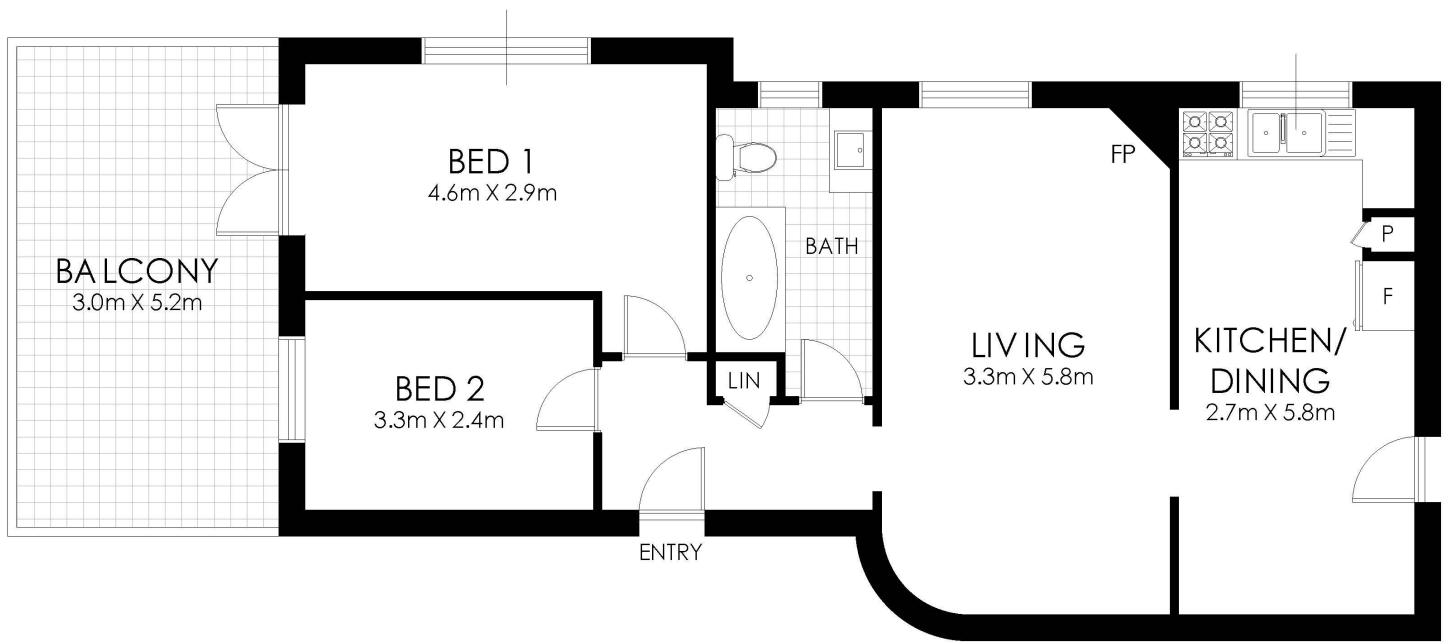
4 Lock Up Garages

Disclaimer: Elders Double Bay have no reason to doubt the accuracy of the property information provided. We request that at all times you inspect the property and make & rely upon your own enquiries.

Other features: Area Views, Close to Schools, Close to Shops, Close to Transport, Ocean Views, Openable Windows

- Bedrooms: 11
- Bathrooms: 7
- Car Parks: 4
- Floorboards





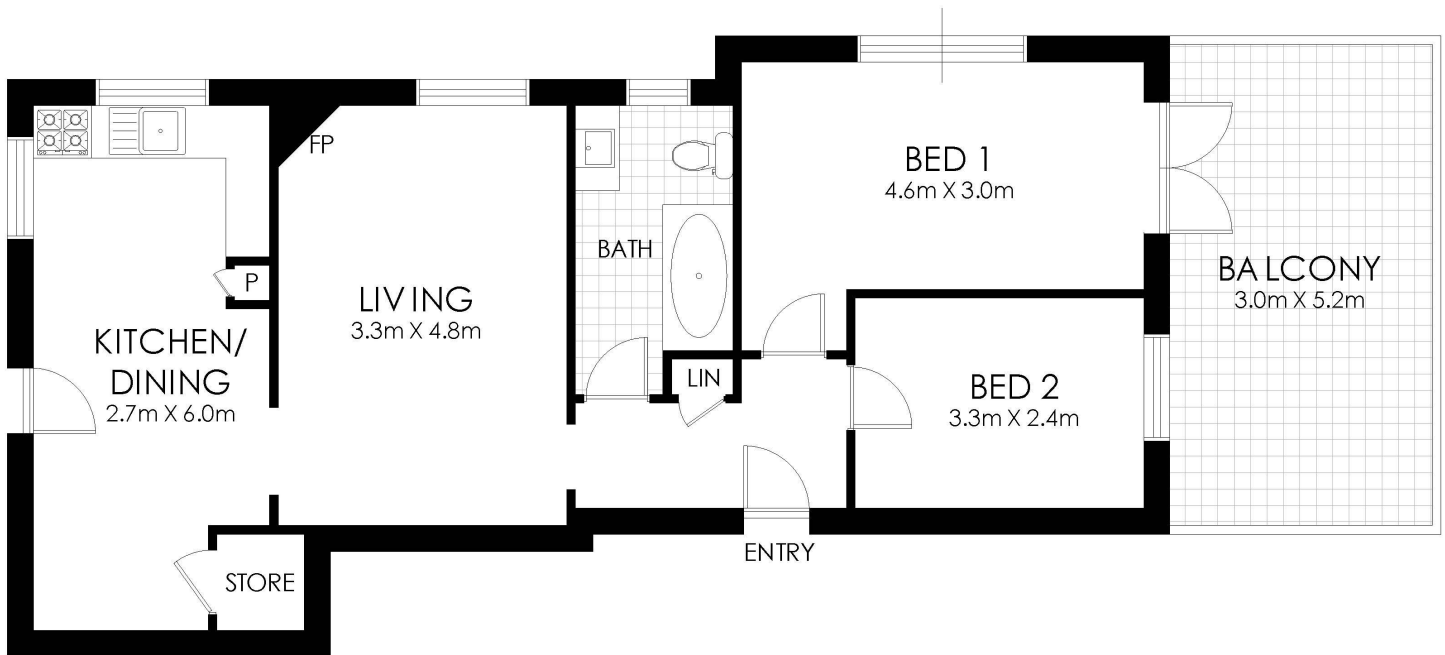
FLOOR PLAN



1/54 Mons Avenue, Maroubra

WARNING: DISCLAIMER This information is not to be relied upon. It is strictly used for marketing and illustration purposes only. All measurements are approximate. Not to scale. No liability accepted. You must rely on your own inquiries and seek advice from your solicitor.

Experience **Elders** Real Estate Double Bay



FLOOR PLAN



2/54 Mons Avenue, Maroubra

WARNING: DISCLAIMER This information is not to be relied upon. It is strictly used for marketing and illustration purposes only. All measurements are approximate. Not to scale. No liability accepted. You must rely on your own inquiries and seek advice from your solicitor.

Experience **Elders** Real Estate Double Bay