

## 6/40 Dutruc Street, RANDWICK, NSW 2031

### Affordable Housing Scheme Apartment in Randwick!

Ideally set within a quiet, well-maintained boutique complex, this apartment presents an outstanding investment opportunity, offered at an attractive price point under the affordable housing rental scheme.

The Apartment boasts a smart, functional layout over two levels with light-filled living and dining spaces, delivering comfortable, low-maintenance living in one of the Eastern Suburbs' most sought-after pockets.

Enjoy unbeatable convenience just moments from Randwick Village, UNSW, Prince of Wales Hospital and excellent public transport options including the light rail. A vibrant selection of caf  s, shops and everyday amenities are close by, while the iconic beaches of Coogee and Maroubra are only a short drive away.

Property highlights include:

- Two generously proportioned bedrooms, master with ensuite
- Two well-appointed bathrooms

**TYPE:** For Sale

**INTERNET ID:** 106P1977

**SALE DETAILS**

**For Sale**

**CONTACT DETAILS**

**Elders Double Bay**  
Suite 2/8 Manning Road  
DOUBLE BAY, NSW  
02 9362 1700

**Paul Troyanovsky**  
0411 599 969

- Bright open-plan living and dining area
- Functional kitchen with ample storage
- Quiet, well-maintained boutique complex
- Secure parking

Prime Randwick location close to transport, shops and amenities

Offering lifestyle, convenience and long-term growth potential, this property is an excellent opportunity to enter the Randwick market or add to a quality investment portfolio.

Disclaimer: Elders Double Bay have no reason to doubt the accuracy of the property information provided. We request that at all times you inspect the property and make & rely upon your own enquiries.

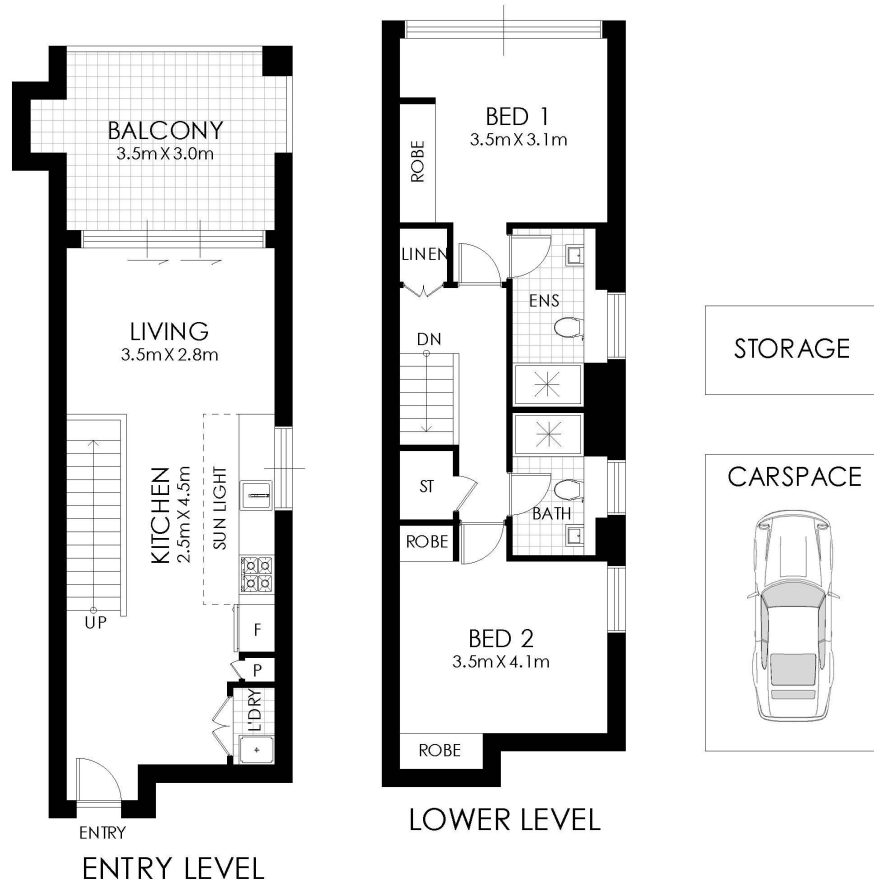
Other features: Car Parking - Basement, Carpeted, Close to Schools, Close to Shops, Close to Transport

- Bedrooms: 2
- Bathrooms: 2
- Car Parks: 1
- Ensuite
- Floorboards









## 6/40 Dutruc Street, Randwick

**WARNING: DISCLAIMER** This information is not to be relied upon. It is strictly used for marketing and illustration purposes only. All measurements are approximate. Not to scale. No liability accepted. You must rely on your own inquiries and seek advice from your solicitor.

Experience **Elders** Real Estate Double Bay