



8/538 President Avenue, SUTHERLAND, NSW 2232

Quietly Positioned with a Leafy Outlook

Enjoying a privileged top floor position and quietly set back from the street this apartment benefits from generous internal spaces throughout. Conveniently located, it is just moments from Sutherland CBD, shopping centres and train station for an easy city commute.

- Combined open plan living / dining area with floating floors
- Two good-sized bedrooms, main fitted with built-in wardrobe
- Modern kitchen offers breakfast bar and ample cupboard
- Updated bathroom including separate bath tub and shower
- Pleasant elevated leafy outlook from almost every window
- North facing sheltered balcony overlooking green space
- Air-conditioning for living areas, generous internal laundry
- Just a short walk to local shopping centres and train station

TYPE: Sold

INTERNET ID: 110P0641

SALE DETAILS

For Sale

CONTACT DETAILS

Sylvania

3/202 Princes Highway
SYLVANIA, NSW
02 9522 6999

Michelle Michell

0407 212 755

- Single lock-up garage

Strata Levies: \$856 p/q approx.

Council Rates: \$359 p/q approx.

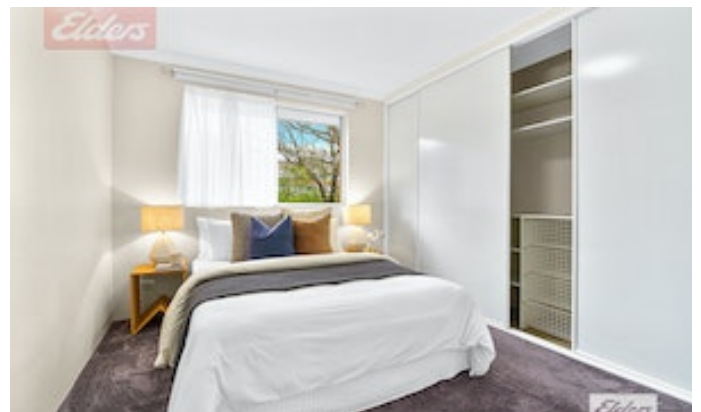
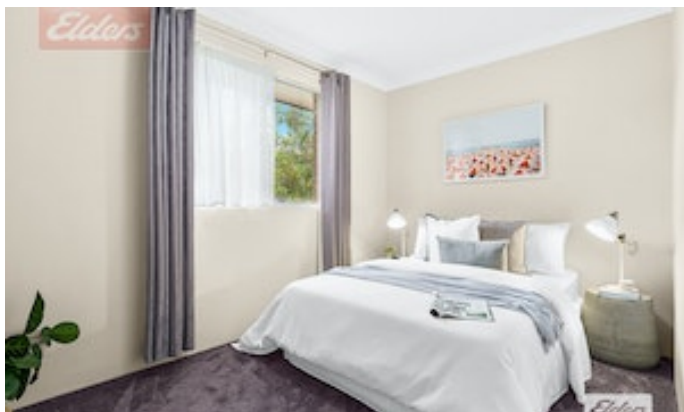
Water Rates: \$160 p/q approx.

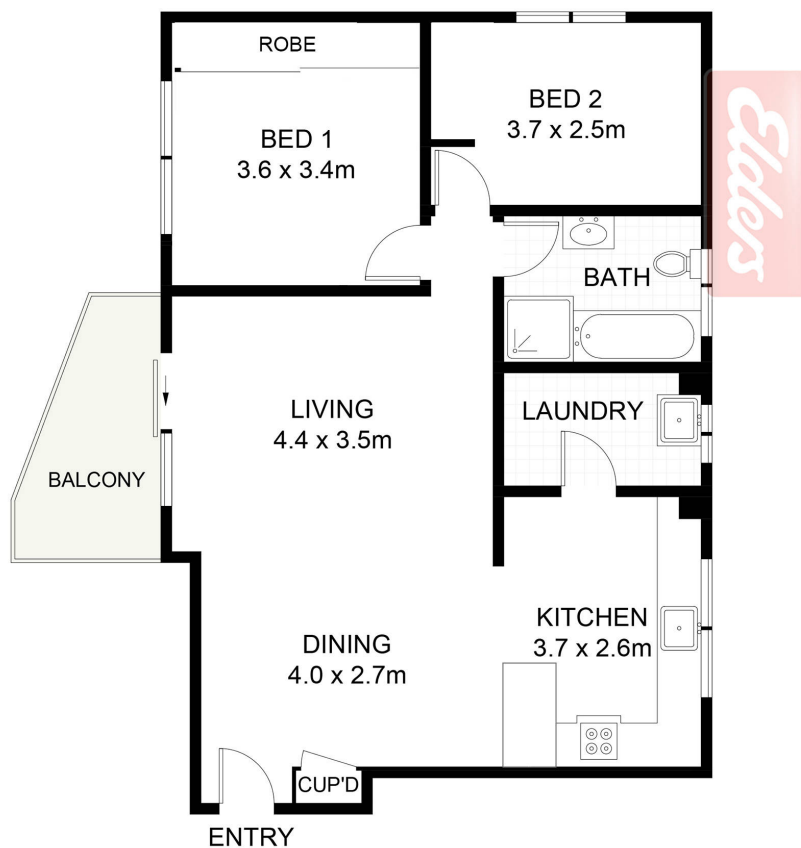
Total Area: 94sqm

UNDER CONTRACT

Other features: Close to Schools, Close to Shops, Close to Transport

- Bedrooms: 2
- Bathrooms: 1
- Single garage
- Floorboards





(NOT SHOWN IN ACTUAL
LOCATION / ORIENTATION)



8/538 President Avenue, Sutherland

Scale in metres. Indicative only. Dimensions are approximate. All information contained herein is gathered from sources we believe to be reliable. However, we cannot guarantee its accuracy and interested persons should rely on their own enquiries.