



8/28 Leonay Street , SUTHERLAND, NSW 2232

Ground Floor Apartment

With very few stairs and easy access to the picturesque communal gardens this ground floor apartment is ideal for young and old. Conveniently located, it is just moments to Sutherland CBD, shopping, restaurants and train station.

- Two bedrooms with built-in robes and glass sliding doors
- Fully tiled main bathroom with separate bath and shower
- Immaculately maintained kitchen includes dishwasher
- Bright combined living and dining area with air conditioning
- Much loved character filled property ready for updating
- Affordable strata levies make for an excellent investment
- Garden terrace is an ideal spot for to enjoy the sunny aspect
- Embracing well-presented communal areas and gardens
- Single lock-up garaging in basement is easily accessible

TYPE: Sold

INTERNET ID: 110P0656

SALE DETAILS

For Sale \$580,000 - \$620,000

CONTACT DETAILS

Sylvania
3/202 Princes Highway
SYLVANIA, NSW
02 9522 6999

Michelle Michell
0407 212 755

The particulars contained herein are supplied for information only and shall not be taken as a representation in any respect on the part of the vendor or its agent. Interested parties should contact the nominated person or office for full and current details.

- Moments to Sutherland CBD, shopping and train station

Strata: \$521 p/q approx.

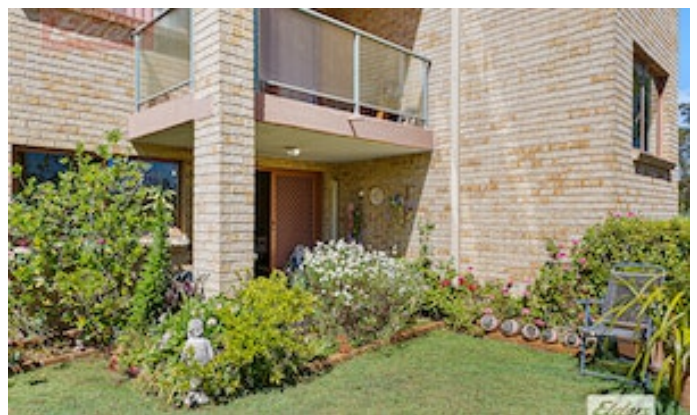
Council: \$331 p/q approx.

Water: \$160 p/q approx.

Total Area: 94sqm

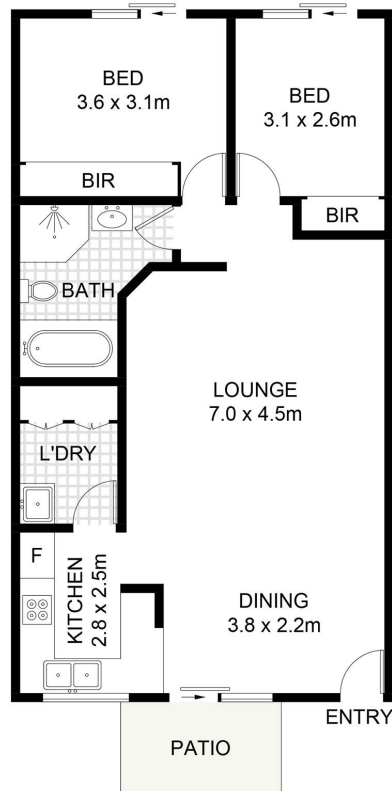
Other features: Car Parking - Basement, Carpeted, Close to Schools, Close to Shops, Close to Transport

- Building Area: 94.00 square metres
- Bedrooms: 2
- Bathrooms: 1
- Single garage





(NOT SHOWN IN ACTUAL LOCATION / ORIENTATION)



8/28-34 Leonay Street, Sutherland

Scale in metres. Indicative only. Dimensions are approximate. All information contained herein is gathered from sources we believe to be reliable. However, we cannot guarantee its accuracy and interested persons should rely on their own enquiries. Some images may contain digital furniture.