



531 Port Road, WEST CROYDON, SA 5008

Character Bungalow converted into Professional Offices comprising of approx. 115m² of Enclosed Office Space in a Prominent Location with Rear Parking

This Bungalow on approx. 557m² of land offers:

- Vacant possession available
- Four main rooms set up as a reception area, main office, boardroom and open plan office with enough room for 4 x workstations.
- Bonus storage / stationary room
- Kitchen area with adjacent male and female toilets (Female toilet is also handicapped toilets)
- Ducted reverse cycle air-conditioning to all main offices and boardroom
- Monitored security alarm
- Original character features with leadlight windows and feature cornices
- Data and landline phone system in place

TYPE: Sold

INTERNET ID: 11294383

SALE DETAILS

\$510,000

CONTACT DETAILS

ELDERS ON GRANGE

184 Grange Road
FLINDERS PARK, SA
08 8354 2424
RLA: 184226

Gary Krievs
0422 071 317

- Rewired with a new electrical board
- Rear yard converted into a concrete car park for 5 x cars
- Current office was established in 1994

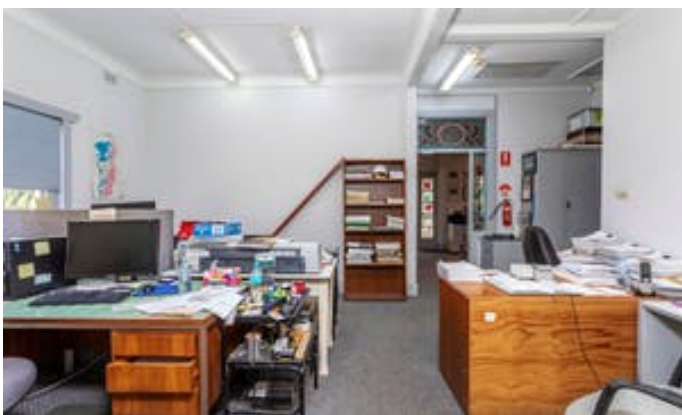
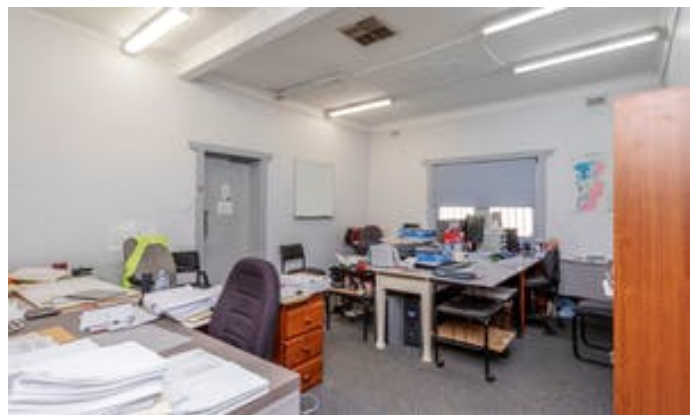
Take advantage of this unique opportunity with the option to use significant signage with over 46,000 cars driving past daily. (Ref DPTI Traffic Volumes doc.)

Ideal location directly opposite the Welland Plaza Shopping Centre and close proximity to Buses, Trains & Trams.

Please call Gary Krievs on 0422 071 317 to inspect by appointment only.

Other features: Close to Shops, Close to Transport, Secure Parking

- Land Area 557.00 square metres
- Building Area: 115.00 square metres
- Bedrooms: 3
- Car Parks: 5
- Air Conditioning







Landscaping in this image is Artist impression only.