



## 52 Berrima Parade, SURFSIDE, NSW 2536

### Where Every Day Feels Like Home

From the moment you arrive, this charming family home welcomes you with a classic picket fence, instantly setting a warm and inviting tone. A separate garage positioned at the front not only adds convenience but enhances the sense of privacy as you step inside.

Offering three comfortable bedrooms, each fitted with mirrored built in robes, the home has been thoughtfully updated to ensure everyday comfort. The lounge room greets you with a beautiful bay window, allowing natural light to pour in while tinted glass provides both openness and privacy.

Designed with practicality in mind, the home features security mesh screens throughout, along with a ceiling fan and air conditioning in the living area to keep you comfortable year round. The layout flows seamlessly into the main bedroom and a well appointed bathroom, complete with a bath, perfect for families with young children.

At the heart of the home, you will find an inviting open plan living space with tiled floors and a wood heater, adding both warmth and a cozy ambience during cooler months. This central hub effortlessly connects indoor and outdoor living.

Step through the glass sliding doors onto the rear deck, where a true sense of tranquillity awaits. Enjoy your morning cuppa as the sunlight filters through and the sound of birdsong creates a peaceful start to your day.

The particulars contained herein are supplied for information only and shall not be taken as a representation in any respect on the part of the vendor or its agent. Interested parties should contact the nominated person or office for full and current details.

**TYPE:** For Sale

**INTERNET ID:** 121P0365

**SALE DETAILS**

**\$769,000**

**CONTACT DETAILS**

**Rebecca Shephard**  
0413 580 309

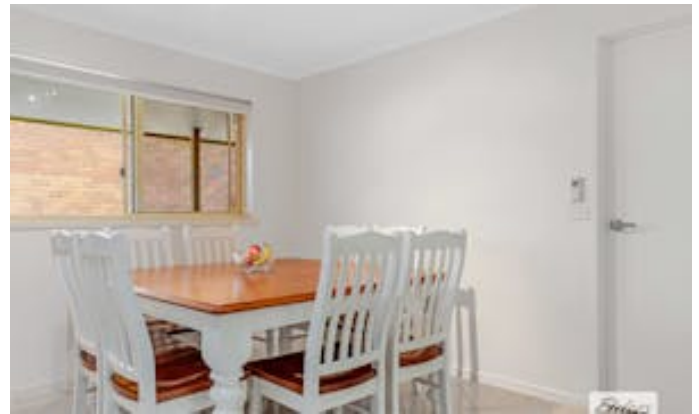
The fully enclosed yard is low maintenance, making it ideal for busy families or those simply wanting to relax and enjoy their surroundings.

This is a home that truly wraps itself around you, offering comfort, practicality and a peaceful place to unwind at the end of each day. Whether you are enjoying quiet moments on the deck, gathering with family in the heart of the home, or simply appreciating the sense of privacy throughout, it is a place where lasting memories are made and a genuine sense of home is felt from the moment you arrive.

**DISCLAIMER:** The information contained in the advertising of this property is based on information provided to the agents, and the vendor and agents expressly disclaim any liability arising therefrom. The accuracy of the information cannot be guaranteed, and prospective purchasers should make their own enquiries and form their own judgement as to these matters.

Other features: Car Parking - Surface, Carpeted, Heating, Openable Windows

- Land Area 601.00 square metres
- Bedrooms: 3
- Bathrooms: 1
- Single garage

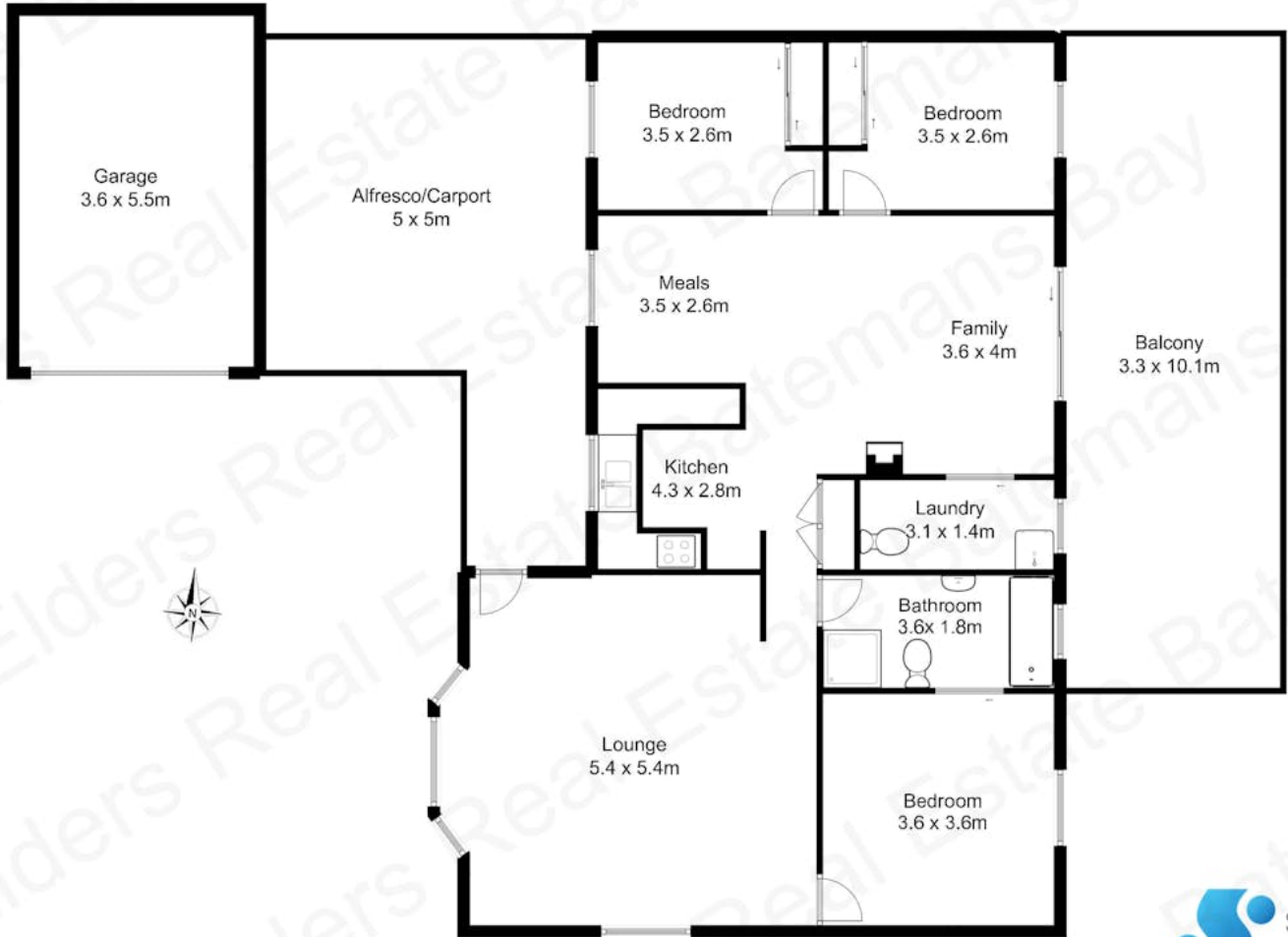








Approximate floor area  
185 square metres  
Excluding Garage



All measurements and boundaries are approximate and are intended as a guide only

