

1/2 Foam Street, SURFSIDE, NSW 2536

Relaxed Coastal Living in the Heart of Surfside

Set in a quiet pocket of Batemans Bay's sought-after Surfside, this two-bedroom, two-storey unit at 1/2 Foam Street is a perfect blend of comfort, practicality and location. Whether you're buying your first home or adding to your investment portfolio, this is a low-maintenance opportunity just moments from the sand.

Step inside to find light, fresh timber-look flooring that gives the home an airy, coastal feel. The solid double-brick construction paired with a concrete-suspended ceiling offers great insulation and peace of mind.

Downstairs, the open-plan kitchen comes complete with an induction cooktop, electric oven, and plenty of storage-including under-stair space and built-in robes in both bedrooms. The bathroom is neat and functional, with the added bonus of a separate toilet.

Upstairs, a generous living space flows out onto a private balcony-perfect for enjoying your morning coffee or catching the sea breeze as the sun sets.

There's also internal access from the single garage and a spacious backyard that's

TYPE: For Sale

INTERNET ID: 121P0454

SALE DETAILS

\$549,000

CONTACT DETAILS

,

Rebecca Shephard
0413 580 309

easy to maintain-ideal for weekend barbecues or simply relaxing in the sun.

Just a short walk to the beach, local shops, and cafes, this well-kept unit delivers an easy coastal lifestyle in a tightly held area.

Affordable, convenient and full of potential-this Surfside gem won't last long.

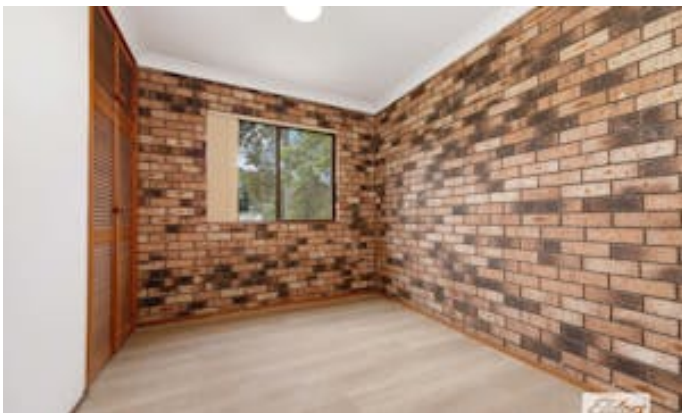
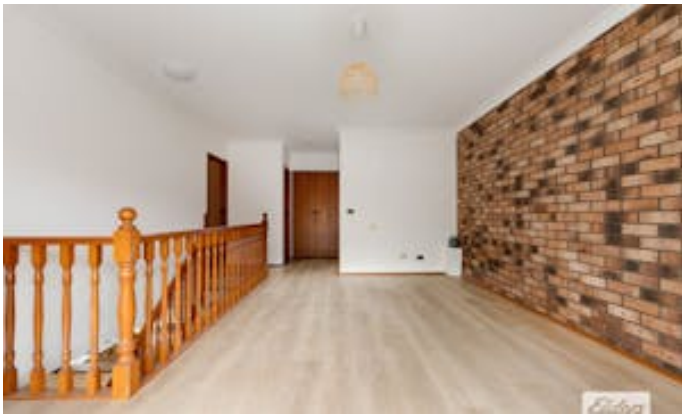
Currently tenanted, this property offers immediate rental income for investors looking to step straight into a solid return.

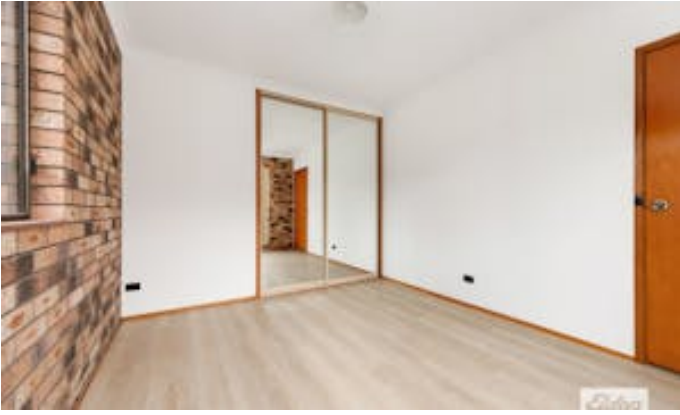
DISCLAIMER: The information contained in the advertising of this property is based on information provided to the agents, and the vendor and agents expressly disclaim any liability arising therefrom. The accuracy of the information cannot be guaranteed, and prospective purchasers should make their own enquiries and form their own judgement as to these matters.

Other features: Close to Shops

- Building Area: 88.00 square metres
- Bedrooms: 2
- Bathrooms: 1
- Single garage

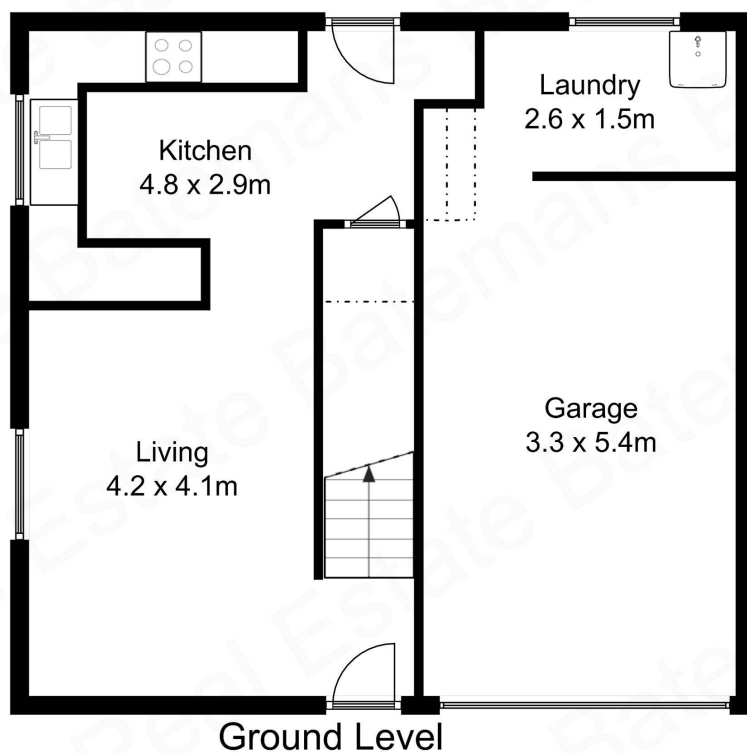
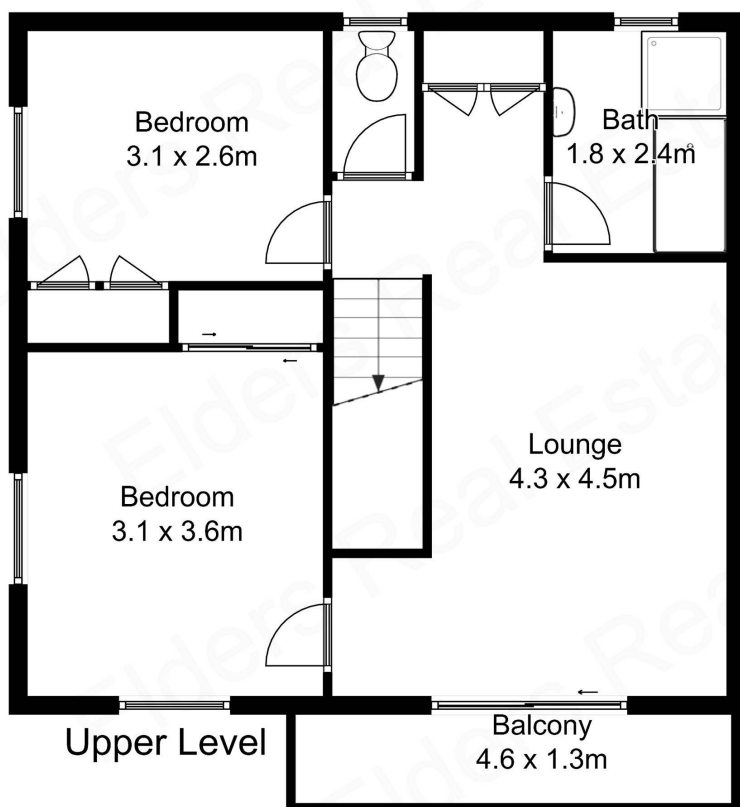








Approximate floor area
122 square metres
including balcony



All measurements are approximate and are intended as a guide only