

16 Murray Street, MORUYA, NSW 2537

SINGLE LEVEL HOME ON LARGE BLOCK

Introducing a charming, single-level house at 16 Murray Street, Moruya, perfectly suited for first-time homebuyers, investors and those looking to downsize. Nestled at the quiet end of the street, this delightful home is just a stone's throw away from Moruya town, offering convenient access to clubs, schools, shops and cafes, as well as the picturesque Moruya River.

The property boasts a generous land size of 1011 square metres, providing ample space for expansion, landscaping or gardening. The large, fully fenced block offers an added sense of privacy and security, making it an ideal sanctuary for you and your family. Parking is made easy with the inclusion of a single garage and an additional parking space.

The house itself features two well-sized bedrooms and one bathroom, with the added bonus of an extra room off the garage, perfect for use as a home office, lock-up storage, gym or even a spare bedroom (the possibilities are endless). A ramp to the back yard ensures easy accessibility, whilst the partially enclosed back veranda serves as an excellent spot to unwind and enjoy the peaceful surroundings.

Investors will appreciate the property's potential for strong rental returns and future

The particulars contained herein are supplied for information only and shall not be taken as a representation in any respect on the part of the vendor or its agent. Interested parties should contact the nominated person or office for full and current details.

TYPE: Sold

INTERNET ID: 121P4371

SALE DETAILS

\$578,000

CONTACT DETAILS

,

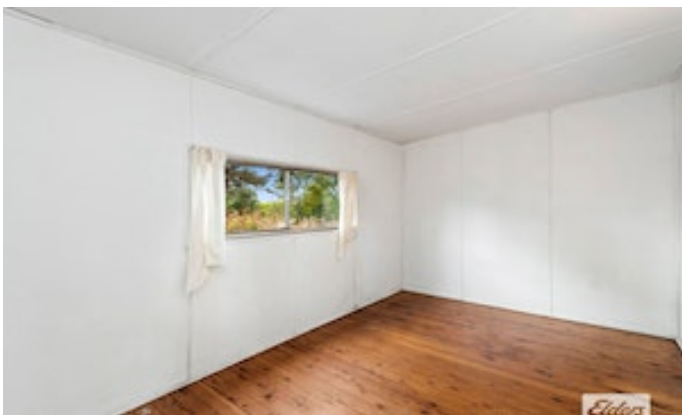
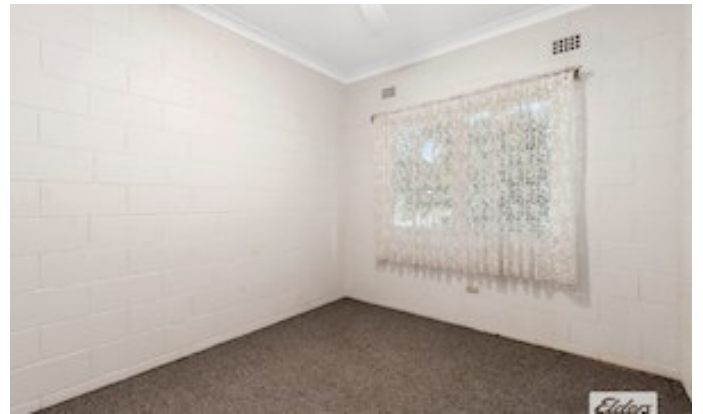
Rebecca Shephard
0413 580 309

capital growth, while first home buyers and downsizers will find it a perfect blank canvas to personalise and make their own.

Don't miss out on this fantastic opportunity to secure a versatile property in a prime location. Book your inspection today and discover the potential of 16 Murray Street, Moruya, NSW, 2536.

- Land Area 1,011.00 square metre
- Bedrooms: 2
- Bathrooms: 1
- Single garage

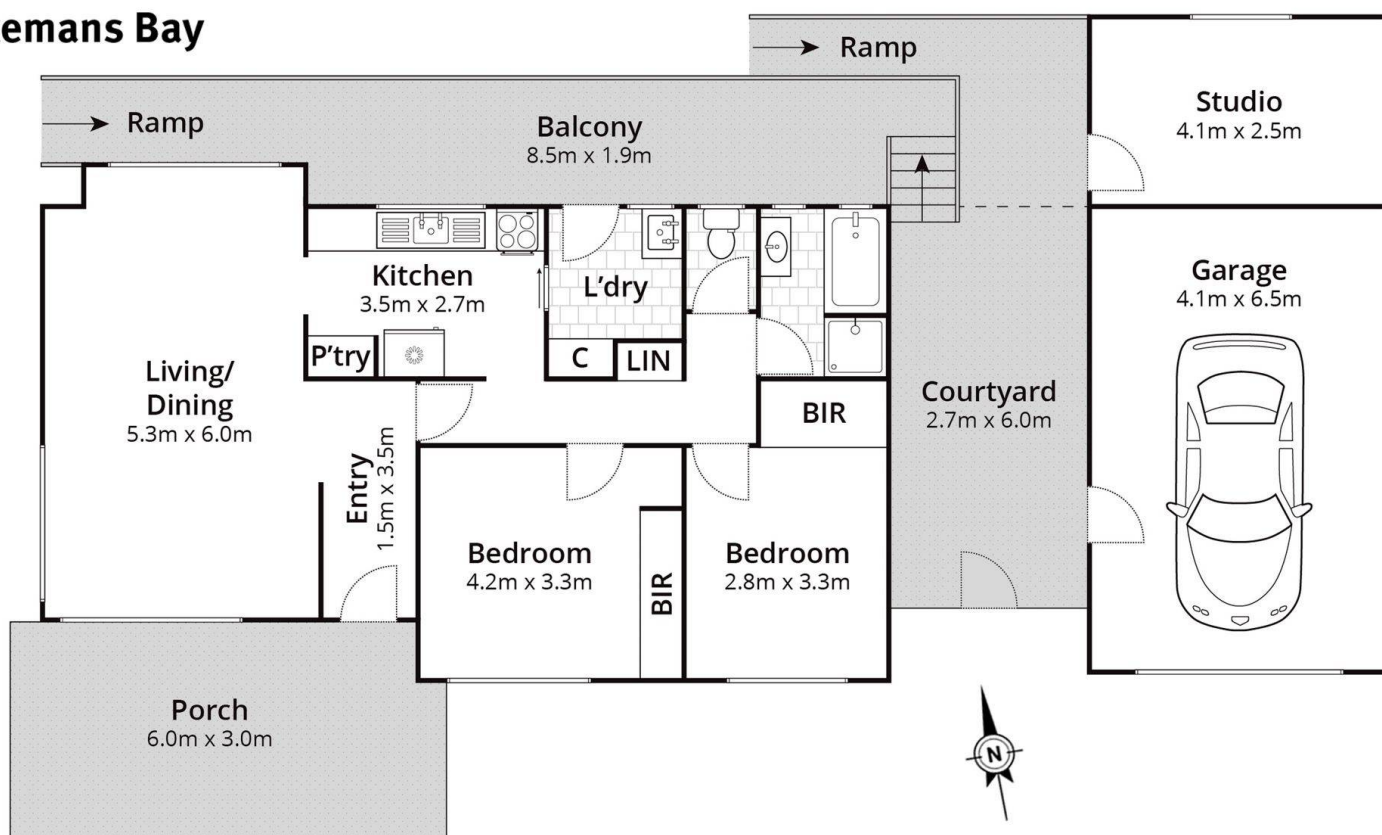






16 Murray Street, Moruya

Batemans Bay



Approx House Area 75m²

Whilst every effort has been made to ensure the accuracy of the floor plan depicted here, measurements are approximate and no responsibility is taken for any error, omission, or mis statement. This plan is for illustrative purposes only.

