

9/54 Beach Road, BATEMANS BAY, NSW 2536

Private Ground Floor Living Moments from Town

Perfectly positioned just a short waterfront stroll to town, this private ground-floor unit offers the ideal blend of convenience, comfort, and lifestyle. Located at the rear of the complex, the property enjoys a peaceful setting away from road noise - a rare advantage in such a sought-after central location where new developments continue to emerge.

Designed for easy living, the unit features a practical galley-style kitchen, tiled low-maintenance flooring, and painted internal brickwork throughout, creating a distinctive coastal feel. The combined bathroom and laundry maximises functionality, while the ground-floor position means there are no stairs to navigate, making it an excellent option for retirees, holidaymakers, or anyone seeking relaxed coastal living.

A covered car space is another valuable bonus, especially as many units in the area do not offer protected parking.

Residents can also enjoy fantastic resort-style facilities including a swimming pool, tennis court, and communal BBQ area - perfect for entertaining family and friends or simply unwinding after a day by the water.

TYPE: Auction

INTERNET ID: 121P4656

AUCTION DETAILS

11:30am, Saturday June 27th, 2026

CONTACT DETAILS

,

Rebecca Shephard
0413 580 309

Whether you are searching for a holiday getaway, investment opportunity, or easy-care home close to town, this well-positioned unit delivers lifestyle and location in perfect balance.

DISCLAIMER: The information contained in the advertising of this property is based on information provided to the agents, and the vendor and agents expressly disclaim any liability arising therefrom. The accuracy of the information cannot be guaranteed, and prospective purchasers should make their own enquiries and form their own judgement as to these matters.

- Building Area: 53.00 square metres
- Bedrooms: 2
- Bathrooms: 1
- Car Parks: 1

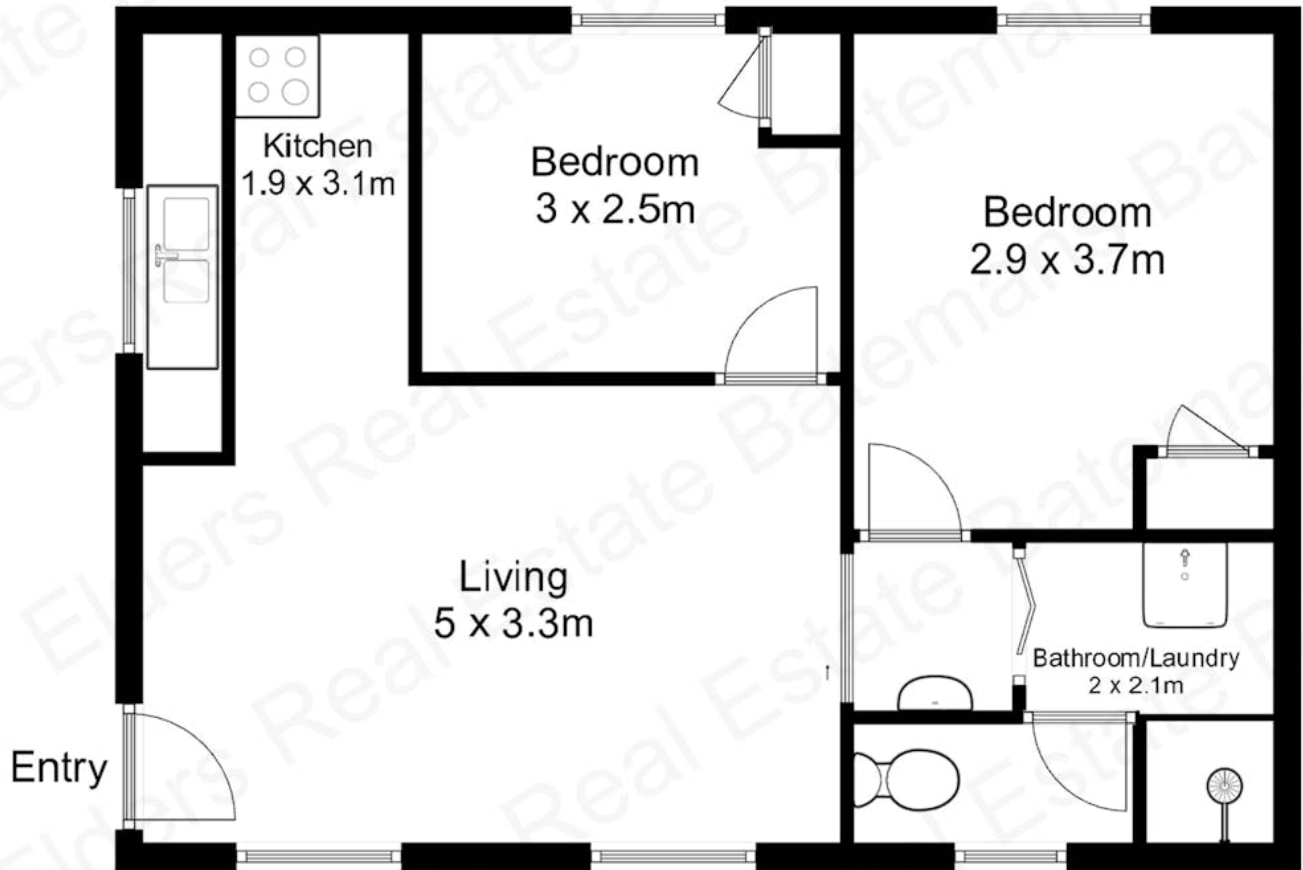








Approximate floor area
53 square metres
Property includes single
undercover car space



All measurements and boundaries are approximate and are intended as a guide only

