

27 Fauna Avenue, LONG BEACH, NSW 2536

Your Coastal Escape Awaits...

Perfectly positioned in the peaceful coastal enclave of Long Beach, 27 Fauna Avenue offers the ideal blend of relaxed seaside living and practical family design. This beautifully presented home is more than just a property - it's a lifestyle investment that captures the essence of the South Coast.

At the centre of the home, the well-appointed kitchen features a dishwasher, abundant cupboard storage, a breakfast bar, and a seamless flow into an open-plan living area. This light-filled space extends directly onto a spacious deck, where ocean water views create the perfect backdrop for quiet mornings or entertaining guests. The connected entertainment area ensures indoor-outdoor living is as effortless as it is enjoyable.

The master bedroom is a true parents' retreat, complete with a walk-in wardrobe and a private ensuite. An additional separate toilet upstairs adds everyday convenience.

Downstairs reveals a second living area - ideal as a rumpus, media room, or teenagers' retreat - alongside three well-sized bedrooms, all with built-in wardrobes, and one thoughtfully fitted with a ceiling fan. The main bathroom is also located on this level and boasts a generous layout, providing plenty of space for family or guests.

TYPE: For Sale

INTERNET ID: 121P4717

SALE DETAILS

\$1,290,000

CONTACT DETAILS

,

Rebecca Shephard
0413 580 309

Step outside and you'll find even more to love. A double garage provides secure parking and extra storage space, while the landscaped backyard sets the scene for relaxing weekends at home. Fire up the built-in woodfire and pizza oven, enjoy a meal in the BBQ area, or head straight through your private back gate to the nearby beach path - your very own shortcut to the sand and surf.

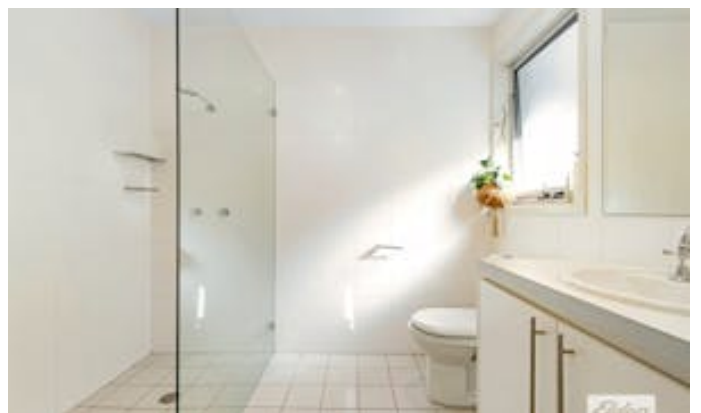
Whether you're looking for a permanent coastal residence, a family holiday home, or a smart investment, 27 Fauna Avenue delivers on all fronts. This is your chance to secure a slice of Long Beach paradise.

DISCLAIMER: The information contained in the advertising of this property is based on information provided to the agents, and the vendor and agents expressly disclaim any liability arising therefrom. The accuracy of the information cannot be guaranteed, and prospective purchasers should make their own enquiries and form their own judgement as to these matters.

Other features: Bush Retreat

- Land Area 745.00 square metres
- Building Area: 207.00 square metres
- Bedrooms: 4
- Bathrooms: 2
- Double garage



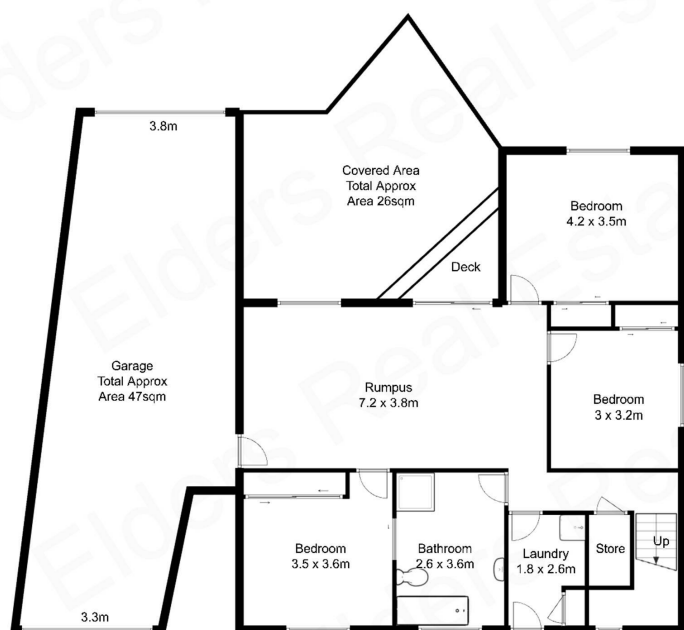




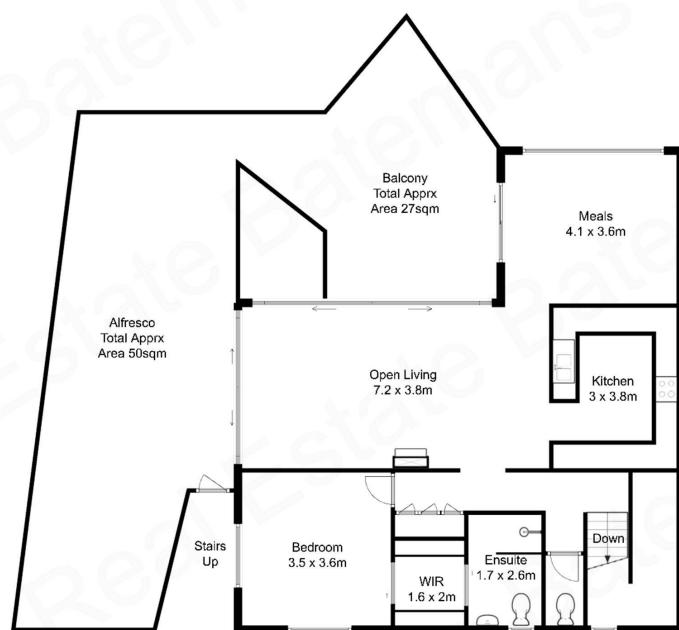




Approximate floor area
331 square metres
Block Size: 746 square metres



Ground Level



Upper Level



All measurements are approximate and are intended as a guide only



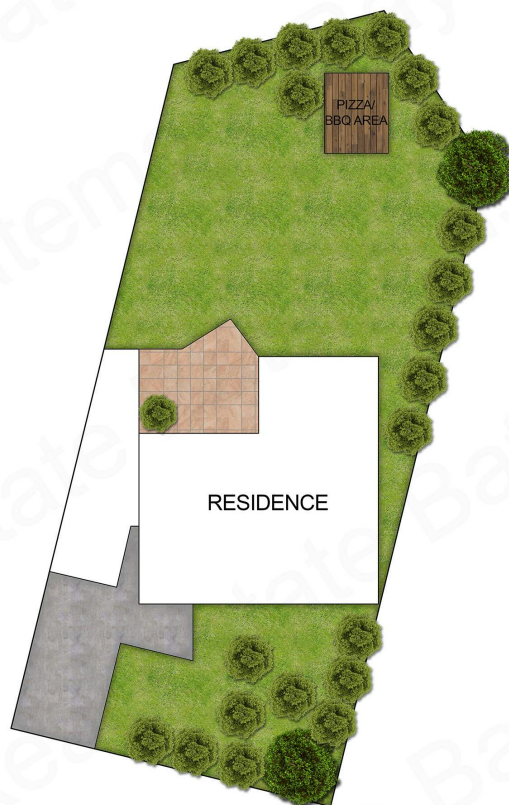
Approximate floor area
331 square metres
Block Size: 746 square metres



GROUND LEVEL



UPPER LEVEL



SITE PLAN

All measurements are approximate and are intended as a guide only