



13/2A Bellmount Close, ANNA BAY, NSW 2316

SWEEPING VIEWS & SUNSET SERENITY

Perched high at the top of a peaceful estate, this unique, light-filled home enjoys sweeping, uninterrupted views over Anna Bay. Sunsets here are nothing short of spectacular, making the upper-level living spaces feel like the best seat in town. Designed for relaxed coastal living, this split-level home blends space, comfort and low-maintenance appeal, with the flexibility to live entirely on one level.

Key features:

Four bedrooms, two bathrooms and dual living areas

Open-plan kitchen, living and dining flowing to a covered entertaining deck

Split-system air-conditioning in the master bedroom and main living, plus ceiling fans throughout

Plantation shutters, solar power and an updated butler's pantry/laundry with excellent storage

Double lock-up garage and access to residents-only pool and entertaining facilities

TYPE: For Sale

INTERNET ID: 124P2286

SALE DETAILS

\$875,000-\$925,000

CONTACT DETAILS

Adam Wells
0422 147 167

Set on an easy-care approximate 389m² block and just minutes from schools, shops, Birubi Beach and pristine national parklands, this home offers an enviable combination of lifestyle and convenience. Whether you're seeking a family retreat, a smart investment or a low-maintenance coastal base to downsize into, this property delivers space, style and unforgettable views. Opportunities like this are rare - secure your slice of Anna Bay today.

Elders Advantage Group have obtained this property information from sources we believe to be reliable; however, we cannot guarantee its accuracy. Prospective buyers are advised to carry out their own investigations.

Other features: Area Views, Car Parking - Surface, Carpeted, City Views, Close to Schools, Close to Shops

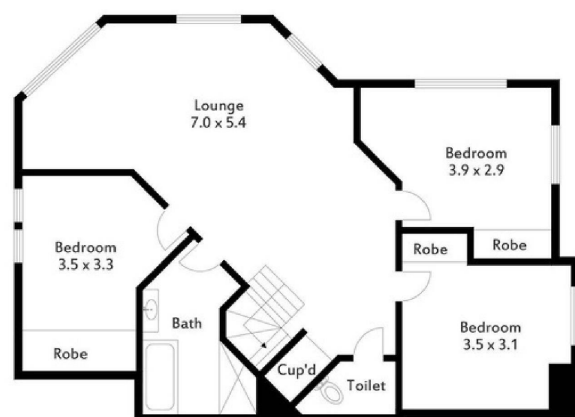
- Land Area 389.00 square metres
- Bedrooms: 4
- Bathrooms: 2
- Double garage
- Ensuite
- Floorboards



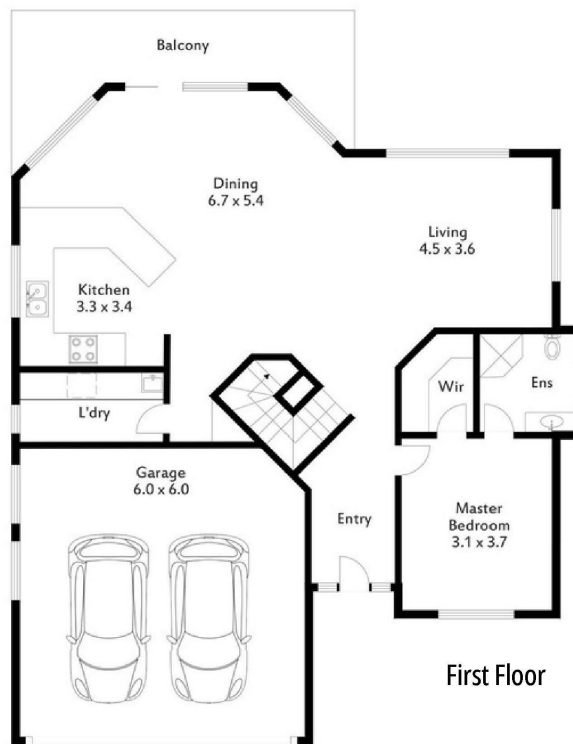




13/2A Bellmount Close, Anna Bay



Ground Floor



First Floor

Whilst every attempt has been made to ensure the accuracy of the floor plan contained here, measurements of doors, windows, rooms and any other item are approximate in metres and no responsibility is taken for any error, omission, or misstatement. This plan is for illustrative purposes only and should only be used as such by any prospective purchaser.



Advantage Group