



8 Carter Street, NORTH ROTHBURY, NSW 2335

Modern Family Home with Space & Style

Positioned in a quiet, family-friendly street, 8 Carter Street, North Rothbury offers contemporary comfort, generous space, and outstanding convenience. Designed for modern family living, this well-appointed home features multiple living zones, quality finishes throughout, and easy access to key amenities, making it an ideal choice for families, professionals, or investors alike.

Key Features

- Four spacious bedrooms with carpet flooring
- Master bedroom with walk-in robe and private ensuite
- Built-in wardrobes to all remaining bedrooms
- Two modern bathrooms
- Two living areas plus a separate media room
- Light-filled open-plan living and dining area
- Stylish modern kitchen with high-quality finishes

TYPE: For Sale

INTERNET ID: 124P2510

SALE DETAILS

PREVIEW

CONTACT DETAILS

Advantage Group – Hunter Valley

Shop 8, Thornton Shopping Centre

Thornton, NSW
(02) 4964 1862

Garry Fairhurst
0414 486 103

The particulars contained herein are supplied for information only and shall not be taken as a representation in any respect on the part of the vendor or its agent. Interested parties should contact the nominated person or office for full and current details.

Tiled flooring throughout main living spaces

Ducted reverse-cycle air conditioning for year-round comfort

Double lock-up garage with internal access

Low-maintenance, modern design ideal for family living

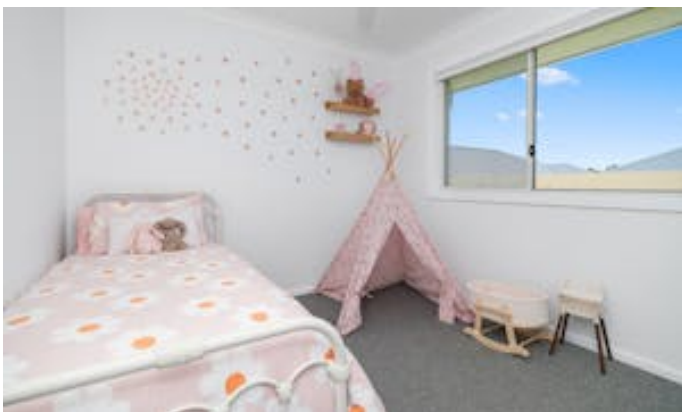
Location & Lifestyle

Set in the heart of North Rothbury, this home enjoys excellent proximity to everyday essentials. The Huntlee Town Centre is just minutes away, offering supermarkets, caf  s, medical facilities, and specialty stores. Families will appreciate nearby schools, parks, and recreational spaces, while public transport options are also close by.

Commuters will love the convenience of being approximately 2  5 minutes from the Hunter Expressway, providing seamless access to Newcastle (around 40  45 minutes) and easy connections to the M1 Pacific Motorway toward Sydney and the Central Coast.

Other features: Carpeted

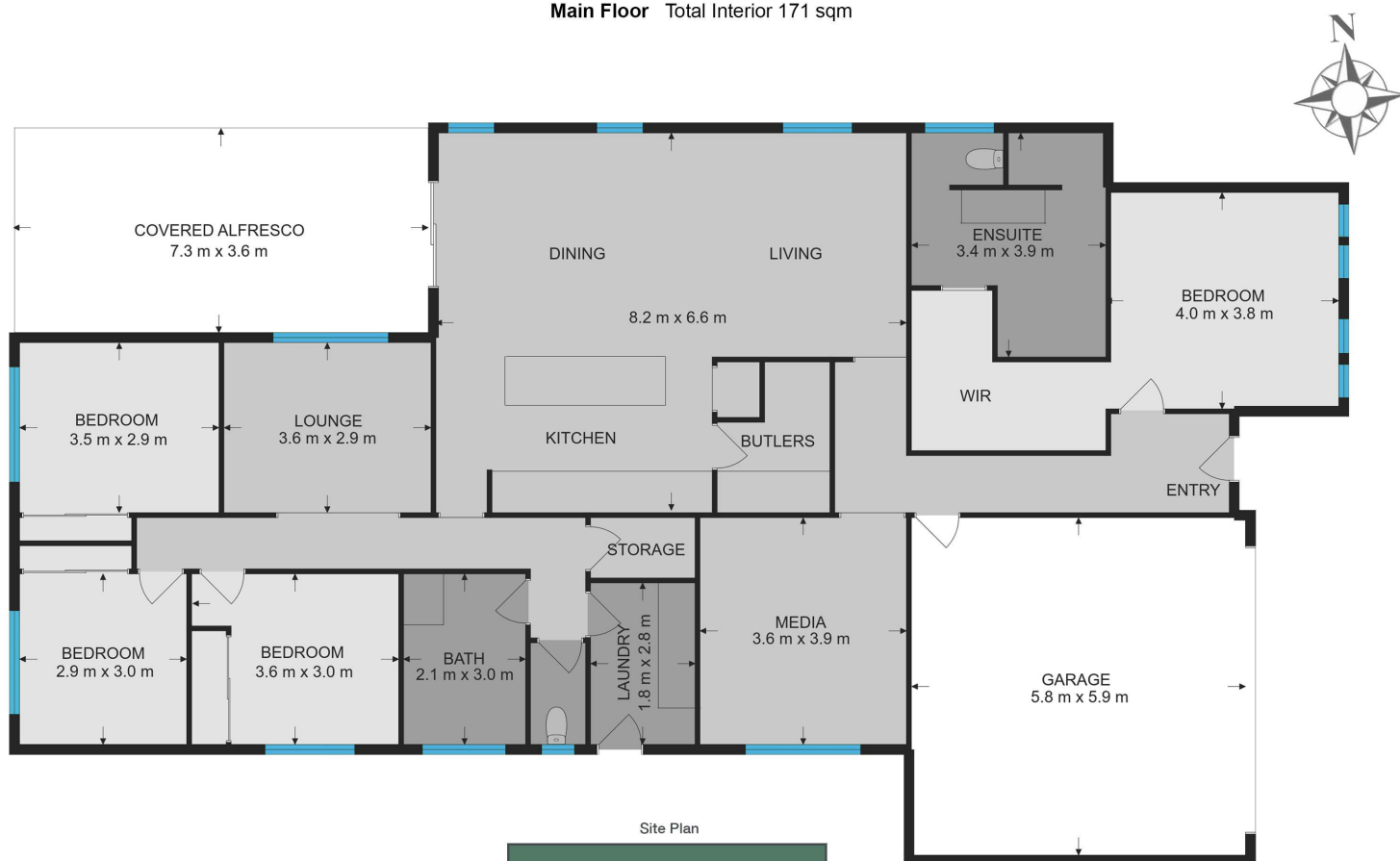
- Land Area 576.00 square metres
- Bedrooms: 4
- Bathrooms: 2
- Double garage
- Ensuite





8 Carter Street North Rothbury

Main Floor Total Interior 171 sqm



Advantage Group

Measurements are approximate and are to be used only as a guide