

9 Brigantine Street, RUTHERFORD, NSW 2320

Comfortable Living in a Convenient Location

This well-presented 3-bedroom home offers a comfortable and practical lifestyle in a convenient, family-friendly location. With a functional layout and a peaceful reserve outlook, it's an excellent option for those seeking easy living with everyday convenience.

Property Features:

- Three well-sized bedrooms, two with ceiling fans and the main featuring a built-in wardrobe
- Light-filled lounge room complete with split system air conditioning and ceiling fan
- Functional kitchen with electric cooktop and wall oven
- Three-way bathroom with separate bath and shower for added convenience
- Internal laundry with direct external access
- Double bay garage providing secure parking and extra storage space
- Generous rear yard backs onto a reserve, offering a pleasant outdoor outlook

The particulars contained herein are supplied for information only and shall not be taken as a representation in any respect on the part of the vendor or its agent. Interested parties should contact the nominated person or office for full and current details.

TYPE: For Sale

INTERNET ID: 124P2636

SALE DETAILS

PREVIEW

CONTACT DETAILS

Advantage Group – Hunter Valley

Shop 8, Thornton Shopping Centre

Thornton, NSW
(02) 4964 1862

Garry Fairhurst
0414 486 103

Location Highlights:

- Approx. 6 minutes to Maitland CBD for shopping, dining, and essential services
- Around 12 minutes to Stockland Green Hills for major retail and entertainment options
- Close to local schools and sporting facilities
- Easy access to surrounding suburbs and main transport routes
- Approx. 40 minutes to Newcastle CBD

Enjoy comfortable living in a well-connected location with everything you need close by. This is a great opportunity to secure a quality home in Rutherford.

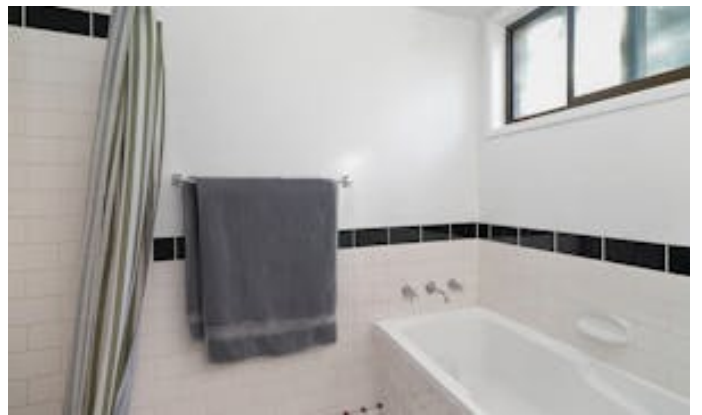
Enquire today to arrange a viewing â## this one won't last long!

Leased end on the 15/03/2027

Rent per week \$600.00

Other features: Close to Schools, Close to Shops, Close to Transport

- Land Area 603.00 square metres
- Bedrooms: 3
- Bathrooms: 1
- Double garage

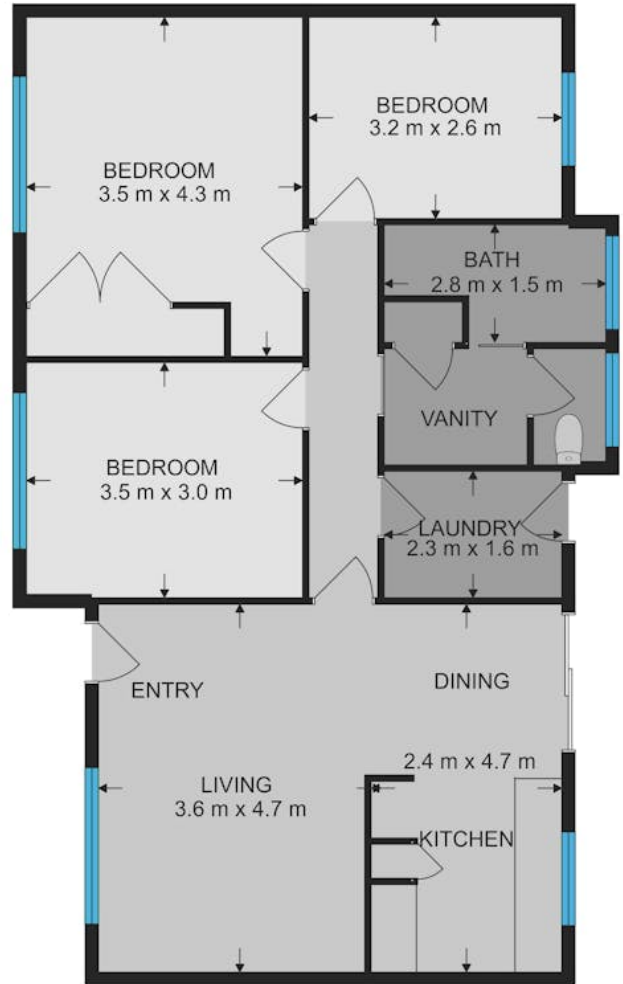
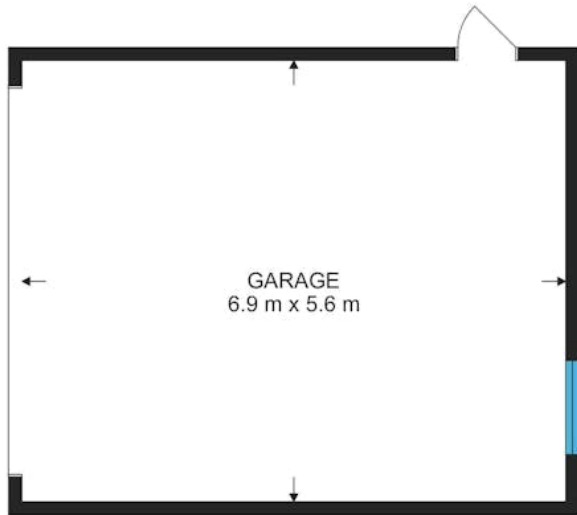




9 Brigantine Street Rutherford

Main Floor Total Interior 77 sqm

Site Plan



Advantage Group

Measurements are approximate and are to be used only as a guide