



## 26/8 Steam Street, MAITLAND, NSW 2320

### Low-Maintenance Living in a Prime Lifestyle Location

Offering comfort, convenience, and a highly desirable lifestyle, this well-presented two-bedroom, two-bathroom apartment is an excellent opportunity for first-home buyers, downsizers, and investors alike.

Designed for easy living, the apartment features a light-filled open-plan layout that flows onto a private balcony with a peaceful leafy outlook. The master bedroom includes an ensuite and built-in wardrobe, while the second bedroom is serviced by a modern main bathroom. A secure car space with remote access adds further practicality.

Positioned within walking distance of Maitland Train Station, local schools, caf  s, shops, and the popular The Levee precinct, you'll enjoy the best of Maitland's dining, entertainment, and riverside lifestyle. Green Hills Shopping Centre and the New Maitland Hospital are also just a short drive away.

#### Property Features:

Two bedrooms with built-in wardrobes

Main bedroom with ensuite

The particulars contained herein are supplied for information only and shall not be taken as a representation in any respect on the part of the vendor or its agent. Interested parties should contact the nominated person or office for full and current details.

**TYPE:** For Sale

**INTERNET ID:** 124P2659

#### CONTACT DETAILS

**Advantage Group – Hunter Valley**

Shop 8, Thornton Shopping Centre  
Thornton, NSW  
(02) 4964 1862

**Garry Fairhurst**  
0414 486 103

Open-plan living and dining area

Private balcony with leafy outlook

Modern kitchen with ample storage

Secure car space with remote access

Light-filled interiors

Low-maintenance apartment living

Walk to The Levee, train station, caf  s, shops, and schools

Minutes to Green Hills Shopping Centre and New Maitland Hospital

Ideal first home or investment opportunity

Other features: Car Parking - Basement, Close to Schools, Close to Shops, Close to Transport, Security Access

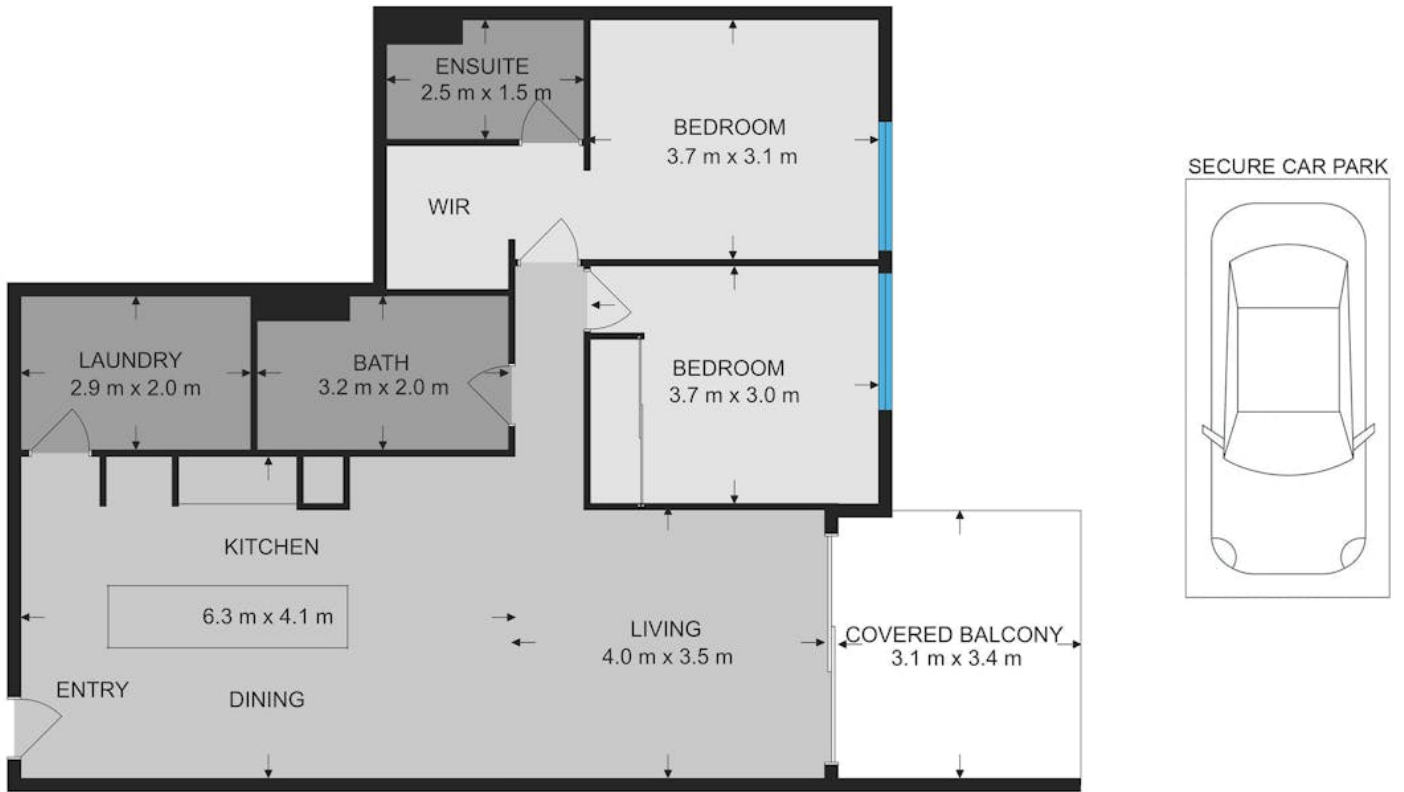
- Bedrooms: 2
- Bathrooms: 2
- Single garage
- Ensuite





### 26/8 Steam Street Maitland

Main Floor Total Interior 84 sqm



Advantage Group

Measurements are approximate and are to be used only as a guide