

11 Rapid Street, AINTREE, VIC 3336

Quality, Charm and Size & location !!

Gary from Elders Wyndham City exclusively presents, an approach to design and construction that placed the highest priority on quality the impetus behind the creation of this landmark home is a a refined, relaxed residence .

Cleverly designed, this superbly appointed property is the perfect fusion of low-maintenance living in a great location .

Conveniently located and positioned within walking distance from Woodlea's Bacchus Marsh Grammar School , Aintree Primary School and new shopping centre, Close proximity to Rockbank Train Station, Taylors Road and walking distance from parks and tracks which makes it a superb location.

Upon entry you have a master bedroom with a huge ensuite and a WIR, further down the wide hallway are 2 more bedrooms serviced by a centrally located bathroom and a separate toilet.

Key Features :

TYPE: Sold

INTERNET ID: 12P0474

SALE DETAILS

\$675,000

CONTACT DETAILS

Wyndham City

Level 1, 4 Wedge Street
South

WERRIBEE, VIC

03 8400 0008

Gary Joshi

0410 947 568

Master with ensuite and a walk in robe

3 Bedrooms with glass glazed built in robes

Spacious kitchen with a 40 mm stone bench tops and equipped with a great sized walk in pantry.

Quality floorboards and carpets all throughout the house.

High end wood finish remote controlled double garage.

Landscaped low maintenance front and backyards.

Ducted Heating and evaporative cooling to keep you pleasant all through the year.

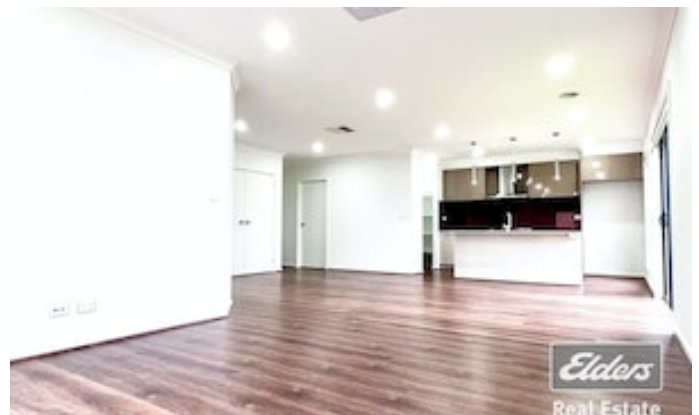
LED down lights all across

900 mm stainless steel appliances

Call the Gary on 0410947568 to book and inspection TODAY !

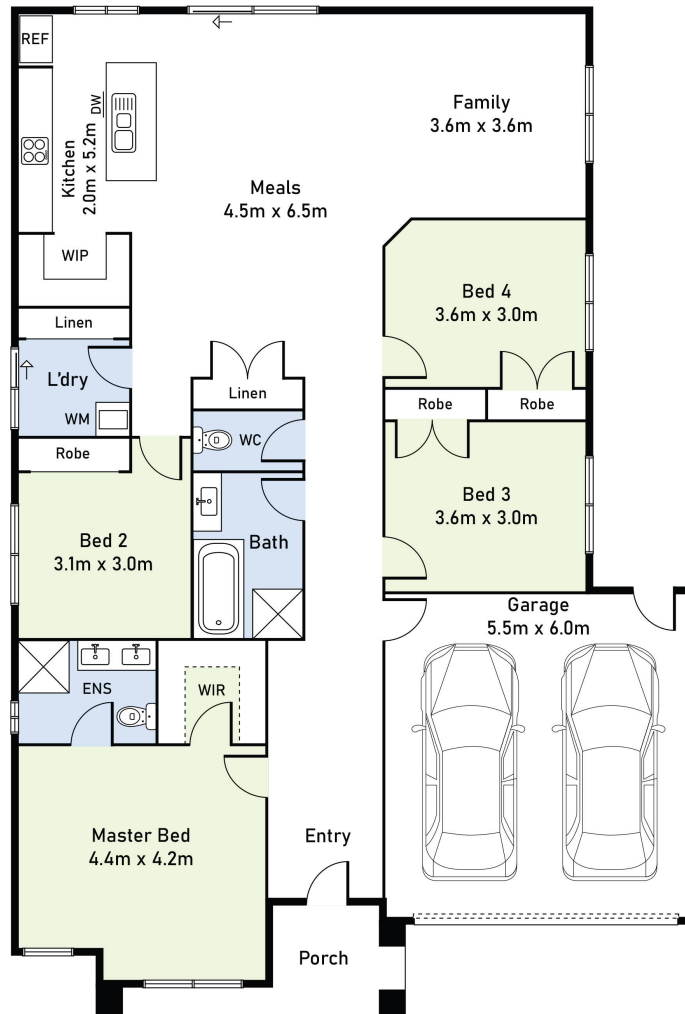
Disclaimer: We have in preparing this document used our best endeavours to ensure that the information contained in this document is true and accurate, but accept no responsibility and disclaim all liability in respect to any errors, omissions, inaccuracies or misstatements in this document. Prospective purchasers should make their own enquiries to verify the information contained in this document. Purchasers should make their own enquiries and refer to the due diligence check-list provided by Consumer Affairs. Click on the link for a copy of the due diligence check-list from Consumer Affairs. <http://www.consumer.vic.gov.au/duediligencechecklist>

- Land Area 350.00 square metres
- Bedrooms: 4
- Bathrooms: 2
- Double garage





11 Rapid Street, Aintree



Disclaimer: Floor Plan measurements are approximate and are for illustrative purposes only.

