



## 27 Willandra Boulevard, HARKNESS, VIC 3337

### Perfectly Positioned Family Home!

Elders Wyndham City Exclusively Presents 27 Willandra Boulevard, Harkness

Discover this beautiful family home located in the rapidly growing and highly desirable Willandra Estate. This spacious and immaculately presented home is perfect for families, first-home buyers, or investors seeking strong future growth and lifestyle convenience.

Featuring 4 well-appointed bedrooms with built-in robes, including a master suite complete with walk-in robe and full ensuite, this home provides generous space and comfort throughout. Multiple living zones include a light-filled meals area and two separate living spaces - ideal for relaxation and entertaining.

At the heart of the home is a modern, stylish kitchen equipped with:

Stone benchtops

Stainless steel appliances

**TYPE:** For Rent

**INTERNET ID:** 12P1003

#### RENTAL DETAILS

**Rent / Lease:**

**\$520 pw**

#### CONTACT DETAILS

**Wyndham City**

Level 1, 4 Wedge Street  
South

WERRIBEE, VIC

03 8400 0008

**Ashima Kaloti**

0493 547 300

600mm under-bench oven

900mm gas cooktop

Canopy rangehood

Solar Panels

Walk-in pantry

Additional highlights include a double garage, under-roofline portico, neat low-maintenance gardens, and a fantastic corner block of approx. 493m<sup>2</sup>, positioned just metres from landscaped parklands.

Lifestyle & Convenience in Harkness / Willandra Estate

Schools:

Harkness Primary School

Bacchus Marsh College (Junior & Senior campuses)

Local childcare and kindergarten options within Willandra Estate

Shopping & Services:

Bacchus Marsh Village Shopping Centre (Coles, Woolworths, specialty shops)

Bacchus Marsh Medical Centre & local healthcare services

Easy access to local caf  s, restaurants, and community facilities

Recreation & Lifestyle:

Walking distance to landscaped parklands and reserves within Willandra Estate

Close to the Werribee River corridor and recreational trails

Family-friendly parks, playgrounds, and sporting facilities emerging as the estate grows

Why 27 Willandra Boulevard?

Prime location in a fast-growing, high-demand family-friendly community

Modern infrastructure and newly developed amenities

Excellent connectivity via Bacchus Marsh Road and Melton Highway

Surrounded by nature, parks, and open space

Strong rental demand and promising investment potential

This beautiful home is not to be missed! Whether you're buying your first home, looking to upgrade, or seeking a solid investment opportunity, this property ticks all the right boxes.

For Inspections or further details please contact Contact Ashima Kaloti

0493 547 300 Or Sunaina Puri 0493 965 430

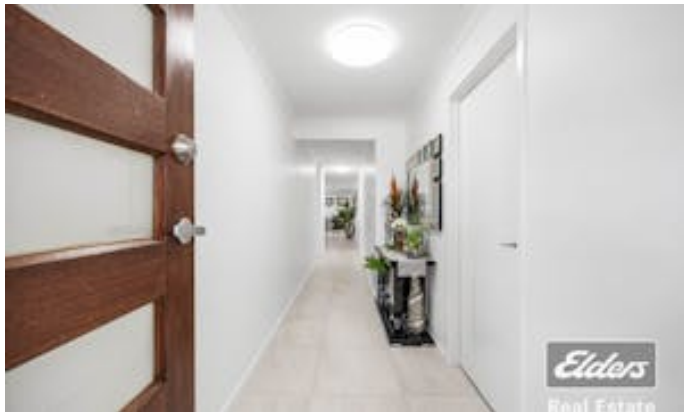
Due diligence checklist

Please see the below link for an up-to-date copy of the Due Diligence Checklist:  
<http://www.consumer.vic.gov.au/duediligence>

DISCLAIMER: Landscaping photos are for illustration purpose only. All stated dimensions are approximate only. Particulars given are for general information only and do not constitute any representation on the part of the vendor or agent. This document has been prepared to assist solely in the marketing of this property. While all care has been taken to ensure the information provided herein is correct, we do not take responsibility for any inaccuracies. Accordingly, all interested parties should make their own inquiries to verify the information.

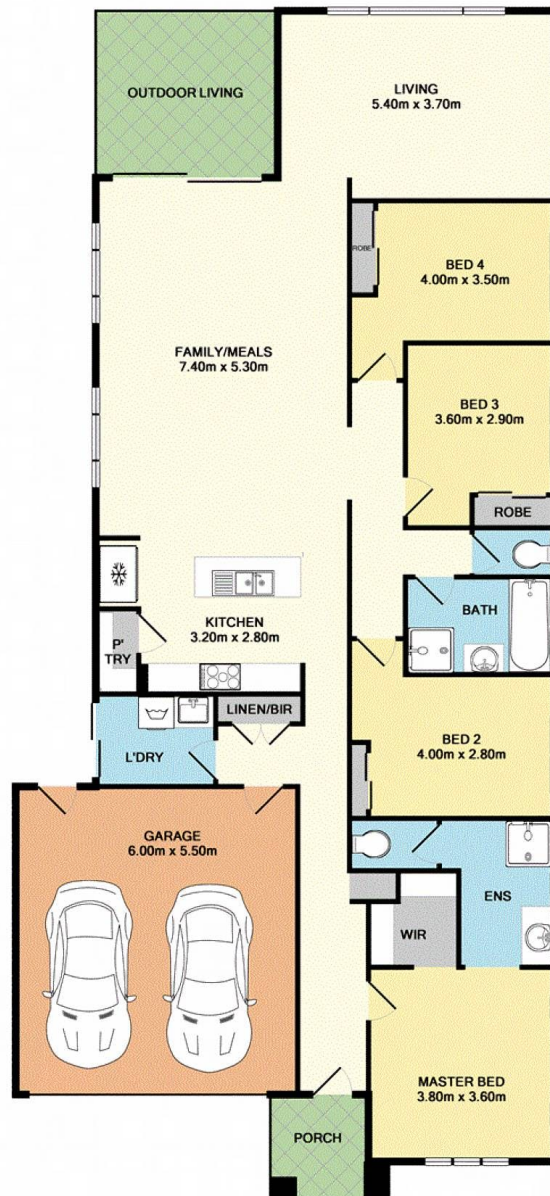
Note: Photos are used for illustration purpose only..

- This property is: Unfurnished
- Pets: No
- Available on: 27/01/26
- Land Area 493.00 square metres
- Bedrooms: 4
- Bathrooms: 2
- Double garage









Whilst every attempt has been made to ensure the accuracy of the floor plan contained here, measurements of doors, windows, rooms and any other items are approximate and no responsibility is taken for any error, omission, or mis-statement. This plan is for illustrative purposes only and should be used as such by any prospective purchaser. The services, systems and appliances shown have not been tested and no guarantee as to their operability or efficiency can be given.  
Made with Metropix ©2018