



6 Janaki Street, WERRIBEE, VIC 3030

Brand New Luxury with Space for the Whole Family to Grow !!

Directions to 6 Janaki Street, Werribee

Please see the added image for detailed directions.

1. From the Princes Freeway (M1), take the Werribee exit.
2. Continue onto Princes Highway, then turn into Farm Road to enter Riverwalk Estate.
3. Follow Farm Road through the estate and continue past Newmarket Road.
4. Turn left onto Danshill Avenue.
5. Turn right onto Kuvera Street.
6. Turn left onto Gambusia Road.
7. Continue straight and take the next left into Janaki Street.
8. 6 Janaki Street will be on your left.

TYPE: Sold

INTERNET ID: 12P1044

SALE DETAILS

\$750,000

CONTACT DETAILS

Wyndham City

Level 1, 4 Wedge Street

South

WERRIBEE, VIC

03 8400 0008

Mandeep Tyagi

0433 769 496

Elders Wyndham City presents this brand new residence in Riverwalk Estate, where strong design choices and quality finishes come together in a layout that works for modern family living.

Step inside to 2.7m high ceilings that immediately create a sense of space. The home offers four generously sized bedrooms, including a well appointed master suite with walk in robe and private ensuite. The ensuite is finished with floor to ceiling tiles, a double vanity with 60mm stone benchtops, and LED mirrors. The remaining bedrooms are positioned around a central bathroom, completed to the same high standard.

The heart of the home is the expansive open plan kitchen, dining and living zone. Designed for both everyday use and entertaining, the kitchen features 60mm stone benchtops with waterfall edges, stainless steel appliances, dishwasher, walk in pantry, and a full butler's pantry that adds valuable preparation and storage space. A feature TV wall enhances the main living area, while sheer curtains across the living and dining zones soften the natural light and add a refined finish.

Wainscoting feature walls in the hallway and living area introduce subtle architectural detail, elevating the overall presentation. Refrigerated heating and cooling ensures comfort throughout the year.

Outside, the front porch is completed with composite decking in a timber look finish, offering a clean street presence with minimal maintenance required.

Located in the heart of Riverwalk Estate, this home is approximately 0.2 km from Riverwalk Primary School and around 0.4 km from the Sports and Recreational Reserve. The Princes Freeway access point is within close proximity, providing direct connectivity towards Melbourne CBD. Nearby amenities include Werribee Town Centre, Werribee Zoo, Werribee Mansion, and the future Riverwalk Town Centre.

With quality finishes, considered design, and a well connected location, this property presents a complete lifestyle opportunity in one of Werribee's established and growing communities.

****PHOTO ID IS REQUIRED AT ALL OPEN FOR INSPECTIONS****

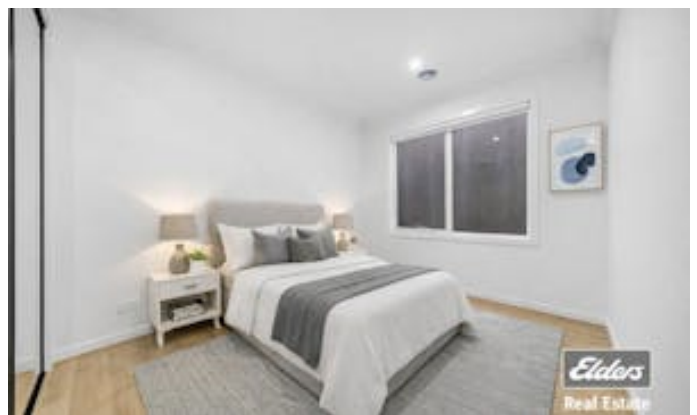
DISCLAIMER: All stated dimensions are approximate only. Given are for general information only and do not constitute any representation on the part of the vendor or agent.

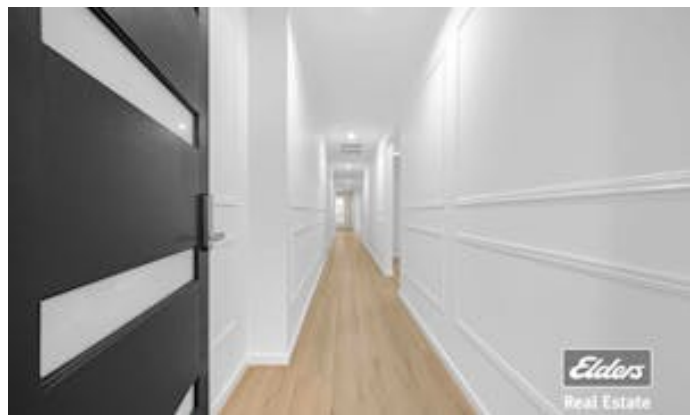
Images contain virtual staging.

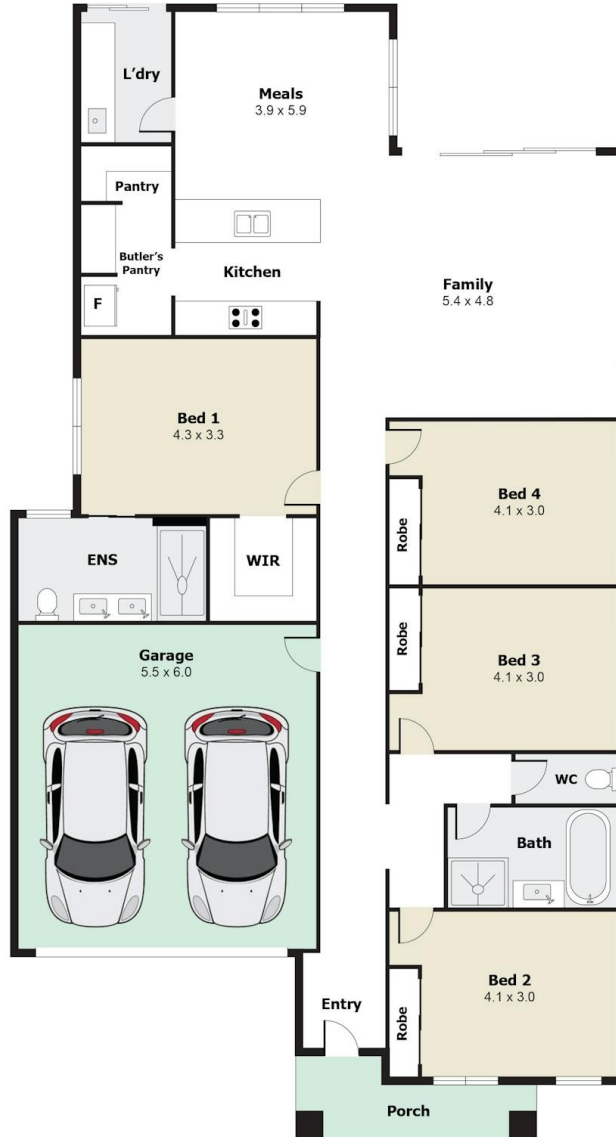
Please see the below link for an up-to-date copy of the Due Diligence Checklist:
<http://www.consumer.vic.gov.au/duediligence>

Other features: Close to Schools, Close to Shops, Close to Transport, Exhaust

- Land Area 313.00 square metres
- Bedrooms: 4
- Bathrooms: 2
- Double garage
- Ensuite







**6 JANAKI STREET,
WERRIBEE**

Measurements are approximate. Not to Scale. Illustrative purposes only.