

26 Eskdale Street, WERRIBEE, VIC 3030

Spacious Brand New Family Living on 423 sqm in Riverwalk Primary and Werribee Secondary Zones!!

Elders Wyndham City proudly presents this brand new residence set on approximately 423 sqm of land, offering a well considered layout, quality finishes, and everyday functionality in one of Werribee's well established and continuously developing locations, zoned for Riverwalk Primary School and Werribee Secondary College.

Designed with practicality in mind, the home offers four spacious bedrooms, three bathrooms, and a double garage, providing flexibility for growing families or those needing additional space. The interior has been planned to allow natural light to flow through the open plan living and dining area, creating a comfortable setting that connects seamlessly to the central kitchen.

The kitchen forms the heart of the home and is fitted with stone benchtops, quality appliances, and streamlined cabinetry, delivering both style and practicality for everyday cooking and entertaining. The main bedroom is positioned to offer privacy and includes an ensuite and walk in robe, while the remaining bedrooms are supported by well finished bathrooms featuring modern fittings and functional layouts.

TYPE: For Sale
INTERNET ID: 12P1045

CONTACT DETAILS

Wyndham City
Level 1, 4 Wedge Street
South
WERRIBEE, VIC
03 8400 0008

Mandeep Tyagi
0433 769 496

Externally, the property showcases low maintenance landscaping and a clean, contemporary facade that complements the overall design. The double remote garage provides internal access, adding convenience and security for daily use. Overall, the home presents a balanced combination of space, functionality, and modern finishes suited to comfortable family living.

Perfectly positioned in the heart of Riverwalk Estate, this home is within a short two-minute walk to Riverwalk Primary School and a five-minute stroll to the Sports and Recreation Reserve. The Princes Freeway entry is only two minutes away, offering easy access to Melbourne CBD. Werribee Town Centre, Werribee Open Range Zoo, Werribee Mansion, and the upcoming Riverwalk Town Centre are all close by.

This home delivers the lifestyle you've been waiting for-brand-new, stylish, and ready to move in.

Don't miss out on this rare opportunity! Contact Mandeep Tyagi at 0433 769 496 or Amol Pancholi at 0414 036 300 for further details.

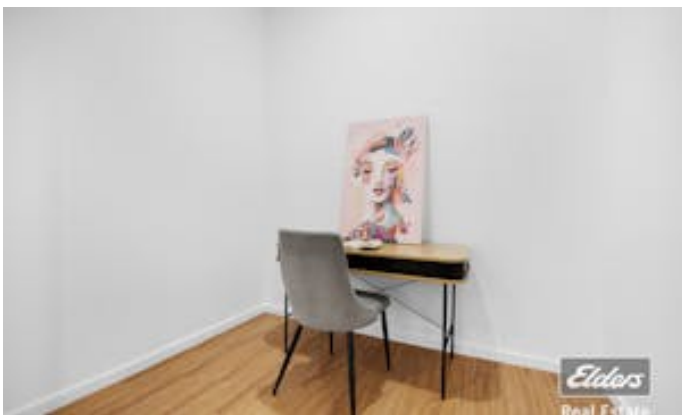
For home and residential property buyers, please refer to the due diligence checklist provided at <http://www.consumer.vic.gov.au/duediligencechecklist>.

Disclaimer: This document has been prepared solely to assist in the marketing of this property. While all care has been taken to ensure the provided information is correct, we do not take responsibility for any inaccuracies. Accordingly, all interest.

Other features: Exhaust

- Land Area 423.00 square metres
- Bedrooms: 4
- Bathrooms: 3
- Double garage
- Ensuite











**26 ESKDALE STREET,
WERRIBEE**

Measurements are approximate. Not to Scale. Illustrative purposes only.

