

62 Trevor Crescent, TRUGANINA, VIC 3029

GRAND FAMILY HOME WITH SPACE, STYLE & FLEXIBILITY!

Elders Real Estate Wyndham City proudly presents this impressive and spacious double-storey home, designed to accommodate large or extended families with ease. Offering a well-thought-out layout, multiple living zones, and modern finishes, this residence delivers comfort, functionality, and lifestyle in one complete package.

Positioned in a growing and family-friendly pocket of Truganina, this home is ideal for those seeking generous space without compromising on convenience.

Property Features:

6 spacious bedrooms including a luxurious master with walk-in robe, ensuite & private balcony

Guest bedroom downstairs with its own ensuite - ideal for extended family or visitors

3 well-appointed bathrooms plus additional powder room

Dedicated study/home office for work or study needs

Multiple living areas including formal lounge, open-plan family/dining & upstairs retreat

The particulars contained herein are supplied for information only and shall not be taken as a representation in any respect on the part of the vendor or its agent. Interested parties should contact the nominated person or office for full and current details.

TYPE: For Rent

INTERNET ID: 12P1059

RENTAL DETAILS

Rent / Lease:

\$800 pw

CONTACT DETAILS

Wyndham City
Level 1, 4 Wedge Street
South
WERRIBEE, VIC
03 8400 0008

Amann S Jadaun
0410 158 156

Modern kitchen with stone benchtops, quality appliances & large walk-in pantry

Light-filled open-plan living flowing to covered outdoor entertaining area

Double remote garage with internal access and additional parking space

Comfort & Extras:

Ducted heating and zoned refrigerated cooling

Low-maintenance landscaped front and backyard

Functional floorplan suitable for large or multi-generational living

Quality build with modern fixtures and fittings throughout

Location Highlights:

Situated in a popular and fast-growing Truganina neighbourhood

Close to schools, childcare centres and local parks

Easy access to shopping centres, public transport & major roads

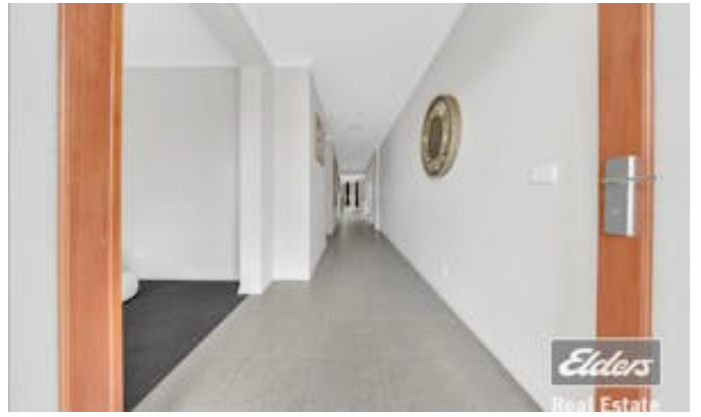
Convenient connectivity to surrounding suburbs and Melbourne CBD

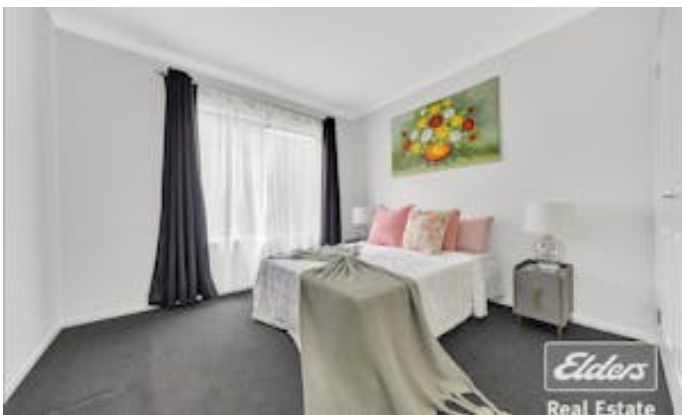
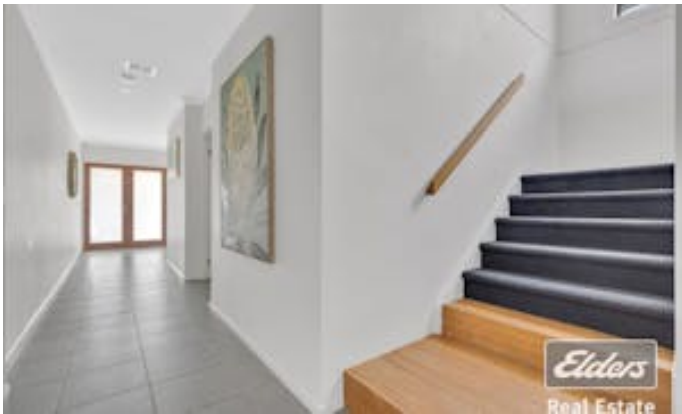
This is a rare opportunity to lease a large, well-designed home offering exceptional space and versatility in a prime location.

INSPECTIONS ARE SUBJECT TO CHANGE WITHOUT NOTIFICATION, PLEASE CHECK THE WEBSITE PRIOR TO ATTENDING THE INSPECTION

DISCLAIMER: Curtains/Blinds will be installed at the commencement of residential agreement. All stated dimensions are approximate only. Particulars given are for general information only and do not constitute any representation on the part of the vendor or agent. This document has been prepared to assist solely in the marketing of this property. While all care has been taken to ensure the information provided herein is correct, we do not take responsibility for any inaccuracies. Accordingly, all interested parties should make their own inquiries to verify the information.

- This property is: Unfurnished
- Pets: No
- Available on: 01/05/26
- Bedrooms: 6
- Bathrooms: 3
- Double garage







62 TREVOR CRESCENT, TRUGANINA



GROUND FLOOR

FIRST FLOOR



DISCLAIMER: THIS FLOOR PLAN IS A VISUAL GUIDE ONLY AND MAY CONTAIN INACCURACIES IN MEASUREMENTS, LAYOUT, ROOM NAMES OR FEATURES. NO WARRANTY IS GIVEN AS TO ITS ACCURACY. INTERESTED PARTIES MUST CONDUCT THEIR OWN DUE DILIGENCE.