



## 7 Gleam Street, WERRIBEE, VIC 3030

Brand new Contemporary Family Living in the Heart of Riverwalk !!

Directions to 7 Gleam Street Werribee

Please see the added image for detailed directions.

1. From the Princes Freeway (M1), take the Werribee exit.
2. Continue onto Princes Highway, then turn into Farm Road to enter Riverwalk Estate.
3. Follow Farm Road through the estate and continue past Newmarket Road.
4. Turn left onto Danshill Avenue.
5. Turn right onto Kuvera Street.
6. Turn left onto Gambusia Road.
7. Continue straight and take the next left into Gleam Street.
8. 7 Gleam Street Werribee will be on your left.

**TYPE:** For Sale

**INTERNET ID:** 12P1076

### CONTACT DETAILS

**Wyndham City**

Level 1, 4 Wedge Street  
South

WERRIBEE, VIC  
03 8400 0008

**Mandeep Tyagi**

0433 769 496

Elders Wyndham City proudly presents this beautifully finished brand-new four-bedroom home, thoughtfully designed for comfortable modern living with a practical floorplan, two living zones and quality finishes throughout.

From the moment you arrive, the landscaped front yard and modern facade create a welcoming first impression. Inside, the home offers light-filled interiors, neutral colour tones and a spacious open plan design that instantly feels warm and inviting.

The central kitchen is fitted with stone benchtops, quality appliances, ample storage, a sleek splashback and a well-appointed butler's pantry, all overlooking the main living and dining area. A second living zone provides added flexibility for growing families, whether used as a retreat, media room or additional entertaining space. Sliding doors connect seamlessly to the low maintenance backyard with landscaped surrounds and concrete pathways, creating an easy indoor-outdoor flow for everyday living and entertaining.

The master bedroom includes a walk-in robe and private ensuite, while the remaining bedrooms are fitted with built-in robes and serviced by a stylish central bathroom featuring a freestanding bathtub, separate toilet and contemporary finishes.

Additional highlights include reverse cycle refrigerated heating and cooling with zoning, high ceilings, feature lighting, stone benchtops throughout, landscaped front and rear gardens, and a remote controlled double garage with internal access.

Perfectly positioned in the heart of Riverwalk Estate, this home is within a short two-minute walk to Riverwalk Primary School and a five-minute stroll to the Sports and Recreation Reserve. The property is also zoned for Riverwalk Primary School and Werribee Secondary College. The Princes Freeway entry is only two minutes away, offering easy access to Melbourne CBD. Werribee Town Centre, Werribee Open Range Zoo, Werribee Mansion and the upcoming Riverwalk Town Centre are all close by.

This home delivers the lifestyle you've been waiting for, brand-new, stylish and ready to move in.

Don't miss out on this rare opportunity! Contact Mandeep Tyagi on 0433 769 496 or Amol Pancholi on 0414 036 300 for further details.

For home and residential property buyers, please refer to the due diligence checklist provided at <http://www.consumer.vic.gov.au/duediligencechecklist>.

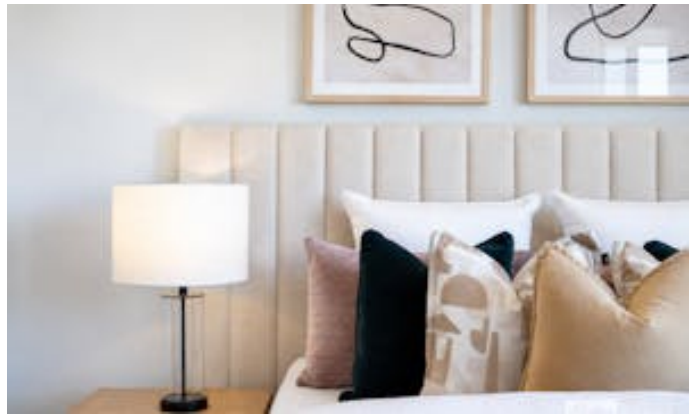
Disclaimer: This document has been prepared solely to assist in the marketing of this property. While all care has been taken to ensure the provided information is correct, we do not take responsibility for any inaccuracies. Accordingly, all interest.

Images shown include staging furniture for presentation purposes only and do not form part of the sale.

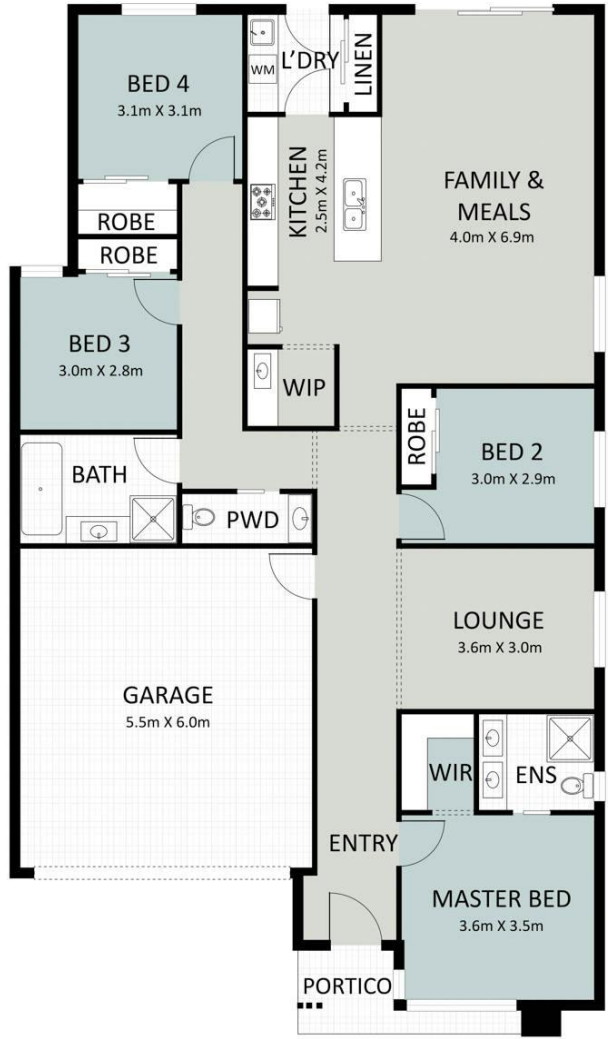
- Bedrooms: 4
- Bathrooms: 2
- Double garage











Plans are indicative only. Dimensions are approximate. All information contained herein is gathered from sources we believe to be reliable. However, we cannot guarantee its accuracy and interested parties should rely on their own enquiries.  
Lot 4359, Gleam Street, Werribee

