



5 Janaki Street, WERRIBEE, VIC 3030

Brand New Luxury with Space for the Whole Family to Grow !!

Directions to 5 Janaki Street, Werribee

Please see the added image for detailed directions.

1. From the Princes Freeway (M1), take the Werribee exit.
2. Continue onto Princes Highway, then turn into Farm Road to enter Riverwalk Estate.
3. Follow Farm Road through the estate and continue past Newmarket Road.
4. Turn left onto Danshill Avenue.
5. Turn right onto Kuvera Street.
6. Turn left onto Gambusia Road.
7. Continue straight and take the next left into Janaki Street.
8. 6 Janaki Street will be on your left.

TYPE: Sold

INTERNET ID: 12P1078

SALE DETAILS

\$750000

CONTACT DETAILS

Wyndham City

Level 1, 4 Wedge Street

South

WERRIBEE, VIC

03 8400 0008

Mandeep Tyagi

0433 769 496

Elders Wyndham City proudly presents this stunning, brand-new home in the sought-after Riverwalk Estate, Werribee. Designed with care and built to the highest standards, this property blends modern style with functional living, perfect for growing families or those seeking a refined lifestyle.

Step inside to discover high ceilings and premium flooring that flow throughout the home, creating a sense of space and continuity. Every detail has been thoughtfully finished to balance comfort and sophistication.

This residence features four spacious bedrooms, including two master suites, each with its own walk-in robe and a luxurious ensuite featuring floor-to-ceiling tiles, stone benchtops, LED mirrors, and sleek matte black tapware. The remaining bedrooms include built-in robes and are serviced by a stylish central bathroom with the same high-end finishes.

At the heart of the home lies the expansive open-plan kitchen, dining, and living zone, designed for both everyday living and entertaining. The kitchen showcases stone benchtops with waterfall edges, 900 mm stainless-steel appliances, a dishwasher, soft-close cabinetry, and a spacious walk-in pantry. The adjoining living area features a striking TV wall that adds warmth and character.

For year-round comfort, the home includes refrigerated heating and cooling. A garage with remote access and internal entry provides convenience and security.

Outside, you'll find a low-maintenance yard with artificial turf, full perimeter concreting, and complete fencing for privacy. The modern facade is highlighted by a timber front door, exposed aggregate driveway, and a downlight feature niche that enhances the street appeal. Premium finishes such as LED downlights, pendant lighting, and a built-in TV cabinet complete the elegant design inside.

Perfectly positioned in the heart of Riverwalk Estate, this home is within a short two-minute walk to Riverwalk Primary School and a five-minute stroll to the Sports and Recreation Reserve. The Princes Freeway entry is only two minutes away, offering easy access to Melbourne CBD. Werribee Town Centre, Werribee Open Range Zoo, Werribee Mansion, and the upcoming Riverwalk Town Centre are all close by.

This home delivers the lifestyle you've been waiting for-brand-new, stylish, and ready to move in.

Don't miss out on this rare opportunity! Contact Mandeep Tyagi at 0433 769 496 or Amol Pancholi at 0414 036 300 for further details.

For home and residential property buyers, please refer to the due diligence checklist provided at <http://www.consumer.vic.gov.au/duediligencechecklist>.

Images contain virtual staging.

Disclaimer: This document has been prepared solely to assist in the marketing of this property. While all care has been taken to ensure the provided information is correct, we do not take responsibility for any inaccuracies. Accordingly, all interest.

Other features: Close to Schools, Close to Shops, Close to Transport, Exhaust

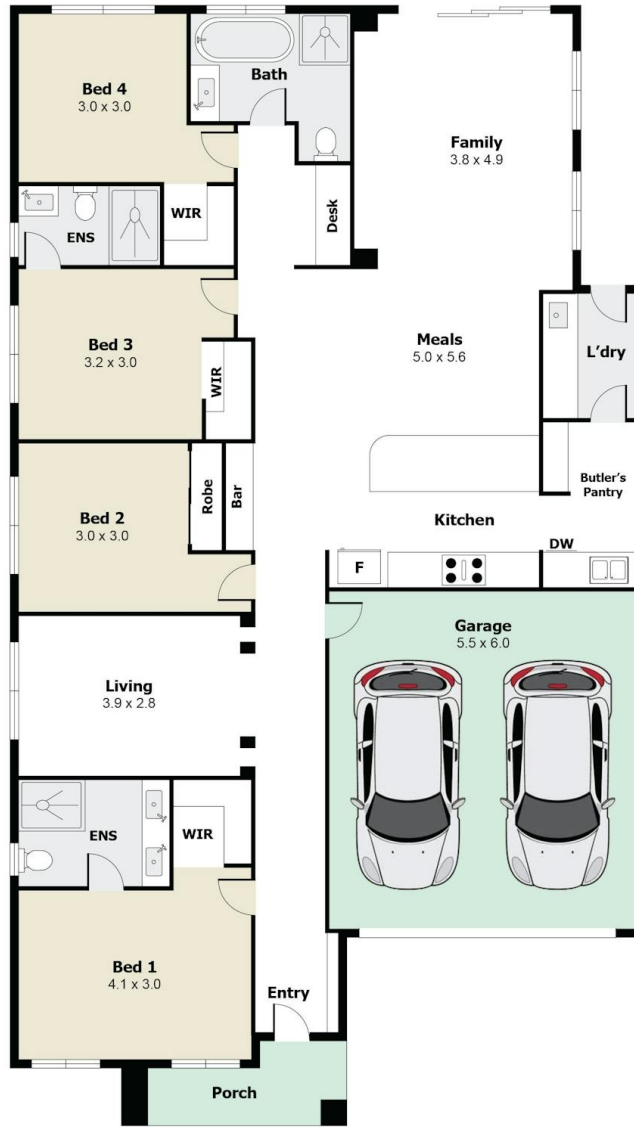
- Bedrooms: 4

The particulars contained herein are supplied for information only and shall not be taken as a representation in any respect on the part of the vendor or its agent. Interested parties should contact the nominated person or office for full and current details.

- Bathrooms: 3
- Double garage
- Ensuite







**5 JANAKI STREET,
WERRIBEE**



Measurements are approximate. Not to Scale. Illustrative purposes only.