

1555 Yarramalong Road, YARRAMALONG, NSW 2259

Embrace Country Living

Discover a truly exceptional lifestyle property in the heart of the picturesque Yarramalong Valley - offering approximately 10 acres of serene countryside living just moments from the charm of Yarramalong village.

Thoughtfully designed for comfort and functionality, this spacious five-bedroom family residence delivers relaxed rural elegance with modern convenience. The light-filled open-plan kitchen, living and dining domain forms the heart of the home, anchored by a stunning contemporary kitchen with abundant storage - ideal for family connection and effortless entertaining.

Multiple living zones provide flexibility for growing families, while the expansive undercover entertaining deck captures sweeping valley views and cooling afternoon breezes from its prized northerly aspect. Downstairs, a substantial entertaining terrace flows seamlessly to the sparkling in-ground pool - creating a private resort-style setting perfect for summer gatherings.

The land is a standout feature - beautifully undulating, mostly cleared and highly usable, stretching to a peaceful tree-lined creek. Known for some of the most fertile acres in the valley, the property is currently running Charolais cattle and offers

The particulars contained herein are supplied for information only and shall not be taken as a representation in any respect on the part of the vendor or its agent. Interested parties should contact the nominated person or office for full and current details.

TYPE: For Sale

INTERNET ID: 130P0114

SALE DETAILS

[Contact Agent](#)

CONTACT DETAILS

Elders Real Estate Coast and Country

133 Yarramalong Road
Wyong Creek, NSW
0417 400 556

Elders Real Estate Coast and Country

enormous versatility for hobby farming, equestrian pursuits or lifestyle enjoyment.

Additional highlights include:

- Ducted air conditioning throughout
- Slow combustion fireplace for cosy winter evenings
- Large undercover carport
- Excellent shedding for storage or hobbies
- Approximately 100,000L of underground water storage
- Existing concrete tennis court slab, offering scope to revitalise or repurpose
- Expansive outlooks across your own rolling acres

Positioned as one of the last RU5 Village-zoned holdings on the edge of the village, and dual zoned RU1 Primary Production, this is a rare opportunity to secure a substantial acreage lifestyle property within the tightly held Yarramalong community.

Country living at its finest - space, privacy and lifestyle.

Competitively priced, this property won't last long.

For further information or to arrange your private inspection, contact

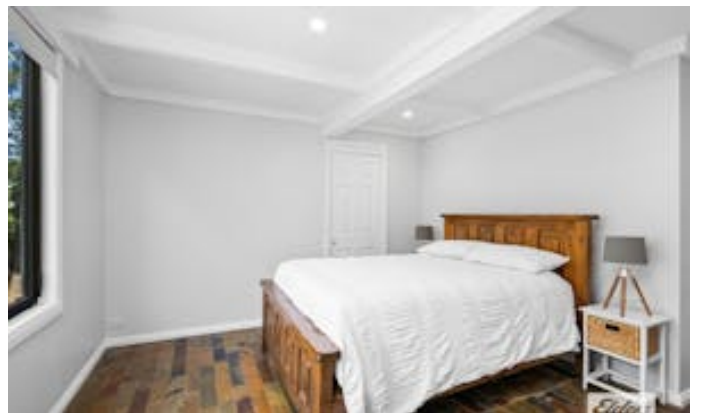
Shaun Coffey 0417 400556 or Tyler Doggett 0410 022 758 at Elders Real Estate Coast & Country today.

DISCLAIMER: This advertisement contains information provided by third parties. While all care is taken to ensure otherwise Elders Coast and Country, does not make any representation as to the accuracy of any of the information contained in the advertisement, does not accept any responsibility or liability and recommends that any client make their own investigations and enquiries. All images are indicative of the property only.

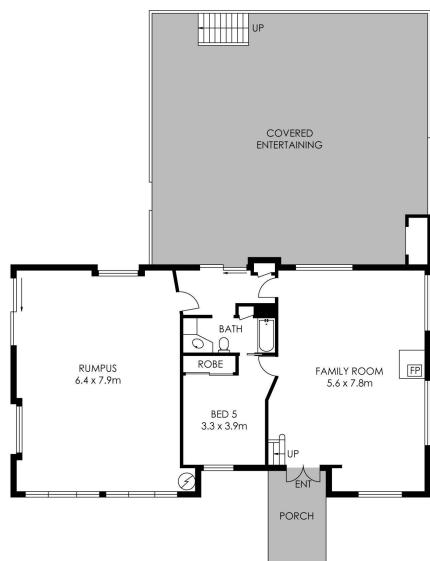
Other features: Combustion Wood Heater

- Land Area 10 acres
- Building Area: 225.00 square metres
- Bedrooms: 5
- Bathrooms: 2
- Car Parks: 4









LOWER LEVEL



UPPER LEVEL



SITE PLAN (Not to Scale)

1555 YARRAMALONG ROAD, YARRAMALONG

Scale in Metres 0 1 2 3 4 5



5 Beds



2 Baths



0 Cars

All dimensions herein are approximate and gathered from sources believed to be reliable. Whilst every effort is made for the accuracy of our floor plans, interested parties should rely on their own enquiries.

Internal Area: 225m²
External Area: 154m²