

13 Boundary Street, GLENREAGH, NSW 2450

Freshly Upgraded Glenreagh Gem with Space for Family, Pets, and Toys

The owners welcome all offers, which will be considered on or before Sunday, 12th October.

Upgraded for modern family living, this home offers space, comfort, and lifestyle in a peaceful village setting. With four bedrooms, an updated kitchen, newly finished floors, landscaped gardens, and laneway access for sheds, carport, boat or caravan storage, it's a property designed to deliver both practicality and enjoyment.

Set on a generous block backing onto a leafy nature park, the kids will love having a safe space to ride and play, while a dedicated chicken coop area adds a touch of country charm. The enclosed rear entertaining area has been smartly converted to provide an extra bedroom, giving the home additional versatility for families, guests, or work-from-home options.

Inside, the home feels fresh and inviting, with the modernised kitchen at its heart. The thoughtful upgrades extend outdoors, where landscaping enhances both street appeal and usability. With easy access to local amenities and the relaxed Glenreagh lifestyle, this property is ready for its new owners to simply move in and enjoy.

TYPE: For Sale

INTERNET ID: 133P0154

SALE DETAILS

Expressions of Interest

CONTACT DETAILS

Elders Real Estate Grafton
3/97-101 Prince Street
Grafton, NSW
02 6615 1602

Benny Holder
0411132517

13 Boundary Street is the ideal choice for families seeking space, updates, and a true balance of lifestyle and convenience.

For more information or to arrange your inspection contact Team Benny today 0491 616 380.

Benny Holder Licence No. 20312246

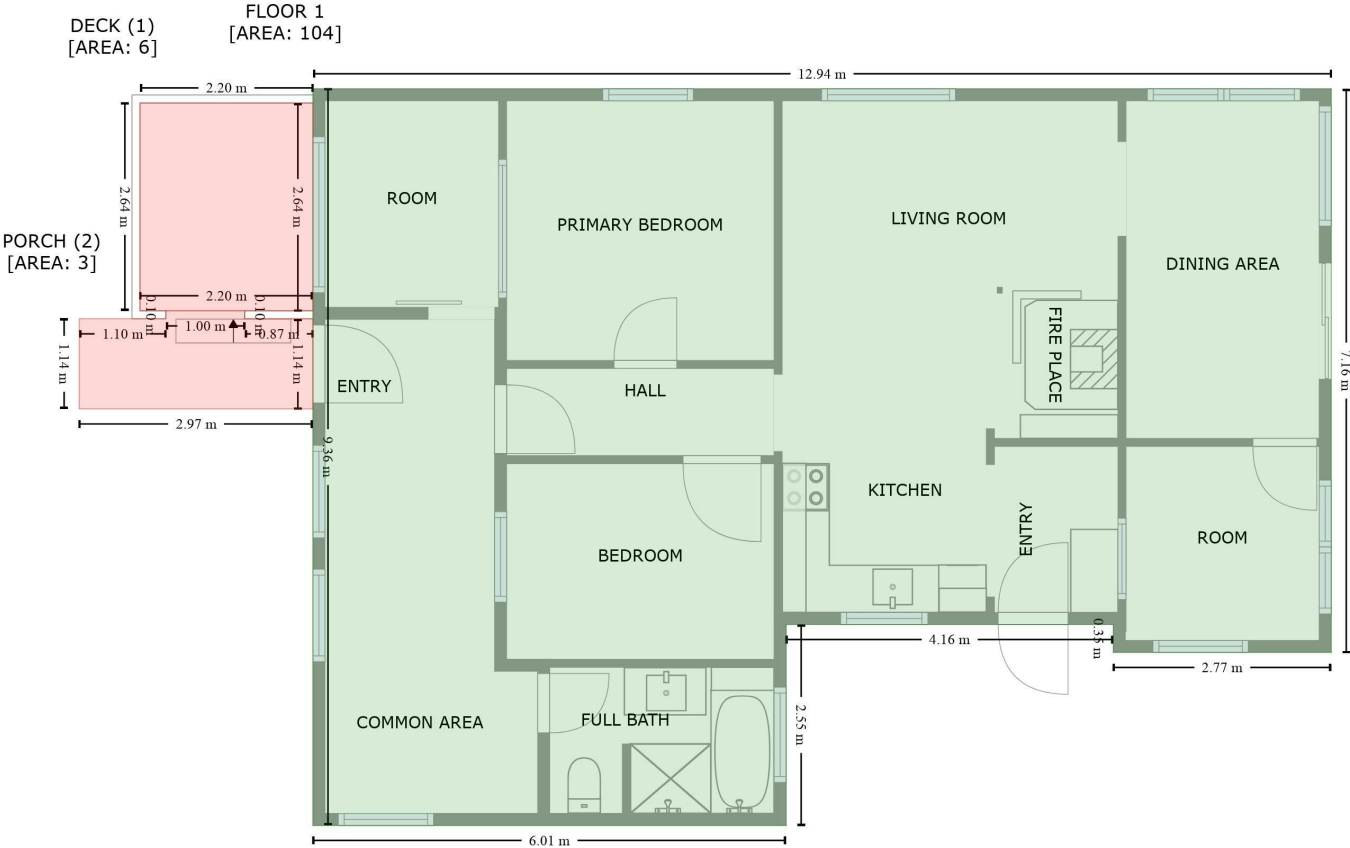
Candy Boulton Licence No. 20424578

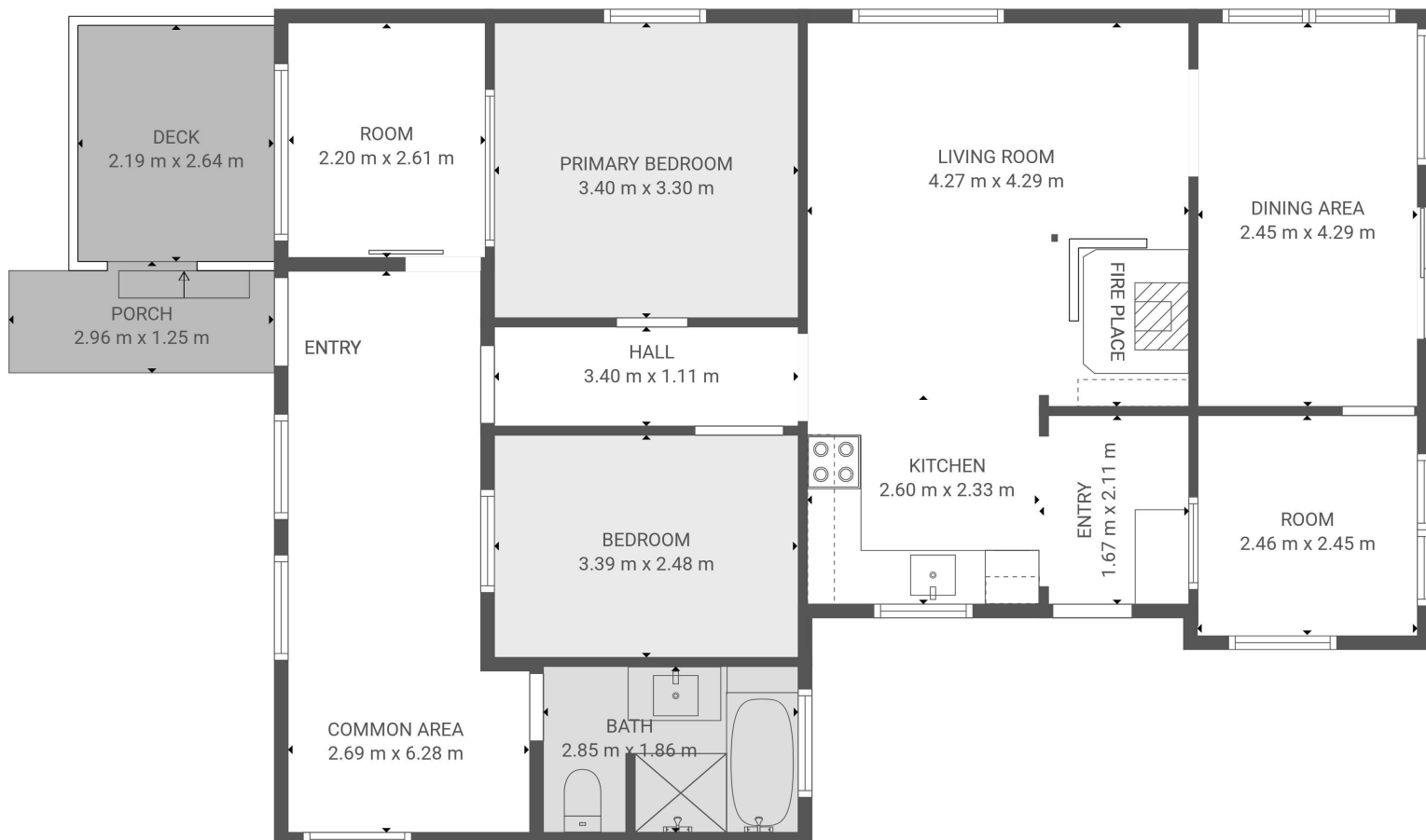
Disclaimer: All information provided in this property advertisement has been supplied to the agent by third parties. While every effort has been made to ensure its accuracy, neither the agent nor the vendor accepts any liability for errors or omissions. Prospective purchasers are advised to conduct their own investigations and rely on their own enquiries to verify the details provided

- Land Area 640.00 square metres
- Bedrooms: 3
- Bathrooms: 1
- Car Parks: 1









TOTAL: 96 m2

FLOOR 1: 96 m2

EXCLUDED AREAS: DECK: 6 m2, PORCH: 3 m2, WALLS: 8 m2

FLOOR PLAN CREATED BY CUBICASA APP. MEASUREMENTS DEEMED HIGHLY RELIABLE BUT NOT GUARANTEED.