



31 Meredith Street, STRAHAN, TAS 7468

TEEPOOKANA COTTAGE

Welcome to 31 Meredith Street, this eye catching cedar clad home is being offered for sale and would be a wonderful home or investment property.

Three bedrooms all with built-in robes, family bathroom with second shower, open plan living which allows you to stay engaged in food preparation and socialising and an entertainers deck which flows from the kitchen.

Fully fenced secure yard, double carport with storage shed (has council approval for carport to be enclosed), the property also has an undercover rear deck area which gives the home a second entertaining area.

The level family friendly block is within easy walking distance to Strahan Primary School, play ground and the main shopping hub.

TYPE: Sold

INTERNET ID: 17358581

SALE DETAILS

\$235,000

CONTACT DETAILS

Elders Real Estate Burnie

114 Wilson Street

Burnie, TAS

03 6432 2311

Nardi Stevens

0455025256

Disclaimer:

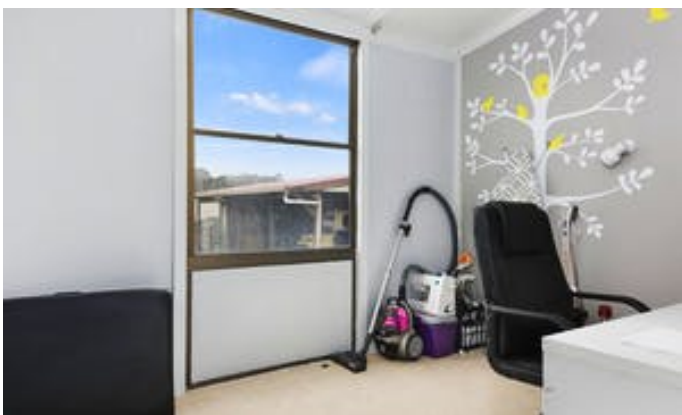
While Elders Real Estate Burnie has taken every care to verify the accuracy of the details in this advertisement, we cannot guarantee its correctness. Prospective buyers or tenants need to take such action as is necessary, to satisfy themselves of any

The particulars contained herein are supplied for information only and shall not be taken as a representation in any respect on the part of the vendor or its agent. Interested parties should contact the nominated person or office for full and current details.

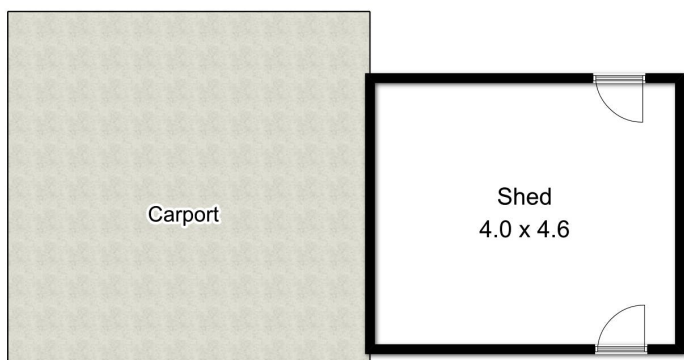
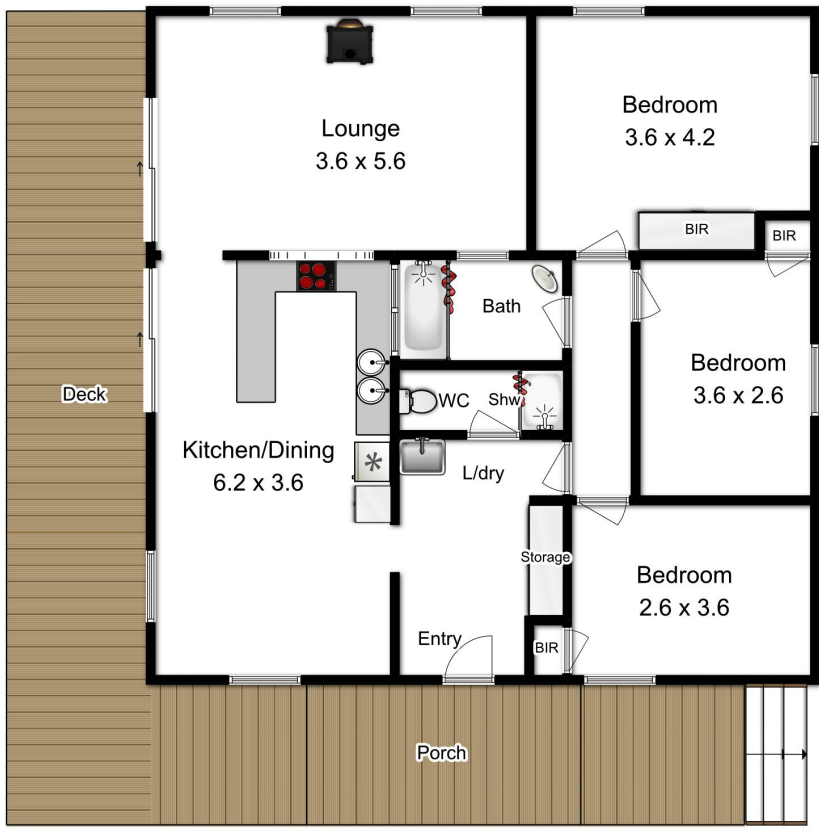
pertinent matters.

Other features: Built-In Wardrobes,Fireplace(s),Garden,Formal Lounge

- Land Area 835.00 square metres
- Bedrooms: 3
- Bathrooms: 1
- Car Parks: 4
- Double carport
- Air Conditioning







Approx 20 sq m



Produced by Open2view.com for Elders Burnie
 Fixtures and fittings are for display purposes only.
 Not to scale. This floorplan is a sketch,
 and all dimensions stated are approximate.
 All room measurements are in metres.
 Approx floor area 104 sq m
 Excluding Garage, Carport, Deck & Porch