

U1, 2-4 Atkell Avenue, CAMPBELLTOWN, SA 5074

City Fringe Without the Price Tag!!

Looking for your first home? We found it! On offer is a neat & sweet 1 bedroom unit situated in the increasingly popular suburb of Campbelltown.

A home suited to many, especially for the savvy investors with current rental returns of \$205 pw on a secure lease.

Features we love:

- Open plan kitchen/lounge/dining with split system air conditioning
- Gas cooking
- Gas hot water system
- Carpeted floors to the living area & bedroom
- Neat & tidy main bathroom
- Fantastic outdoor area to entertain friends & family!

TYPE: Sold

INTERNET ID: 18135654

SALE DETAILS

\$175,000

CONTACT DETAILS

ELDERS ON GRANGE

184 Grange Road
FLINDERS PARK, SA
08 8354 2424
RLA: 184226

Jimmy Tsarnas
0403 514 490

- Garden shed for all your extra storage needs
- Situated in a private complex
- Ample off-street car parking
- Plus more!!...

The property is perfectly located so close to the Adelaide CBD and is superbly positioned with an abundance of local amenities at your doorstep, such as the Glynburn Plaza, Newton Village, the Aquatics & Recreational Centre, local primary & high schools & accessible public transport all in easy reach.

Interested?? Call Jimmy today before it's too late!!

Disclaimer: Every care has been taken to verify the correctness of all details used in this advertisement. However, neither the Agent nor the Vendor accept any liability for any error or omission in this advertisement. All photos, marketing and plans are for illustrative purposes only and details to be relied upon should be independently verified.

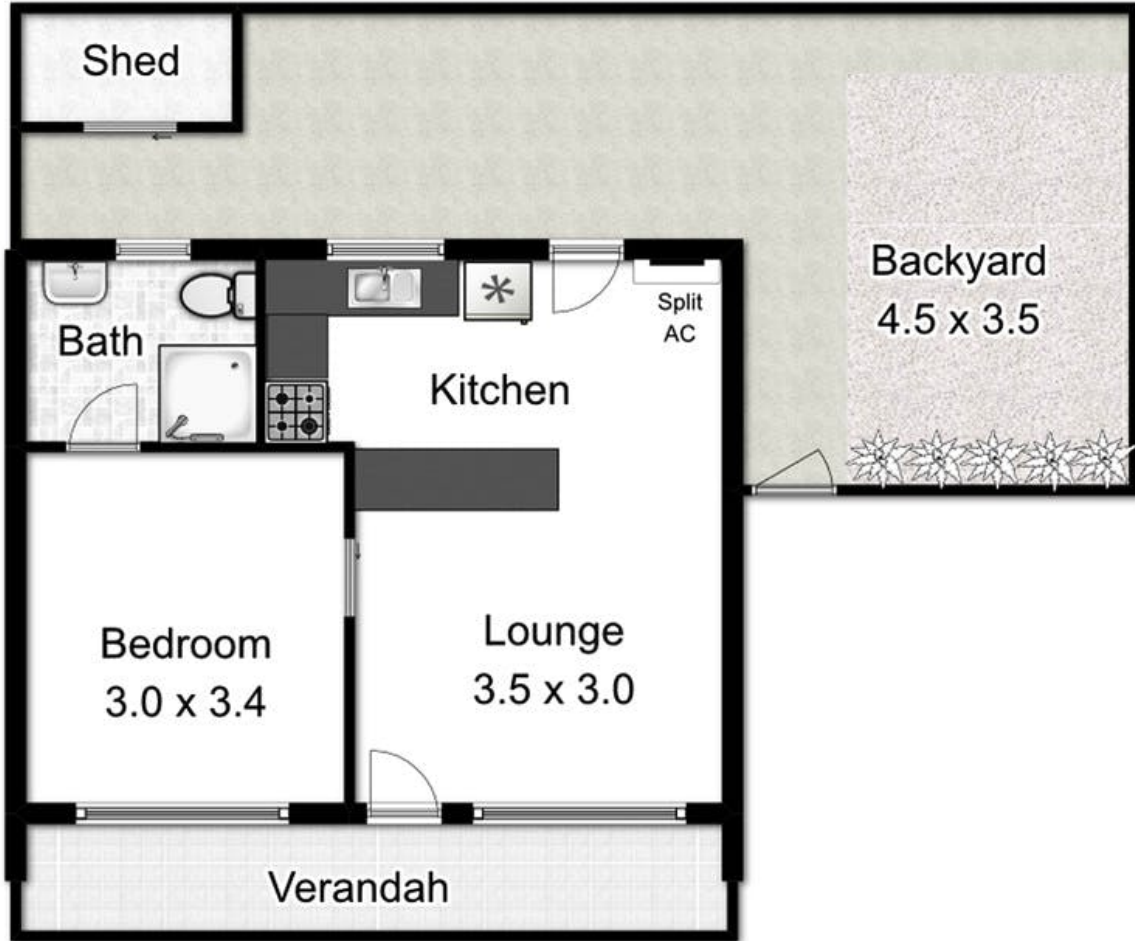
RLA 184226

Other features: Close to Schools,Close to Shops,Close to Transport,Garden

- Bedrooms: 1
- Bathrooms: 1
- Car Parks: 1
- Air Conditioning







Total Approx Living Area: 36.0M2

This drawing is for illustration purposes only.
All measurements are approximate only,
and information to be relied upon should be independently verified.

Landscaping in this image is Artist impression only.