



39 Sheridan Court, SUMMERHILL, TAS, AU 7250

Elevated Home With Sunny Aspect

Positioned in a no through street, capturing leafy views and a sunny aspect, this spacious brick and tile family home has a lot to offer you and your family.

On offer are 4 bedrooms (3 with built-ins) and the main with the convenience of an ensuite. The lounge area is light and spacious, is heated with a Daikin heat pump, and opens up to a cute Juliette balcony via glass sliding doors, perfect for a quiet glass of wine on a summers evening.

Adjacent to the lounge is the formal dining and a beautiful modern kitchen with gas hobs, electric oven, range hood and dishwasher. The kitchen opens out to the deck with views over the hills of the Gorge Reserve and suburbs. The bathroom offers a luxury deep soak bath tub as well as separate walk in shower area with a double shower-head, double vanity and one of the three toilets that are available in the home. Downstairs you will find two single garages, large rumpus/family room, laundry, separate toilet and the fourth bedroom.

The home is surrounded by easy maintenance gardens with secure fencing to the rear and generous parking to the front door providing enough room to keep a camper or boat.

Being within walking distance to both the Summerhill Primary School and Prospect High School and a short walk to the Gorge Reserve area, this home is a real find for

The particulars contained herein are supplied for information only and shall not be taken as a representation in any respect on the part of the vendor or its agent. Interested parties should contact the nominated person or office for full and current details.

TYPE: Sold

INTERNET ID: 18185980

SALE DETAILS

\$399,000 - \$429,000

CONTACT DETAILS

Elders Towns Shearing

58 Elizabeth Street
Launceston, TAS
03 6334 3484

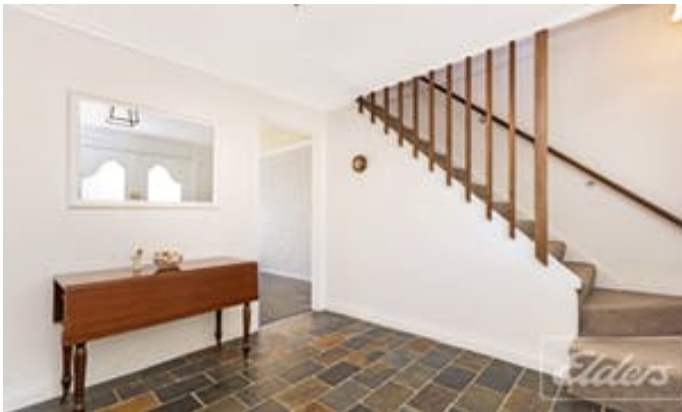
Ben Towns
0438 937 044

any growing family who want a mix of practical living coupled with a great lifestyle.

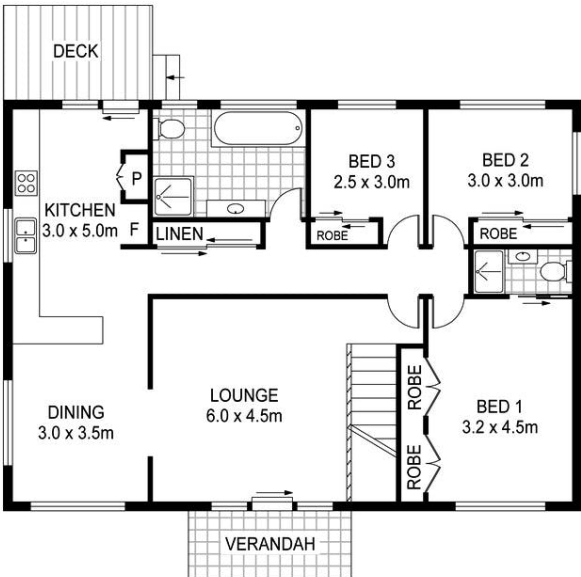
Other features: Built-In Wardrobes, Close to Schools, Close to Shops, Close to Transport, Garden

- Land Area 0.0721 hectares
- Building Area: 234 0.0234 hectares
- Bedrooms: 4
- Bathrooms: 2
- Double garage
- Air Conditioning

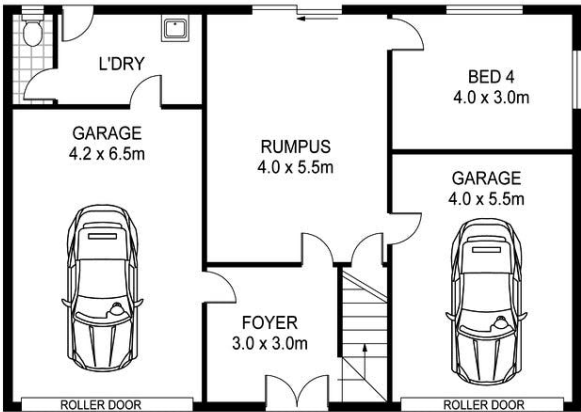








FIRST FLOOR



GROUND FLOOR

Scale in metres Indicative only. Dimensions are approximate. All information contained herein is gathered from sources we believe to be reliable. However we cannot guarantee its accuracy and interested persons should rely on their own enquiries

Area	M ²
Living	162
Deck	05
Verandah	07
Garage	49
Total	223

39 Sheridan Court, Summerhill