



7 Hillfarm Drive, PARK GROVE, TAS, AU 7320

PARK GROVE WITH BENEFITS

Imagine a warm summers day, the BBQ is fired up, your friends are gathered around laughing and chatting in your immaculately well paved patio area, you can hear the children opening the back gate which takes them out to an open public space/playground with children's play equipment, everyone is having a great time. If this sounds like the lifestyle you wish for or one that you currently enjoy, then this property is designed to simplify and make life easier!

A standout property within Hillfarm Drive, the pristine presentation, landscaping and facade from the street will induce a sense of pride every time you enter or depart the driveway.

Lounge room, combined kitchen and dining, 4 bedrooms all with built in robes - master with ensuite, rumpus room, 2 floor mount reverse cycle air conditioners, L-shaped double sized garage and additional storage options under the home.

We all know the benefits of this location, upgrade your lifestyle today whilst the sun shines! Call me, Andrew, for a prompt inspection. Please click on the 3D virtual tour link and floor plan for full measurements.

Other features: Built-In Wardrobes, Close to Schools, Close to Shops, Close to Transport, Garden

TYPE: Sold

INTERNET ID: 18686046

SALE DETAILS

\$439,000

CONTACT DETAILS

Elders Real Estate Burnie

114 Wilson Street

Burnie, TAS

03 6432 2311

Andrew Miles

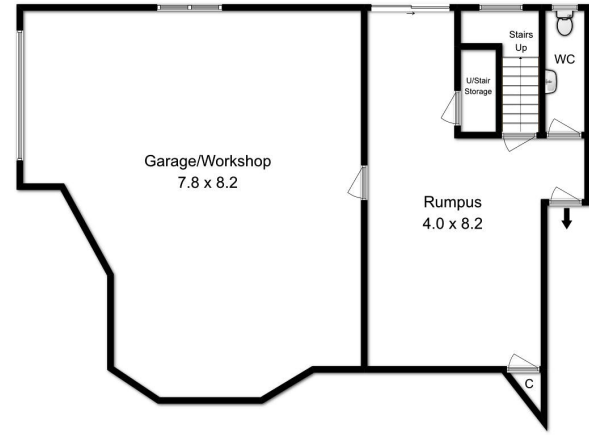
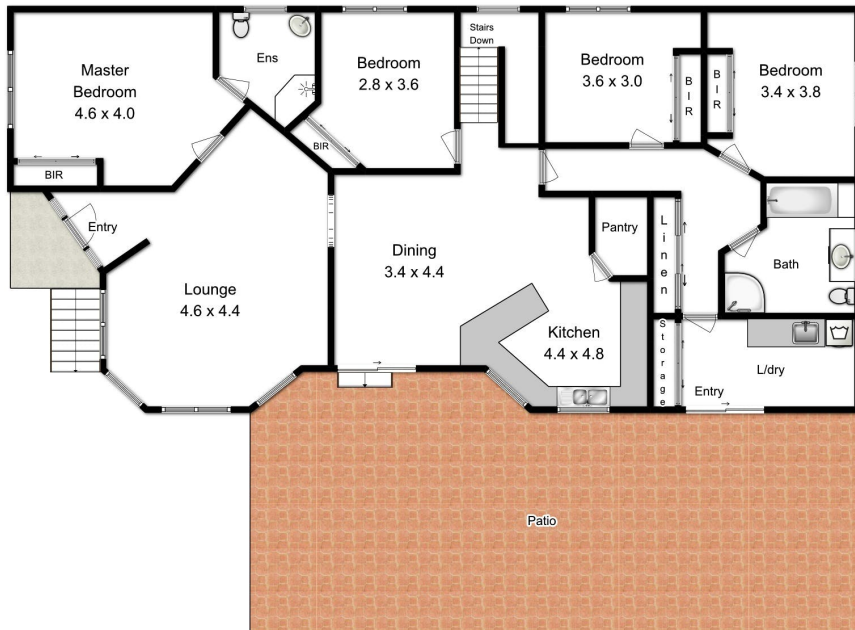
0409 170 772

- Land Area 0.072 hectares
- Bedrooms: 4
- Bathrooms: 2
- Double garage
- Air Conditioning









Produced by Open2view.com for Elders Burnie
Fixtures and fittings are for display purposes only.
Not to scale.
This floorplan is a sketch,
and all dimensions stated are approximate.
All room measurements are in metres.
Approx total floor area 267 sq m
Excluding Patio

