

## 3 Royal George Drive, HARRINGTON PARK, NSW, AU 2567

### Family Lifestyle

We all know you only have one chance to make a first impression which is why you will love this home. The lush bowling green lawns surrounded by beautifully established trees provide a welcoming entrance to this stunning family home. The home itself is set over two levels, the ground floor providing an abundance of living space with the kitchen at the heart of the home which makes it perfect for everyday living. There is also a large study upon entry, internal access from the double garage and laundry. Leading outside the home enjoys a large alfresco area plus a garden shed and plenty of green lawn for the kids to play. The added bonus is the side access making it easy to access the rear yard. Heading upstairs you will find 4 good size bedrooms, ensuite to the main bedroom, plus a main bathroom which benefits from a double vanity and corner bath.

The location is perfect with easy access to nearby shops including the Narellan Town Centre, great schools, quality parks and walking tracks and a huge Lake.

Other features: Ducted Air-Conditioning, Ducted Vacuum System

- Land Area 0.0612 hectares
- Bedrooms: 4
- Bathrooms: 2
- Double garage

**TYPE:** Sold

**INTERNET ID:** 18763166

**SALE DETAILS**

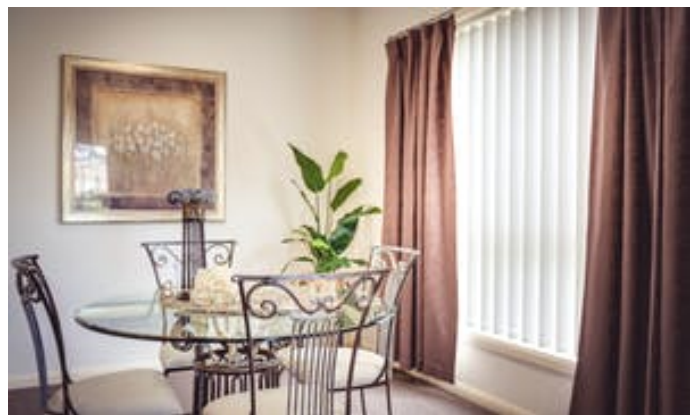
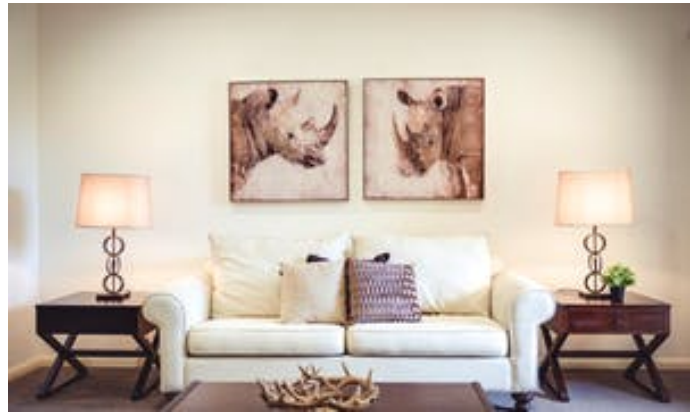
**\$820k - \$850k**

**CONTACT DETAILS**

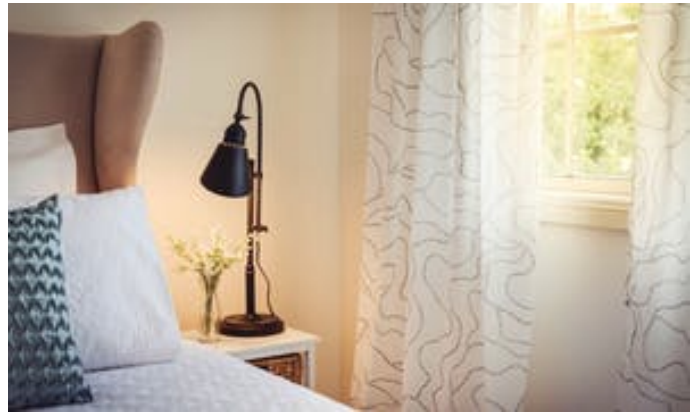
**Elders Real Estate  
Camden**

The Clocktower Building  
CAMDEN, NSW  
02 4655 3000

**Peter Salisbury**  
0457 777 517









Scale shown in metres. All dimensions herein are approximate and gathered from sources believed to be reliable. Whilst every effort is made for the accuracy of our floor plans, interested parties should rely on their own enquiries.



3 Royal George Drive, Harrington Park

