



2408 Taralga Road, GOULBURN, NSW, AU 2580

Pyree Park - Your Bluestone Home

**13.76 hectares, 34.00 acres**

- \* 13.76 HA or 34 acres
- \* 15 minutes from Goulburn
- \* Basalt soils with wonderful established gardens
- \* 2 stand shearing shed with power and cattle yards
- \* Extra and ample shedding
- \* Expansive views, sealed road to front gate
- \* Bore water and extra water tanks
- \* 6 paddocks all with water

Often sought but rarely available, Pyree Park is a very unique offering in the tightly held Goulburn district.

**TYPE:** Sold

**INTERNET ID:** 18766974

**AUCTION DETAILS**

11:00am, Friday May 4th,  
2018. Merino Room,  
Goulburn Soldiers Club

**CONTACT DETAILS**

**Elders Real Estate**  
137 Auburn Street  
Goulburn, NSW  
02 4821 6000

**David Medina**  
0419 772 233

Auction Details:

11AM, 4th May 2018

Merino Room, Goulburn Soldiers Club

- Land Area 13.759312 hectares
- Bedrooms: 3
- Bathrooms: 1
- Views: 0



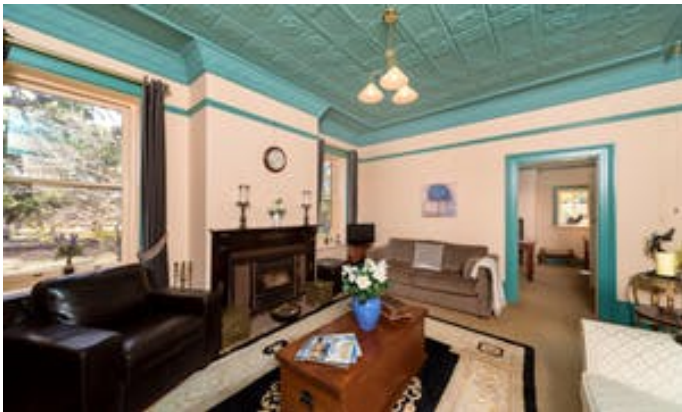
PROPERTY OVERVIEW

Yards                                      Sheep, Cattle, Other

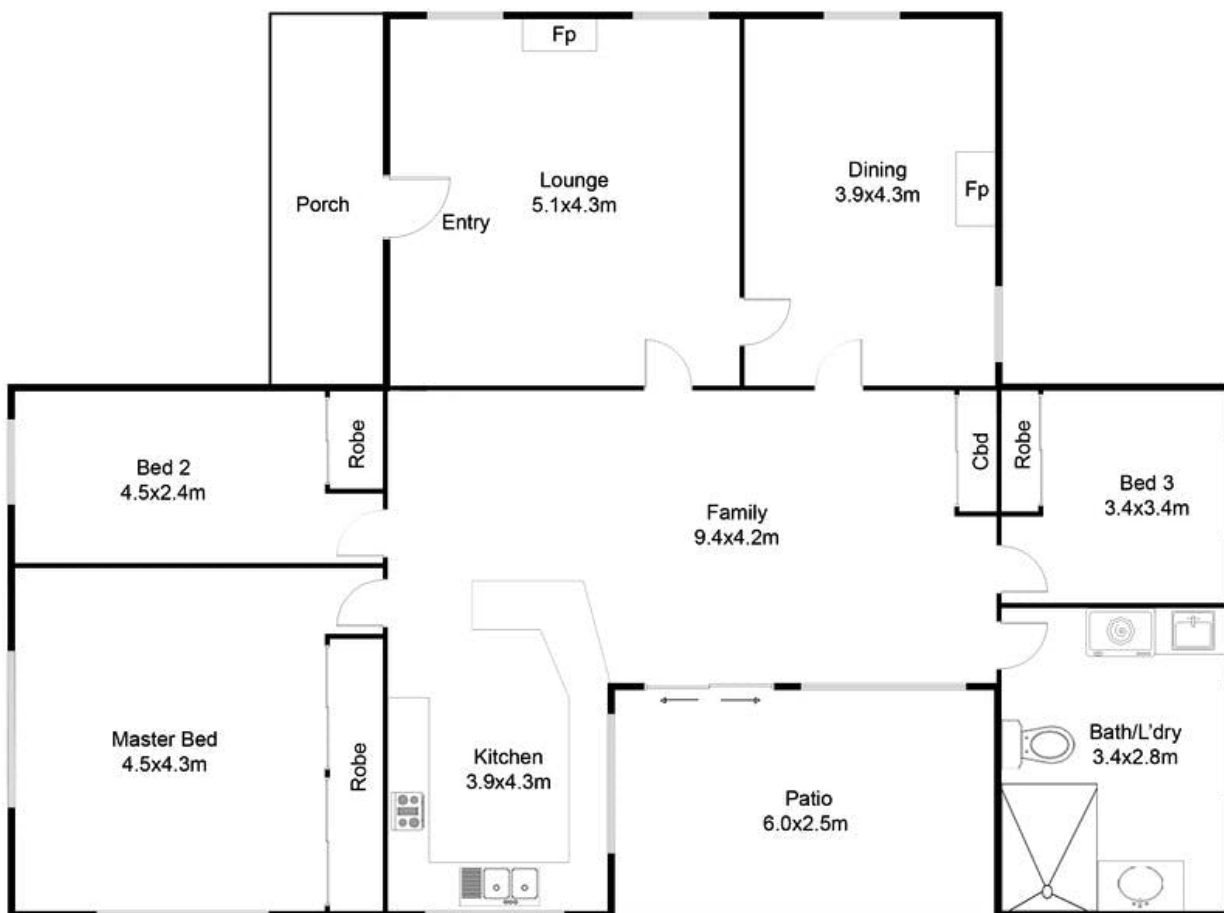
HOMESTEAD

Bedrooms                                3  
Bathrooms                                1









This floor plan including furniture, fixture measurements and dimensions are approximate and for illustrative purposes only.  
Boxbrownie.com gives no guarantee, warranty or representation as to the accuracy and layout. All enquiries must be directed to the agent, vendor or party representing this floor plan.

2408 Taralga Road