



7 Malonga Drive, SHOREWELL PARK, TAS, AU 7320

LEVEL, 2 GARAGES, 2 LIVING & DECK

Feature packed property into a lowly stacked price.

Standing on the street looking in you wouldn't believe I am describing the same property! Neutral internal paintwork throughout the bedrooms and incredible free flowing living spaces that encapsulates light and glows in the late afternoon sun. Economical reverse cycle air conditioner, kitchen with walk in pantry and ready plumbed for dishwasher and separate bath and shower in the bathroom.

Single garage with remote and internal access adjoining home and almost disbelief when your eyes feast upon the free standing garage in the rear yard and an additional workshop/storage space under the home.

The partly covered rear decking wraps around the 2nd living space and meets the rear laundry door providing easy access and functionality.

Homes in this price point offering as many creature comforts are a hard find, now you've found it! Call me, Andrew promptly to inspect as it was only available for 10 hours when it last sold!

Other features: Built-In Wardrobes, Close to Schools, Close to Shops, Close to Transport, Garden

TYPE: Sold

INTERNET ID: 18900771

SALE DETAILS

\$275,000

CONTACT DETAILS

Elders Real Estate Burnie

114 Wilson Street

Burnie, TAS

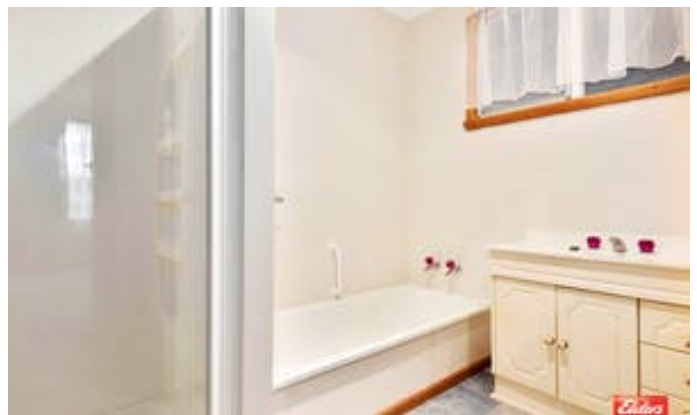
03 6432 2311

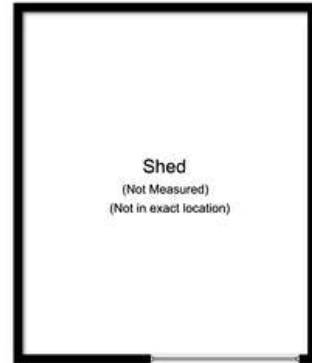
Andrew Miles

0409 170 772

- Land Area 0.0731 hectares
- Building Area: 149 0.0149 hectares
- Bedrooms: 3
- Bathrooms: 1
- Double garage
- Air Conditioning







Produced by Open2view.com for Elders Burnie
Fixtures and fittings are for display purposes only.
Not to scale.
This floorplan is a sketch,
and all dimensions stated are approximate.
All room measurements are in metres,
Approx floor area 163 sq m
Excluding Shed & Deck

