



2 Somerset Place, PORT MACQUARIE, NSW, AU 2444

SOLD IN EMERALD DOWNS

Tucked away in a quiet cul de sac in the exclusive Emerald Downs area sits this young low maintenance home. You will be surprised with the benefits on offer, all within an easy walk to local shopping centre, Tacking Point Tavern and less than 3 kilometres to the iconic Lighthouse Beach. An opportunity not to be missed!

- Investor liquidating, instructions are to sell
- Single level from front to back
- Spacious living with separated tiled dining
- Stone benches, stainless appliances and ample storage
- Ducted air conditioning, intercom, drive through garage
- Private undercover alfresco area with low maintenance gardens
- Option for long term tenants to continue tenancy

TYPE: Sold

INTERNET ID: 19206077

SALE DETAILS

\$540,000

CONTACT DETAILS

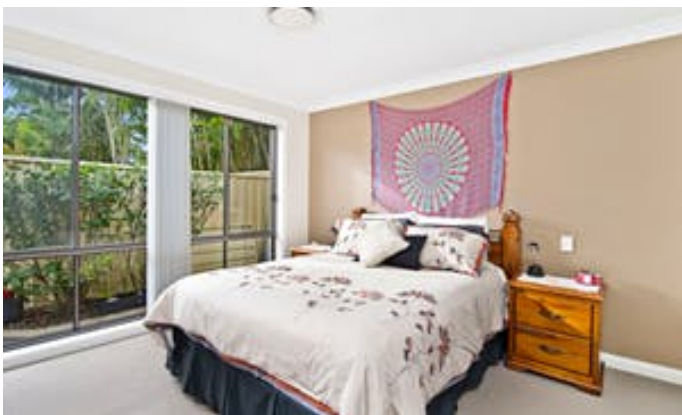
Elders Real Estate
62 Clarence Street
Port Macquarie, NSW
02 6584 1199

Nathan Wilson
0418 766 977

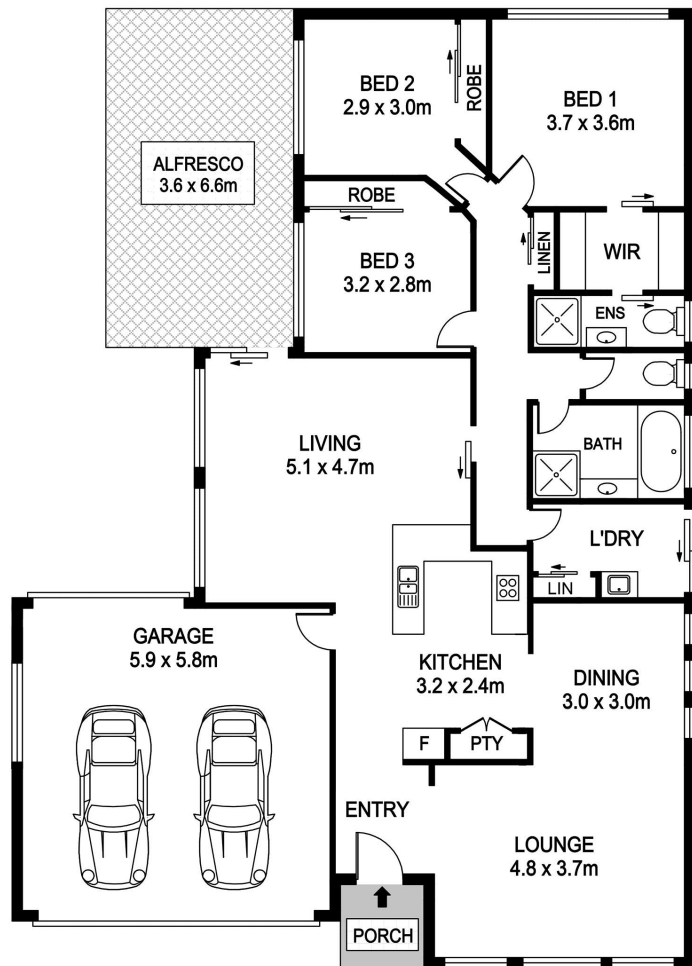
The information contained in the advertising of this property is not based on any independent enquiries or knowledge of the agents, and the vendor and agents expressly disclaim any liability arising therefrom. The accuracy of the information cannot be guaranteed, and prospective purchasers should make their own enquiries and form their own judgement as to these matters.

Other features: Built-In Wardrobes, Close to Schools, Close to Shops, Close to Transport, Garden

- Land Area 0.03776 hectares
- Bedrooms: 3
- Bathrooms: 2
- Double garage
- Air Conditioning







2 Somerset Place, Port Macquarie

INTERNAL : 168.2m²
 ALFRESCO : 23.7m²

DISCLAIMER

PLANS SHOWN ARE FOR MARKETING PURPOSES ONLY. ALL DIMENSIONS ARE APPROXIMATE AND NOT TO SCALE. THEY ARE SUBJECT TO ERRORS AND INACCURACIES AND NO LIABILITY WILL BE ACCEPTED. INTERESTED PARTIES SHOULD MAKE THEIR OWN INQUIRES.

