

95 Watson Street, JINDERA, NSW 2642

Designed Around The Growing Family With A Bonus Shed For Dad!

Who said a large family home couldn't be stylish?! This amazing home offers it all including a shed for Dad!

Located in the peaceful country township of Jindera, an easy commute to Albury, quality Hotondo built home only five years old, still under builders warranty!

Two large living areas, five bedrooms and a private study nook is only the beginning of all this home offers.

- Open plan central living incorporating kitchen, family dining room and recreational area
- Kitchen is a great lay out and includes stainless steel appliances including dishwasher and separate pantry
- Master bedroom to the front of the home providing privacy and offering walk-in robe and generous ensuite
- Four remaining bedrooms all with built-in-robos, two mirrored or utilise the fifth bedroom as a further living area
- Separate front living area, great for a formal lounge or parents retreat

The particulars contained herein are supplied for information only and shall not be taken as a representation in any respect on the part of the vendor or its agent. Interested parties should contact the nominated person or office for full and current details.

TYPE: Sold

INTERNET ID: 19708587

SALE DETAILS

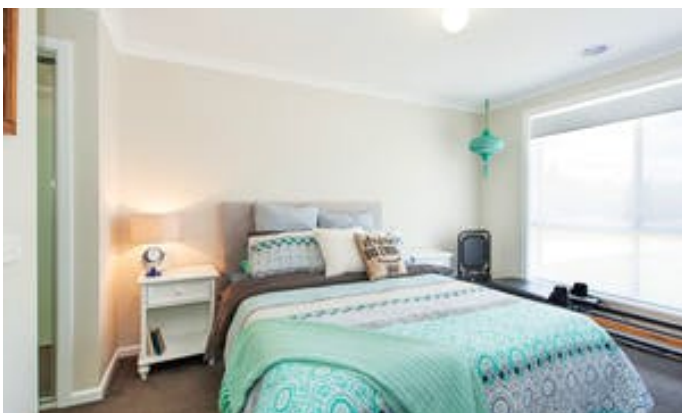
\$439,000

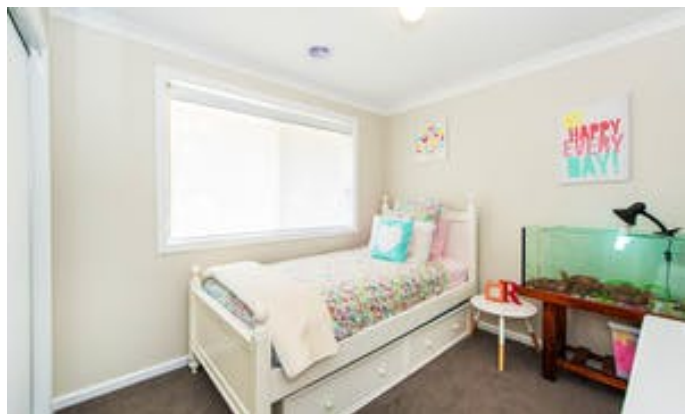
CONTACT DETAILS

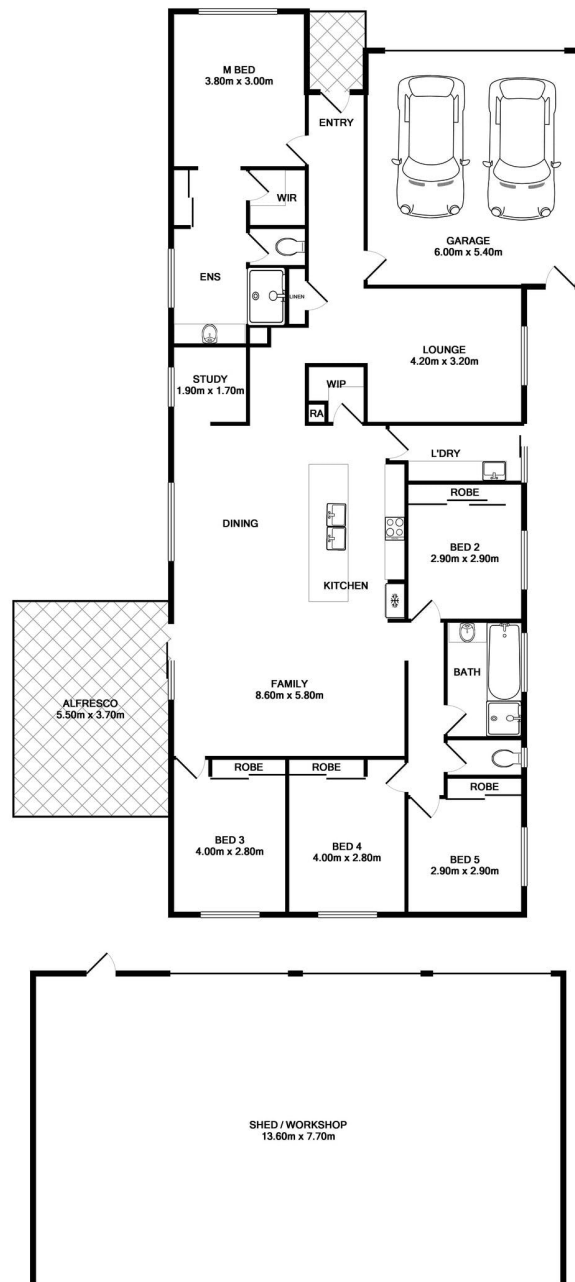
Elders Limited
140 High Street
WODONGA, VIC
02 6024 5450

Jamie Maynard
0413 743 361

- Full family bathroom with easy access to kids bedrooms
- Ducted gas heating and evaporative cooling, wooden laminated flooring to high traffic areas
- Outdoor covered entertaining
- Huge 13.6 x 7.7m (approx) three bay powered shed with workshop on concrete slab & plumbing to shed with side access to shedding and rear yard available, additional garden shedding also available
- Double lock-up garage with remote access and internal door into home
- Set on a lovely 1008m2 allotment
 - Land Area 1,008.00 square metre
 - Bedrooms: 5
 - Bathrooms: 2
 - 5 car garage







Measurements are approximate. Not to scale. Illustrative purposes only