



439 Stowport Road, STOWPORT, TAS 7321

RESIDENTIAL LIVING WITH RURAL VIEWS

Just over 1000m² of land and with 360 degree views from on top of the Stowport Hill sits this beautifully renovated 3 bedroom home. The open plan living areas are north facing, the kitchen is complete with updated appliances plus there is plenty of space to entertain on the undercover decking.

The property was extended in 2014 to accommodate the 3 king sized bedrooms, the main with a large walk in robe and ensuite and an extra study space.

What sets this house apart is the large double garage with room for additional storage and the country living it provides while being only 5 minutes to the Wivenhoe shopping precinct.

Call Gareth Jubb to inspect the property.

Other features: Fireplace(s), Garden, Secure Parking

- Land Area 1,012.00 square metre
- Bedrooms: 3
- Bathrooms: 2
- Double garage

TYPE: Sold

INTERNET ID: 19921288

SALE DETAILS

\$349,000

CONTACT DETAILS

Elders Real Estate Burnie

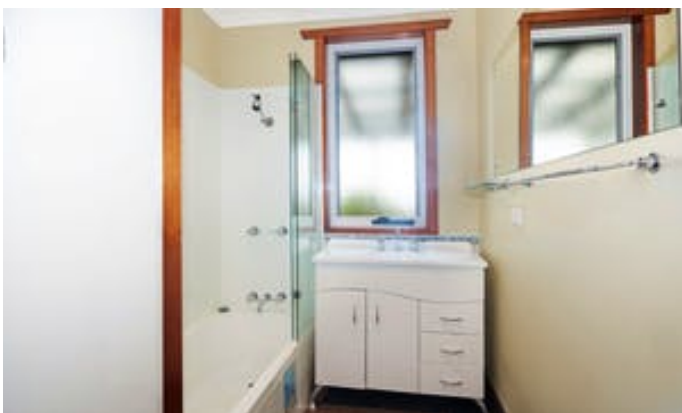
114 Wilson Street

Burnie, TAS

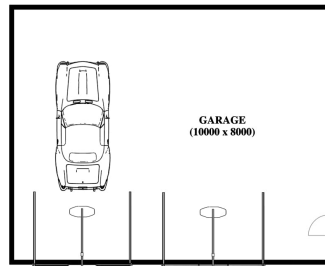
03 6432 2311

Gareth Jubb

0410 441 417







STOWPORT
439 STOWPORT ROAD
 House Area: 146sq metres
 Garage Area: 80sq metres



SCALE 1 : 100
 0 1 2 3 metres
 IMPORTANT Measurements area approximate
 -interested parties need to verify

