



## 8 Cummings Street, BOAT HARBOUR BEACH, TAS 7321

### A FLEXIBLE OFFERING IN AN UNRIVALED LOCATION

Widely renowned throughout Australia as a postcard pretty destination and a magnet to tourists and sun loving locals, it doesn't matter how far you travel and compare, Boat Harbour Beach truly has that wow factor.

A flexible offering as a large family home, absolutely ideal for extended family stays and the space and storage this well built home provides (see attached floor plan) would also be ideal for holiday Airbnb accommodation and the like, either way this property will please the occupants with the breathtaking north-easterly aspect overlooking the clean and crisp white sands of the local swimming beach.

The local dine in cafe is popular for all that visit the area and the property is located 14kms from Wynyard-Burnie airport, 33kms from Burnie and 9kms from Sisters Beach and Rocky Cape National Park, rich in scenery & coastal walking tracks.

This property is not only a sizable family home but one that provides many opportunities, a beachside lifestyle that will encourage you to get outdoors, enjoy the seaside aroma and get moving!

Other features: Garden, Secure Parking

- Land Area 2,610.00 square metres

**TYPE:** Sold

**INTERNET ID:** 20063429

#### SALE DETAILS

**Offers Considered  
Between \$749,000 -  
\$799,000**

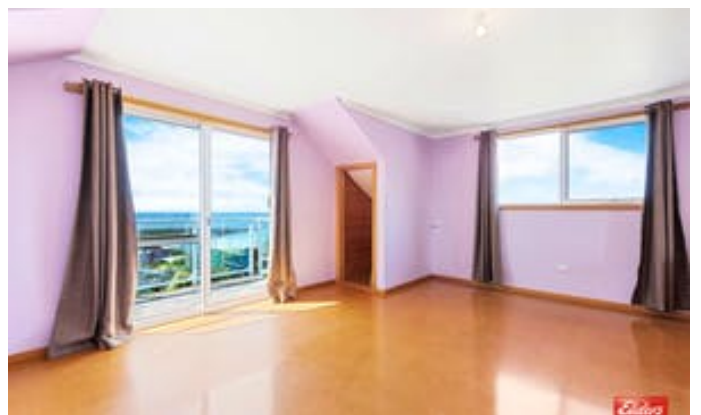
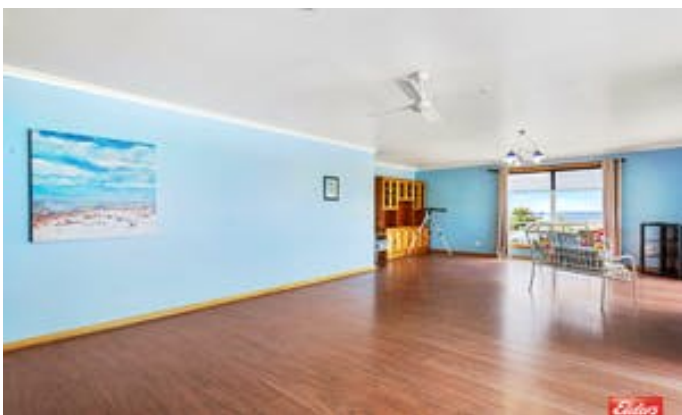
#### CONTACT DETAILS

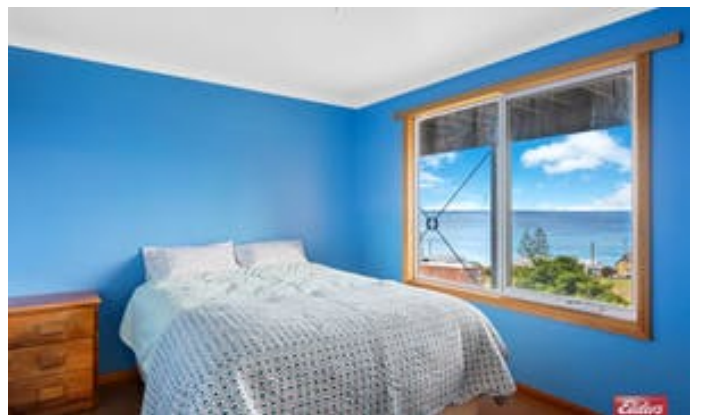
**Elders Real Estate Burnie**  
114 Wilson Street  
Burnie, TAS  
03 6432 2311

**Wendy Cunningham**  
0418 145 705

- Bedrooms: 7
- Bathrooms: 3
- Double garage
- Air Conditioning

















Produced by Open2View.com for Elders Burnie  
 Fixtures and fittings are for display purposes only.  
 Not to scale.  
 This floorplan is a sketch, and all dimensions stated are approximate.  
 All room measurements are in metres.  
 Approx floor area 238 sq m  
 Excluding Deck



Ground Floor

Produced by Open2View.com for Elders Burnie  
 Fixtures and fittings are for display purposes only.  
 Not to scale.  
 This floorplan is a sketch, and all dimensions stated are approximate.  
 All room measurements are in metres.  
 Approx floor area 150 sq m

