



60 Curraghmore Avenue, PARK GROVE, TAS 7320

GATEWAY TO SCHOOL GROUNDS

There are many reasons for Park Groves popularity and more particularly this street. Direct access from the rear gate to Park Groves popular and well regarded "Burnie Primary" will make mornings less of a chore and the quiet no through street position benefits from the adjacent reserve with pathways and enclosed pet exercise areas, this will become your convenient escape!

As per the floor plan (see link) the home allows for a couple of sitting spaces and provides a light and airy feel accentuated by the high ceilings and windows encouraging sunshine.

The rear yards are level and low maintenance and the undercover entertaining space directly from the kitchen and dining area will be a great gathering point across the summer period.

We all know how convenient Park Grove is, however this property takes that convenience to the next level, time to make the move!

Call me, Andrew for a closer look!

Other features: Built-In Wardrobes, Close to Schools, Close to Shops, Close to Transport, Garden

TYPE: Sold

INTERNET ID: 20091663

SALE DETAILS

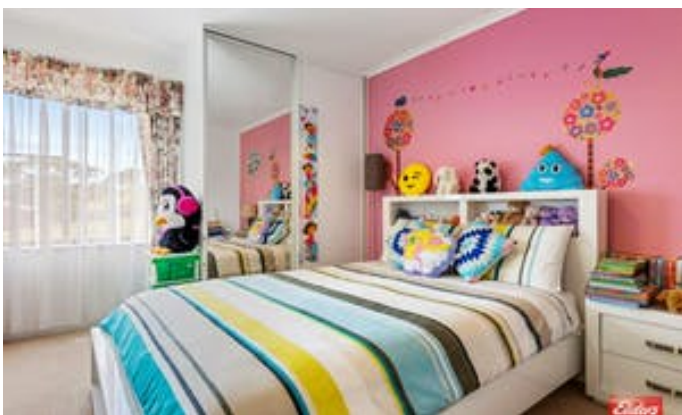
\$299,000 to \$319,000

CONTACT DETAILS

Elders Real Estate Burnie
114 Wilson Street
Burnie, TAS
03 6432 2311

Andrew Miles
0409 170 772

- Land Area 825.00 square metres
- Building Area: 156.00 square metres
- Bedrooms: 3
- Bathrooms: 1
- Single garage
- Single carport







Produced by Open2view.com for Elders Burnie
 Fixtures and fittings are for display purposes only.
 Not to scale.
 This floorplan is a sketch, and all dimensions stated are approximate.
 All room measurements are in metres.
 Approx floor area 142 sq m
 Excluding Garage, Carport & Paved Areas

