

22 Lorne Street, ALBERT PARK, SA 5014

Low maintenance, spacious living at its best

Built in 2006, this replication bungalow is perfect for the young family, down sizers or investors alike.

Featuring:

- Three generously sized bedrooms, the main serviced with ensuite and all with Built-in robes
- Open plan kitchen featuring 900mm European gas cooking and two drawer dishwasher looking out over Dining and Family rooms
- Floating floors and energy efficient LED lighting throughout
- Both bathrooms finished with floor to ceiling tiling and upgraded vanities
- Ducted 6 star Gas heating and evaporative cooling throughout.
- 2nd living area/home theatre looking out into courtyard
- All weather Alfresco makes the perfect option for outdoor entertaining

TYPE: Sold

INTERNET ID: 20176928

SALE DETAILS

Contact Agent

CONTACT DETAILS

ELDERS ON GRANGE

184 Grange Road
FLINDERS PARK, SA

08 8354 2424

RLA: 184226

Lyndon Foot

0402 302 493

- Double automatic garage with drive through door perfect for boat or trailer
- Remote operated security gate
- NBN already connected to the street

What we love about the area

- Just minutes to West Lakes Shopping Centre and the sandy beaches of Grange, West Lakes and Semaphore
- Walking distance to the recently upgraded Albert Park Train Station and from there 15 minutes to the CBD
- Walking distance to child care, private and public schools

Forget the paint brushes and the headache of renovation. This is ready to live in now.

Specs:

Council: City of Charles Sturt

Zoning: R 16

Built: 2006

Land: 386sqm

Internal: 178sqm

Council Rates: \$1,217pa (approx)

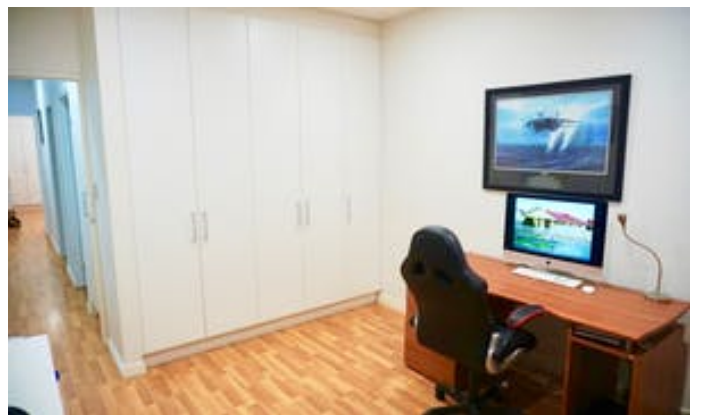
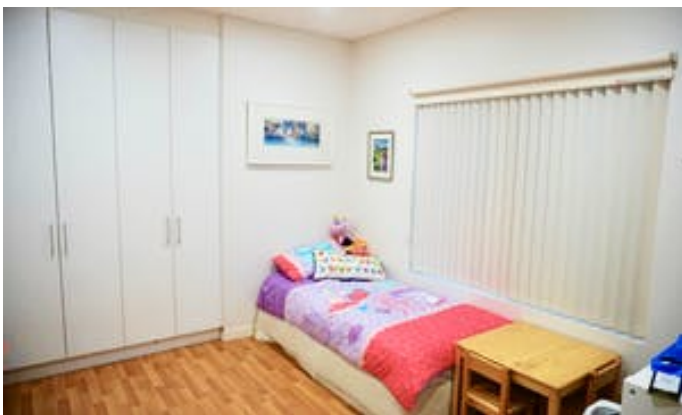
SA Water: \$188.61pq

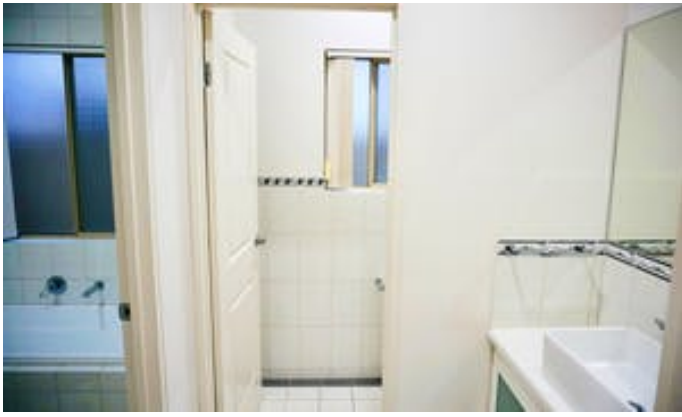
ES Levy: \$125.85pa

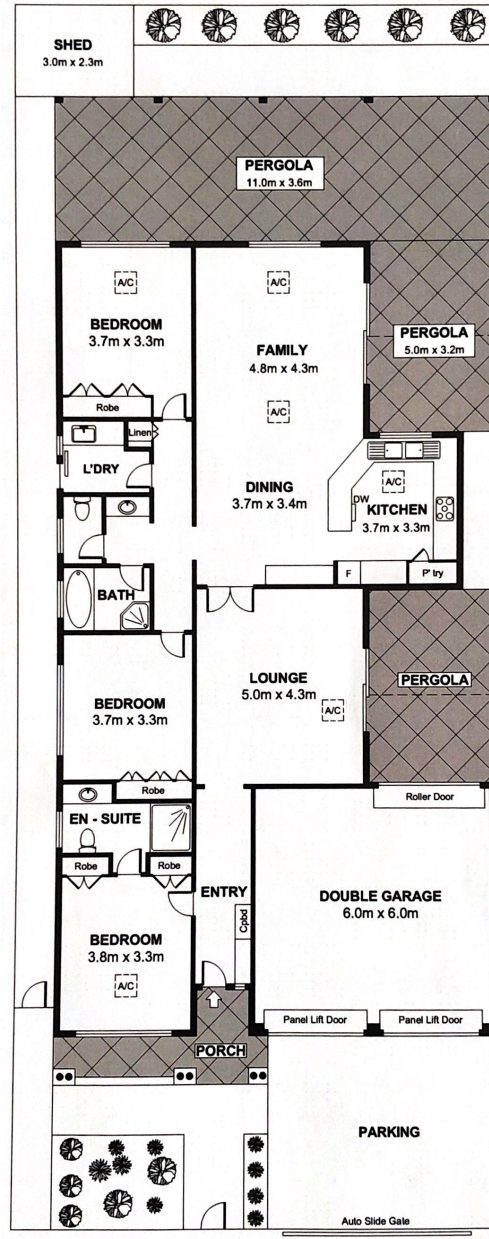
Whilst every attempt is made to ensure all specifications are accurate, the accuracy of this information can not be guaranteed, and prospective purchasers should make their own judgement as to these matters.

Other features: Built-In Wardrobes, Close to Schools, Close to Shops, Close to Transport, Secure Parking

- Land Area 386.00 square metres
- Building Area: 178.00 square metres
- Bedrooms: 3
- Bathrooms: 2
- Double garage
- Air Conditioning







Approx. Gross
Internal Area = 178 m²