

7 Captain Sturt Road, HINDMARSH ISLAND, SA 5214

Striking Family Home on 2.47 Acres

Prime lifestyle property situated on 2.47 acres in a great location not too far from Goolwa's township, the river and schools.

Designed for the largest of families the immaculate home, built in 2010, is contemporary, stylish and super spacious offering 5 bedrooms, 2 bathrooms, lounge room, home theatre room and sweeping family / dine / kitchen area. The generous sized kitchen includes WIPantry, dishwasher, large chef's oven with gas cook top and extensive bench & cupboard space.

Polished timber floors throughout make a striking impact and blend with the contemporary style beautifully. Additional extras include ducted RCAC, high ceilings, and both rain & mains water plumbed to the home.

Extensive garaging comes in the form of a double garage UMR with auto panel-lift door plus huge shedding / workshops at the rear that incorporates a high clearance caravan or boat parking bay. Shed Boss built, the dimensions of this shed are 9m x 9m with attached 12m x 3.6m, high clearance and includes windows, 3 roller doors, 2 PA doors and sisalation to the ceilings.

TYPE: Sold

INTERNET ID: 20639792

SALE DETAILS

\$575,000

CONTACT DETAILS

Elders Real Estate Goolwa

9 Cadell Street

GOOLWA, SA

08 8555 3511

RLA: 213003

Lucas Bradley

0438 404 492

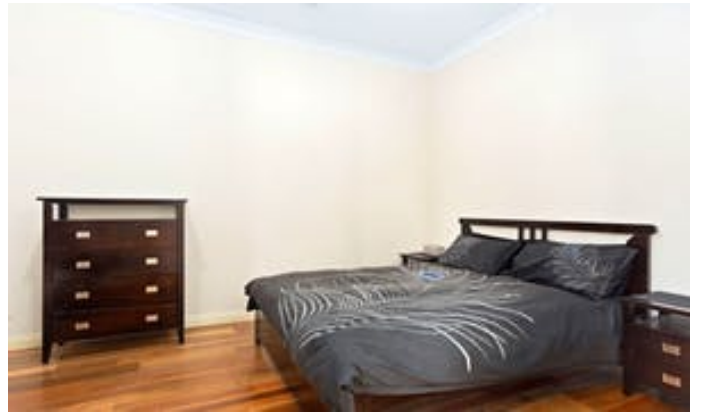
The rest of the property really is a blank canvas, a place to create your own oasis, whether it's gardening, lawns and bike tracks for the kids or more shedding (STCC), there is ample room for everyone. Flooring for an outdoor living area is already in place too, the perfect start to create your own outdoor space.

A striking property in a great location surrounded by established trees and shrubs creating a very peaceful and private hideaway yet very close to town.

Other features: Secure Parking

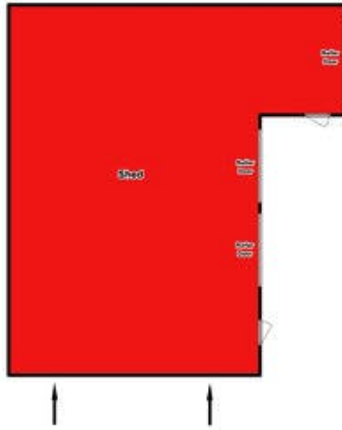
- Bedrooms: 5
- Bathrooms: 2
- 5 car garage
- Air Conditioning







7 Captain Sturt Road
HINDMARSH ISLAND



AREA (Estimate Only)	
LIVING	210.30m ²
VERANDAH	9.50m ²
PORCH	10.50m ²
GARAGE	34.40m ²
SHED	126.10m ²
TOTAL	390.80m²



This drawing is for illustration purposes only.
All measurements are approximate only and estimation.
Intended to be relied upon should be independently verified.
*Floorplan produced by open2view.com