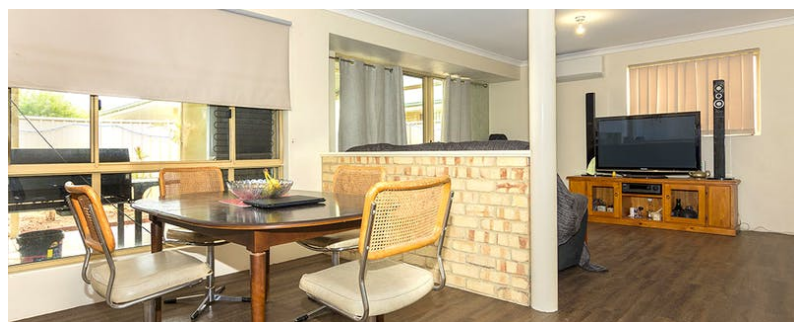




Inspections By Appointment Only



2a Pinto Close, EATON, WA 6232

FANTASTIC LOCATION

This home is on own 534m2 block with no common ground and no strata fees.

Located within walking distance to 7 day a week shopping at Eaton Fair, doctors, dentists, tavern, parklands, sporting facilities, and public transport.

The home comprises 3 bedrooms 2 bathrooms, lounge, kitchen/family/meals with reverse cycle air conditioning, laundry, double garage and a huge gable patio for outside entertaining.

A bargain at this price.

Other features: Close to Schools, Close to Shops, Close to Transport, Secure Parking

- Land Area 534.00 square metres
- Bedrooms: 3
- Bathrooms: 2
- Double garage
- Air Conditioning

TYPE: Sold

INTERNET ID: 20650863

SALE DETAILS

\$289,000

CONTACT DETAILS

SDEA Bunbury
13 Stirling Street
Bunbury, WA
08 9721 3533

Terry Bright
0427 969 818



