



44 Starbush Road, BANDIANA, VIC 3691

Elegant Finishes and Luxurious Proportions

There's a real sense of occasion when you step into this beautifully presented and finished family home, in sought-after Alpine Views Estate. Crafted by JG King Homes with that sturdiness that steel frames provide, the eye-catching landscaping guides you through to its formal entry and the rich timber flooring for that feeling of warmth and grace. Leading off to the right is the theatre room and 4 generous bedrooms, with the largest one also featuring an ensuite; perfect for guests, grandparents or older teens. Flowing to the left is the spacious formal lounge, the welcoming open plan family and dining area with a tasteful and well-equipped kitchen, an office, and the king sized master bedroom, complete with a full ensuite including a spa and a walk-in robe. There's also heaps of storage space, a family bathroom, ducted heating and cooling, and a 2kw solar system to keep a firm lid on energy costs. Courtesy of the elevated 766m2 block, there's views of the hills and a reserve from all the rooms at the front of the home. Outside, the home has been designed with privacy in mind and is the epitome of low maintenance living, with a bright undercover entertaining area leading from the family and dining area, established plantings, hassle-free pavers, lovely gardens, and extensive retaining walls. There's also a double garage with drive through access via a rear roller door, plus there's room both beside the garage and the opposite end of the home for a caravan or trailer. Proximity to the Homemaker Centre, the Hume Freeway, a family-friendly tavern, transport, and situated mere minutes from Wodonga's CBD complete a genuinely impressive package for big families. Call now for your inspection.

TYPE: Sold

INTERNET ID: 20680262

SALE DETAILS

\$479,000

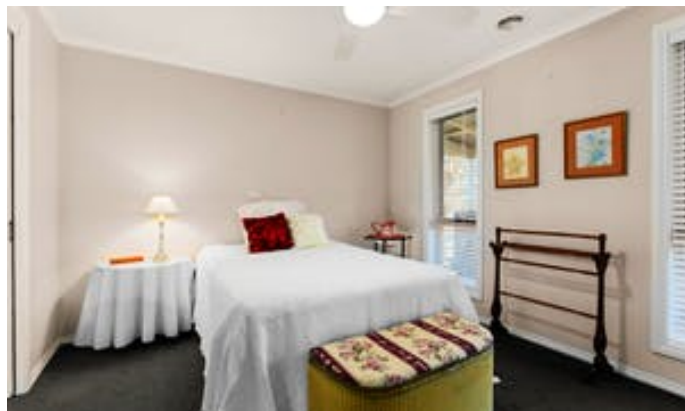
CONTACT DETAILS

Elders Limited
140 High Street
WODONGA, VIC
02 6024 5450

Manuel Gonzalez
0400 478 218

- Bedrooms: 5
- Bathrooms: 3
- Car Parks: 1
- Double garage







Ground Floor

