



52 Gallipoli Street, COROWA, NSW 2646

Lasting Impressions

Recently custom built by quality local builder we are pleased to be offering the marketplace this High Spec home. Comprising 3 bedrooms plus study/option of fourth bedroom which could be perfectly utilised for a home office, fourth bedroom or nursery depending your current needs. As soon as you arrive at the property you are met with quality plantation window shutters and perfectly landscaped gardens but it doesn't end their.

The master includes a luxurious walk through robe to en suite, and the 2 bedrooms are complimented by built in robes and ceiling fans throughout.

A over sized chefs kitchen with extra bench space provides a great space for those who love to cook as well as providing a great breakfast bar which really has become the center hub of the home for the current vendors family and friends. Further enhancing this homes appeal; the living and dining flows seamlessly out to an undercover alfresco area, making the absolute most of the northerly aspect.

Other features include ducted evaporative air conditioning, ducted gas heating, stainless steel appliances , Gas cooktop , timber look flooring a centrally located bathroom. Also our personal favorite a separate laundry that has internal access from a

The particulars contained herein are supplied for information only and shall not be taken as a representation in any respect on the part of the vendor or its agent. Interested parties should contact the nominated person or office for full and current details.

TYPE: Sold

INTERNET ID: 20904896

SALE DETAILS

\$379,000

CONTACT DETAILS

Elders Limited
140 High Street
WODONGA, VIC
02 6024 5450

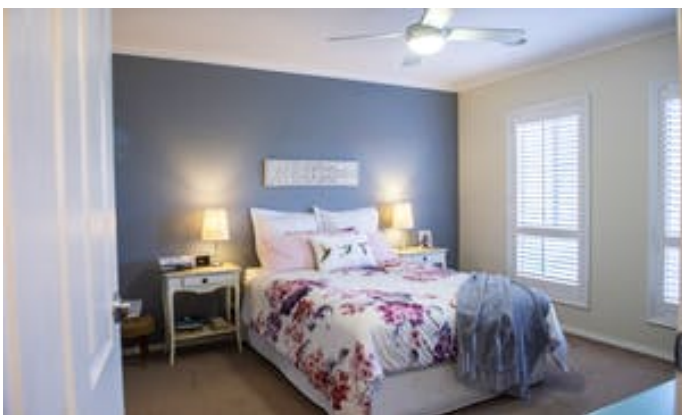
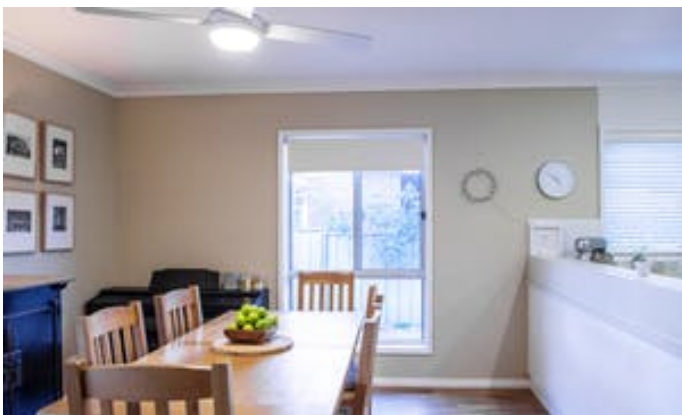
Luke Moloney
0447 780 999

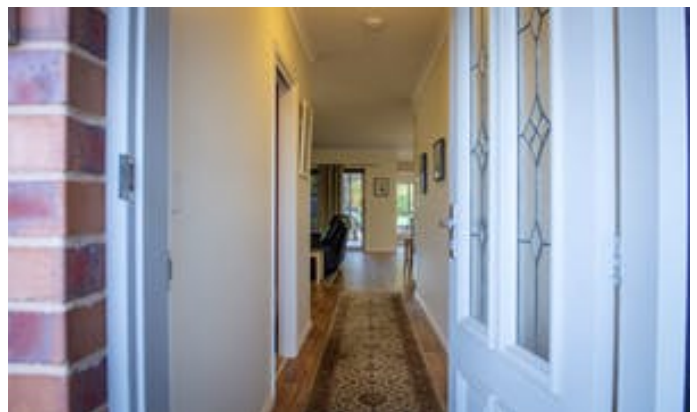
double garage.

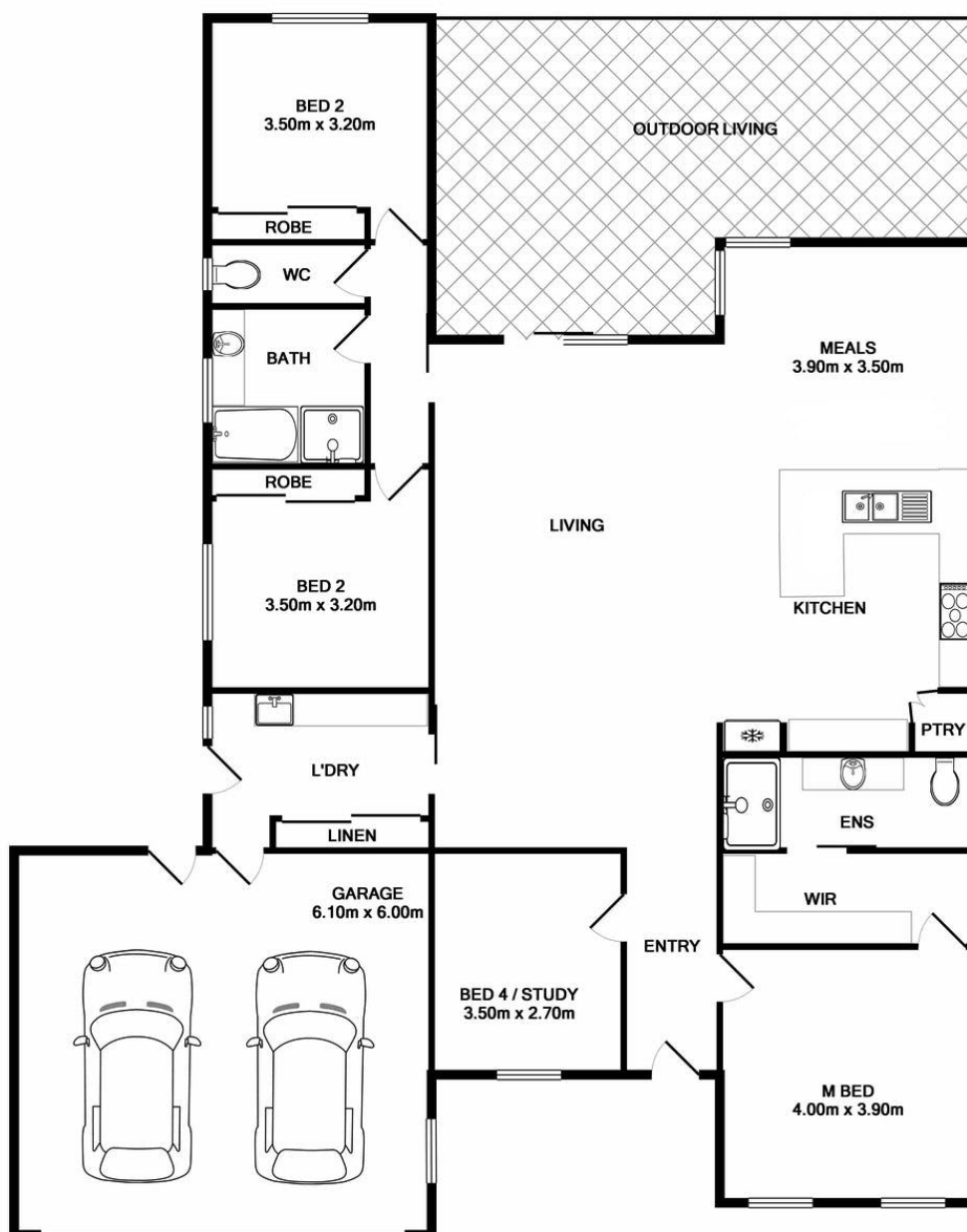
Great side access is available if you would like make the most of the low maintenance 950sqm on offer with building a shed at the rear (STCA).

Call Luke Moloney for your private inspection.

- Land Area 950.00 square metres
- Bedrooms: 4
- Bathrooms: 2
- Double garage







Measurements are approximate. Not to scale. Illustrative purposes only