



7 Drings Way, GOL GOL, NSW 2738

Spacious, Stylish & Ready to Impress in the Heart of Gol Gol

Offered by Marty Deacon, Principal â## Elders Real Estate

Welcome to this exceptional family home that blends space, style, and functionality in one of the most desirable locations â## the beautiful riverside town of Gol Gol.

Step inside to discover:

A generous formal lounge. A luxurious master suite complete with walk-in robe and ensuite.

An open-plan living and dining zone that seamlessly connects to outdoor entertaining area.

A modern kitchen featuring stainless steel electric oven, dishwasher and pantry.

The home's three additional bedrooms (2, 3, and 4) all offer built-in robes, ceiling fans,

The particulars contained herein are supplied for information only and shall not be taken as a representation in any respect on the part of the vendor or its agent. Interested parties should contact the nominated person or office for full and current details.

TYPE: For Sale

INTERNET ID: 20P2723

SALE DETAILS

\$580,000 - \$638,000

CONTACT DETAILS

Elders Mildura, Robinvale & Wentworth

143 Lime Ave, 3500 79-81
Perrin Street, 3549 34
Darling Street, 2648
MILDURA, VIC
5018 6800 5026 3050 5027
3411

Marty Deacon
0429 953 365

and ducted reverse cycle air conditioning for year-round comfort.

The home has been freshly painted and new carpet installed, and includes a security system and an abundance of storage.

Outdoor highlights include:

A paved, covered alfresco entertaining area, perfect for gatherings.

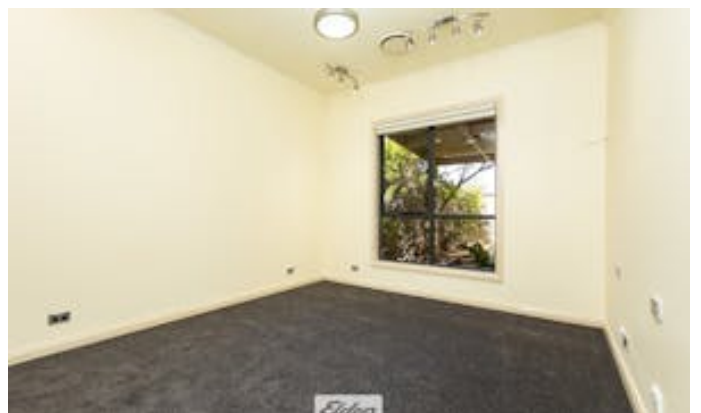
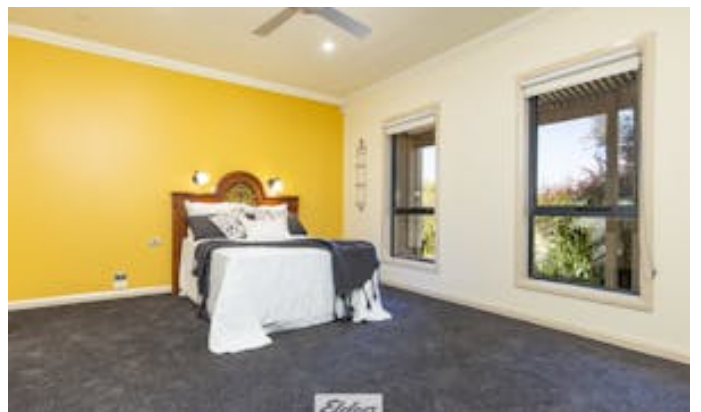
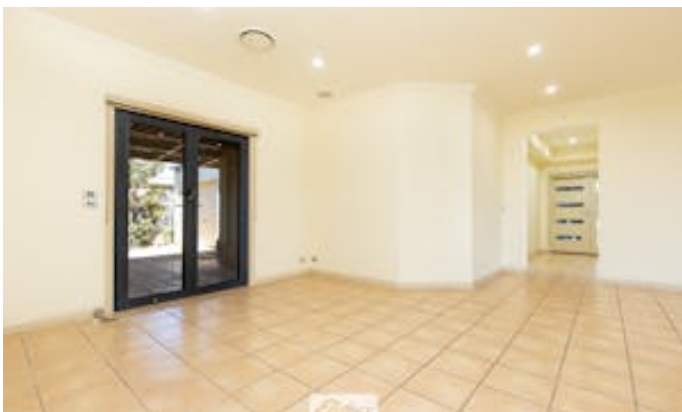
A garden shed and low maintenance garden.

Positioned within walking distance to local school, shops, the renowned Gol Gol Hotel, boat ramp, and riverside parks, this quality residence offers an unbeatable lifestyle opportunity.

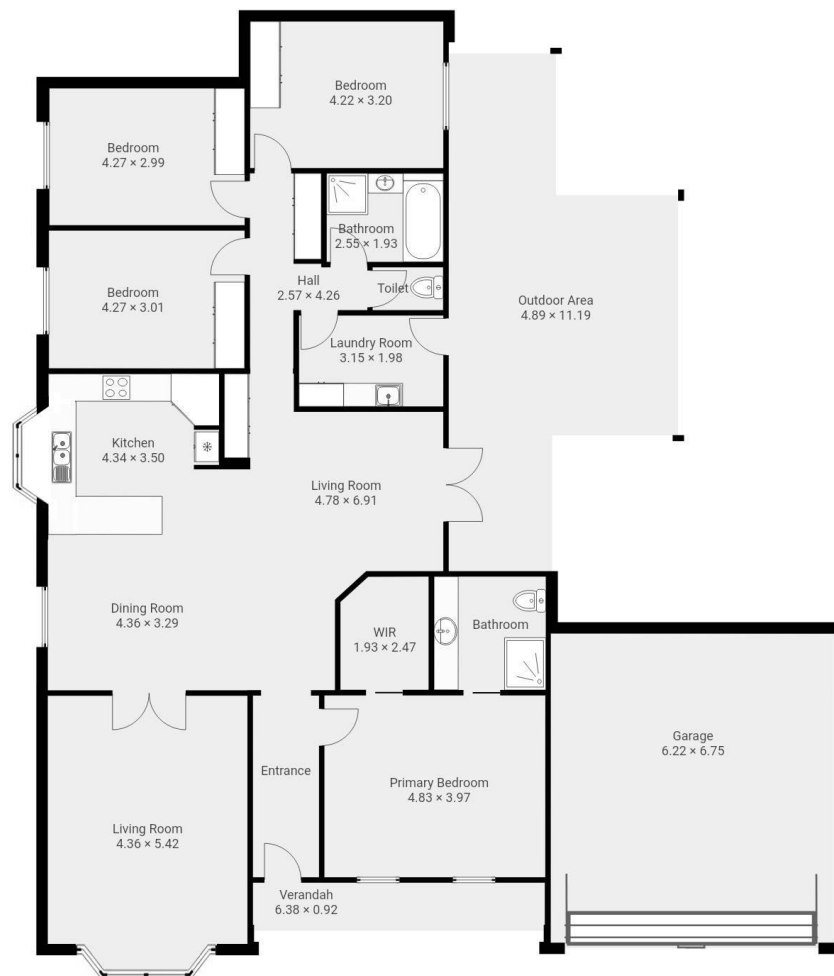
With a rental appraisal of \$640-\$660 per week (approx.) this property would also suit smart investors.

Other features: Car Parking - Surface, Carpeted, Close to Schools, Close to Shops, Exhaust, Heating

- Land Area 572.00 square metres
- Bedrooms: 4
- Bathrooms: 2
- Double garage
- Ensuite







THIS FLOORPLAN IS PROVIDED TO BE USED AS A GUIDE ONLY. VISION HOUSE PHOTOGRAPHY AND THE SELLING AGENT DOES NOT WARRANTY THE SATISFACTORY QUALITY OR ACCURACY OF DIMENSIONS PROVIDED AND THE VIEWER IS HIGHLY RECOMMENDED TO CONDUCT THEIR OWN MEASUREMENTS BEFORE PROCEEDING TO PURCHASE PROPERTY.