



## 4867 Menindee Road, BROKEN HILL, NSW 2880

WILLEILA STATION - 71620.95ACRES – 28985HA

Marty Deacon Elders Real Estate director has great pleasure in offering Willeila Station Broken Hill which is presenting in a healthy state with strong stands of native grasses and herbages due to strict running capacities. Excellent watering system with 6 bores of which 4 supply to poly tanks & troughs via poly pipelines, 2 bores unequipped along with 5 additional natural catchment earth tanks.

Renowned for sheep and cattle breeding & finishing with open plains and undulating red sandy soils, to grey lake bed soils known for strong stands of native grasses, herbages and natural timbers. When in season flood out from Stevens Creek and access and Nettlegoe lake bed grazing.

Well fenced with steel posts, ring lock and plain wires with spacers. Graded fence lines and tracks for ease of operations.

Vendor recommends a running capacity of 3500 dorper breeding ewes and 180 breeding cows.

**TYPE:** For Sale

**INTERNET ID:** 20P2776

### SALE DETAILS

Expressions of Interest  
Closing 27th Feb @  
3:00pm

### CONTACT DETAILS

**Elders Mildura, Robinvale & Wentworth**

143 Lime Ave, 3500 79-81  
Perrin Street, 3549 34  
Darling Street, 2648  
MILDURA, VIC  
5018 6800 5026 3050 5027  
3411

**Marty Deacon**  
0429 953 365

10 year All Steel built 5-bedroom homestead, 3-bedroom cottage, 5 double room quarters, 4 stand wool shed with steel sheep yards along with 3 additional outer yards. Steel cattle yards with ramp and crush. Machinery shedding and workshop. Rural power is connected.

Lake Nettlegoe includes 3000 acres of lake bed grazing along with Stephen's & Redan creeks providing flood out country for finishing prime cattle in season.

Plant and machinery are included, option to purchase livestock.

80kms south east of Broken Hill, 80kms to Menindee & 280kms to Mildura

Inspections by appointment with exclusive selling agent Marty Deacon Elders Real Estate 0429 953365.

- Bedrooms: 13



**HOMESTEAD**

<b>Bedrooms</b>	13
<b>Bathrooms</b>	0











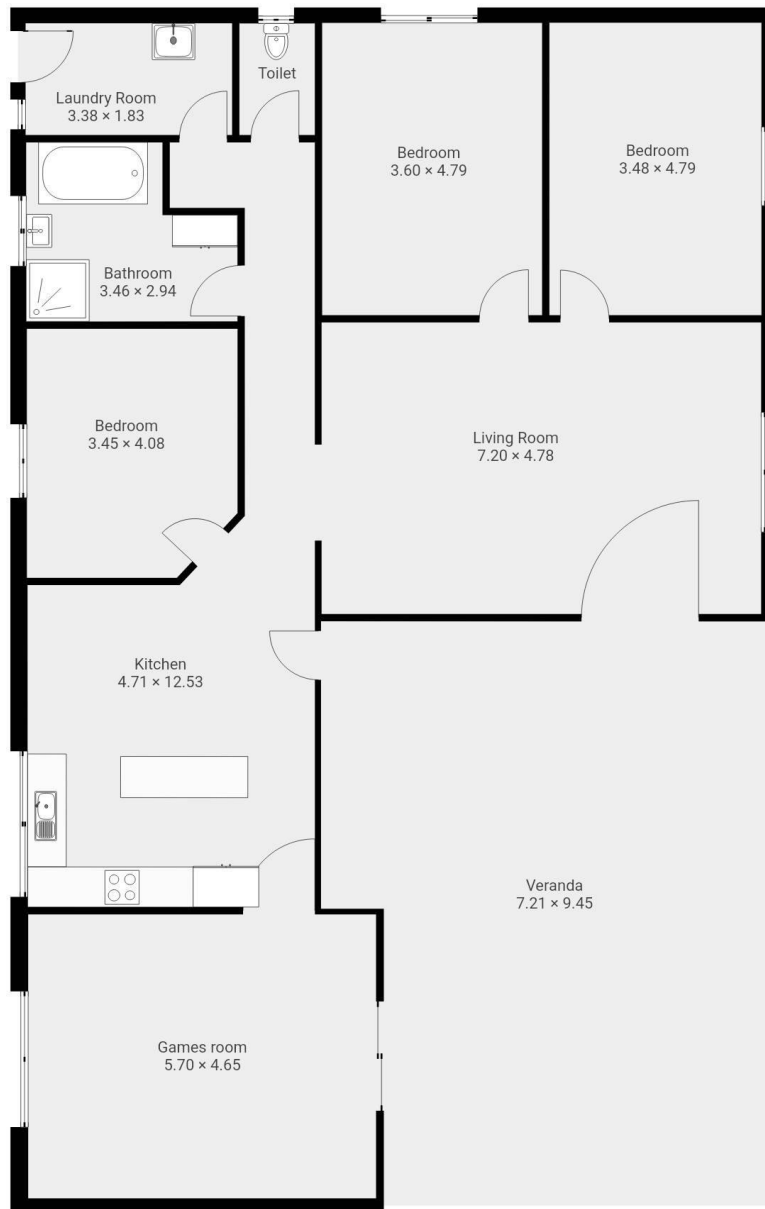






THIS FLOORPLAN IS PROVIDED TO BE USED AS A GUIDE ONLY. VISION HOUSE PHOTOGRAPHY AND THE SELLING AGENT DOES NOT WARRANT THE SATISFACTORY QUALITY OR ACCURACY OF DIMENSIONS PROVIDED AND THE VIEWER IS HIGHLY RECOMMENDED TO CONDUCT THEIR OWN MEASUREMENTS BEFORE PROCEEDING TO PURCHASE PROPERTY.





THIS FLOORPLAN IS PROVIDED TO BE USED AS A GUIDE ONLY. VISION HOUSE PHOTOGRAPHY AND THE SELLING AGENT DOES NOT WARRANT THE SATISFACTORY QUALITY OR ACCURACY OF DIMENSIONS PROVIDED AND THE VIEWER IS HIGHLY RECOMMENDED TO CONDUCT THEIR OWN MEASUREMENTS BEFORE PROCEEDING TO PURCHASE PROPERTY.