



## 460 WATERLOO ROAD, TRAFALGAR EAST, VIC 3824

9 acres Lifestyle Property with Views

**3.64 hectares, 9.00 acres**

Inspection times available - please call to schedule

This 9 acre property, offers privacy with 300 metre long driveway to the original weatherboard house, 2 1/2 bedrooms, bathroom, and large country kitchen and lounge room. Amazing views to the north and south, the 9 acres is highly productive, higher ground, flood resistant.

- 2 1/2 Bedrooms, Main Bathroom
- Large Country kitchen with central dining space
- Lounge off kitchen with gas heating, air conditioner
- Large water storage, bore /well servicing paddocks
- Fencing in reasonable condition with new boundary fences being completed

**TYPE:** Sold

**INTERNET ID:** 21154475

**SALE DETAILS**

**Price Guide \$560,000-  
\$579,000**

**CONTACT DETAILS**

**Jackie Shearer**  
0437 966 769

- Old dairy, yards and 4 bay lockable shed, Hay Shed

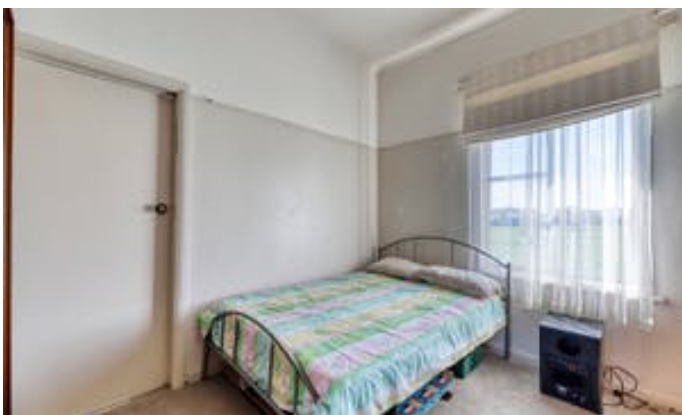
- Carport to House

Only 1.5 hours from Melbourne with an easy run, straight onto the M1 freeway. Great views and outlook to the ranges, view that capture West Gippsland at its finest.

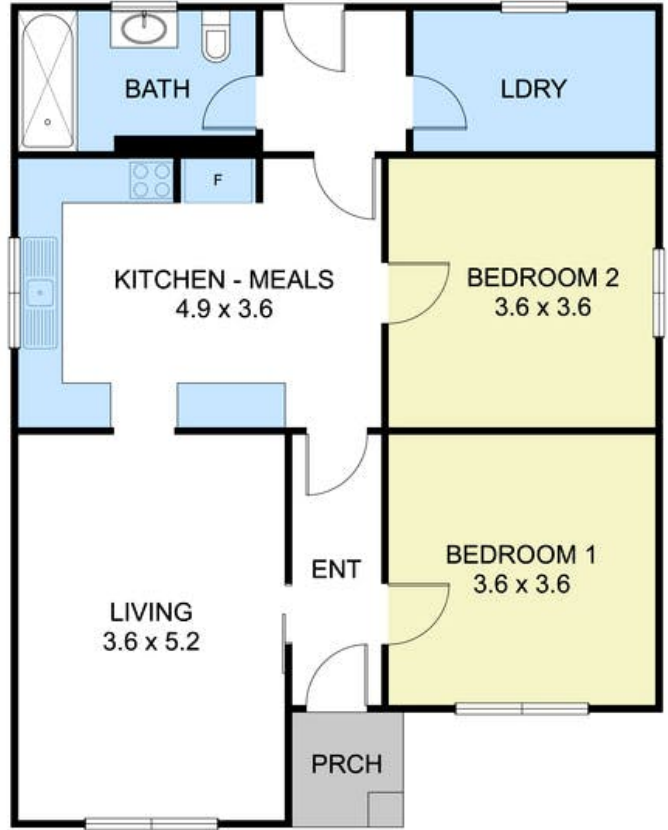
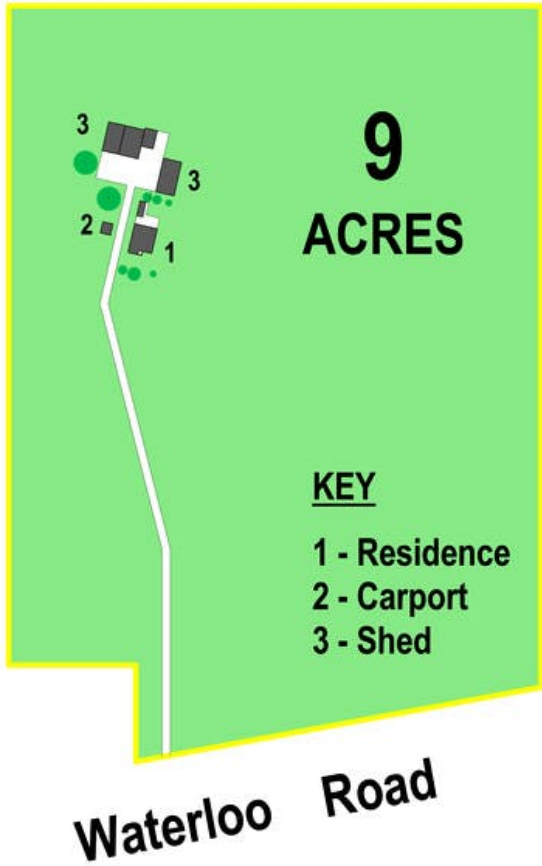
- Land Area 3.642171 hectares
- Bedrooms: 2
- Bathrooms: 1

## HOMESTEAD

<b>Bedrooms</b>	2
<b>Bathrooms</b>	1







**460 WATERLOO ROAD, TRAFALGAR EAST**

THE FLOOR PLAN IS NOT TO SCALE. MEASUREMENTS ARE INDICATIVE AND IN METERS. EXTERIOR ELEMENTS ARE NOT IN POSITION. PLANS SHOULD NOT BE RELIED ON. INTERESTED PARTIES SHOULD MAKE AND RELY ON THEIR OWN ENQUIRIES.

Under Roof Area 93m<sup>2</sup>  
10 Square

