



31 Nordsvan Drive, WODONGA, VIC 3690

Mediterranean Magnificence

Suspended on an elevated 1849m² allotment in an exclusive pocket of Willow Rise, this Tuscan inspired home delivers spacious family living with that characterful and continental flair. An iconic Wodonga residence for many years and solid double-brick in construction, you walk up stone steps past beautiful low maintenance gardens with cypress, citrus and olive trees, and then once inside, you're greeted by a marble staircase that sweeps up to the top level. The first level boasts a massive formal lounge, a formal dining room, a cosy meals area, a study, and the simply jaw-dropping bespoke kitchen, with black granite counter tops and splashbacks, custom American Oak cabinetry, high-end tapware and Miele appliances, bulkhead detailing, and a walk-in pantry; all with parquetry flooring underfoot, marble window sills, custom timber doors, and 10ft ceilings. There's also a big laundry, full bathroom, and access out to a paved and peaceful atrium, with a water fountain and established lemon and olive trees. Downstairs is the rumpus / games room that's presently being used as guest accommodation. It has a striking fireplace, Italian floor tiles, built-in bar, full ensuite, and additional storage. The top level features 4 generous bedrooms, a sitting area, an office, and a family bathroom. The grand master offering a huge WIR, large ensuite and a Juliet balcony, and all the other bedrooms have reverse-cycle heating and cooling and directly open out to the gorgeous balcony that wraps around the home and then connects to the huge elevated undercover entertaining area, with amazing views across Wodonga. Your summer get-togethers with family and friends up here will be truly unforgettable. Need more entertaining options? How about a shimmering inground pool with ample space for sunbeds? There's also the oversized triple garage, a 8x10m shed

TYPE: Sold

INTERNET ID: 21223522

SALE DETAILS

\$749,000

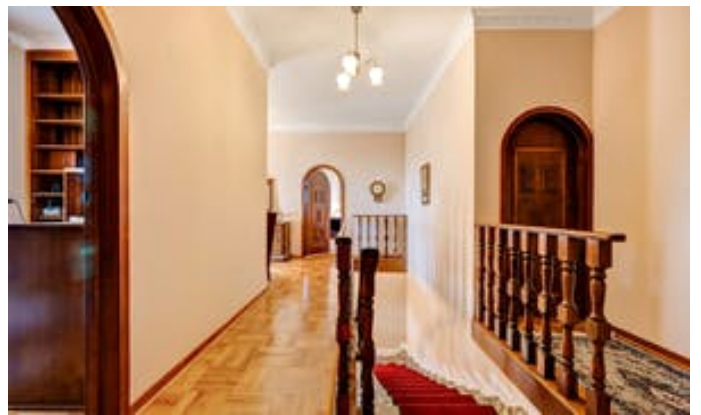
CONTACT DETAILS

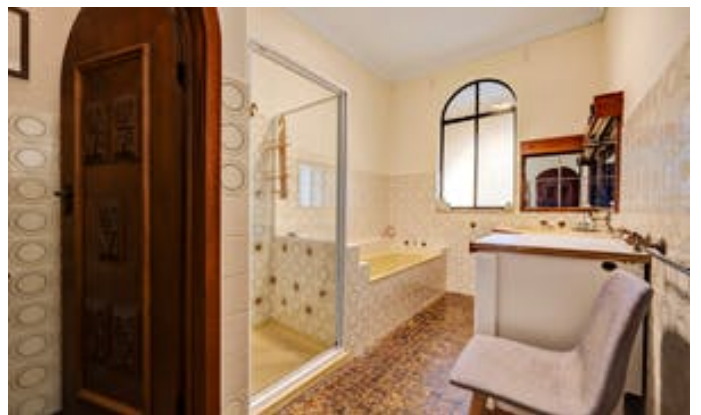
Elders Limited
140 High Street
WODONGA, VIC
02 6024 5450

Manuel Gonzalez
0400 478 218

with 3-phase power and direct street access, and more low maintenance gardens and trees with automated irrigation systems. With walking reserves, schools, shops, sporting facilities and transport all within easy reach, this is European-style and charm living at its rare best, so call now for your inspection.

- Land Area 1,849.00 square metre
- Building Area: 650.00 square metres
- Bedrooms: 5
- Bathrooms: 4
- 5 car garage









our priority during the current CoVid-19 pandemic.

While we are conducting private inspections, these are limited to two people at a time.

Our staff will also be wearing gloves during all inspections, will be carrying hand sanitiser for the convenience of clients and will be wiping down premises with disinfectant wipes at the conclusion of our inspection.

We ask that if you are unwell, have just returned from overseas or have been in contact with anyone suspected of having contracted CoVid-19 you do not attend the property.



