

23 Keswick Parkway, DUBBO, NSW 2830

WHEELCHAIR FRIENDLY AND ACCESSIBLE FAMILY HOME

Spacious single level 4 bedroom home located in Keswick Estate, within close proximity of Orana Mall Shopping Centre, Western Plains Medical Centre, Blue Ridge Business Park and the Sheraton Road schooling precinct. Purposely designed for ease of wheelchair accessibility, home features include 4 spacious bedrooms, walk in wardrobe & en suite off the main bedroom, a formal living room, large open plan family/meals room off the modern kitchen, separate rumpus room, wheelchair accessible main bathroom, tiled laundry with built in storage, double garage under roof with power, lights and internal access to the home. There is ducted reverse cycle air conditioning, natural gas heating provision and hot water, tiled alfresco area under roof, solar panels, private well fenced rear yard. A rare opportunity not to be missed.

Other features: Built-In Wardrobes, Close to Schools, Close to Shops, Close to Transport, Formal Lounge, 3 living areas

- Land Area 850.00 square metres
- Building Area: 250.00 square metres
- Bedrooms: 4
- Bathrooms: 2
- Double garage
- Air Conditioning

TYPE: Sold

INTERNET ID: 21572726

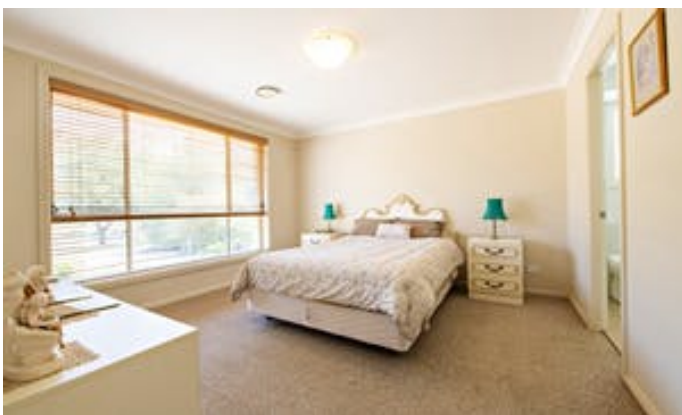
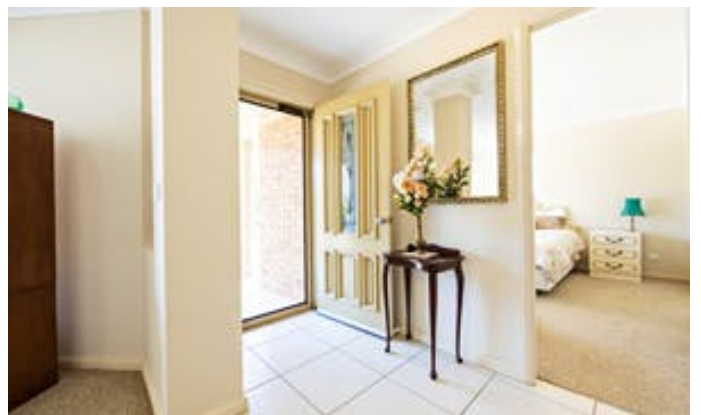
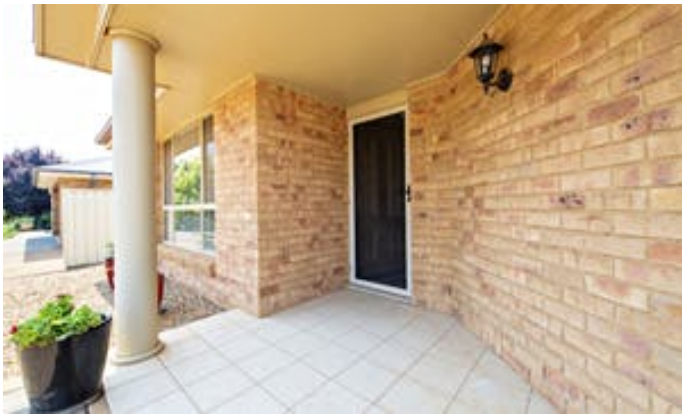
SALE DETAILS

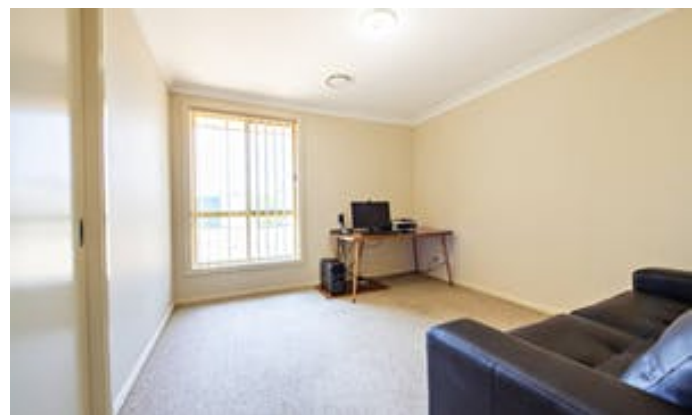
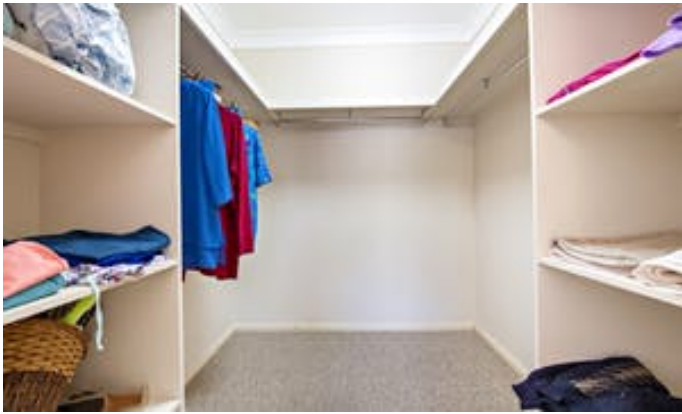
\$450,000

CONTACT DETAILS

Elders Real Estate
36 Wingewarra Street
Dubbo, NSW
02 6881 7800

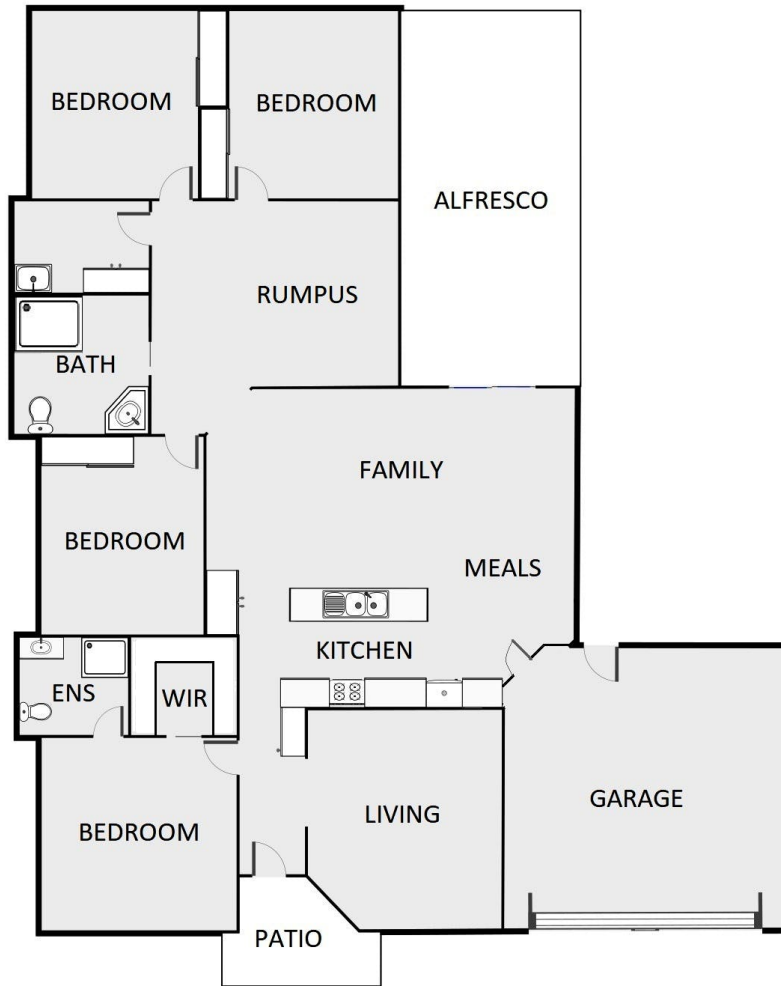
Graeme Stapleton
0427 822 805











PLEASE NOTE: THIS FLOOR PLAN IS FOR ILLUSTRATIVE PURPOSES ONLY AND IS NOT TO SCALE.