



3 Namoi Place, SYLVANIA WATERS, NSW 2224

Peaceful, Spacious and Central - 785sqm

This family home is ideally configured for the growing or extended family with multiple living areas and stunning outdoor entertaining spaces. Enviably located in a quiet cul-de-sac whilst only moments to waterways, Westfield Miranda and quality local schools.

- Five bedrooms fitted with built-ins, sixth bedroom or study
- Master bedroom located on the lower level with ensuite
- Configured for family living with multiple living areas
- Neat three way bathroom provides family functionality
- Air-conditioning, fire place, gas points and workshop
- Impressive outdoor entertaining including outdoor kitchen
- Large 785sqm level block complete with in-ground pool
- Gated entry to off-street parking for up to seven cars

TYPE: Sold

INTERNET ID: 21613003

SALE DETAILS

SOLD

CONTACT DETAILS

Sylvania

3/202 Princes Highway
SYLVANIA, NSW
02 9522 6999

Terry Flaskos

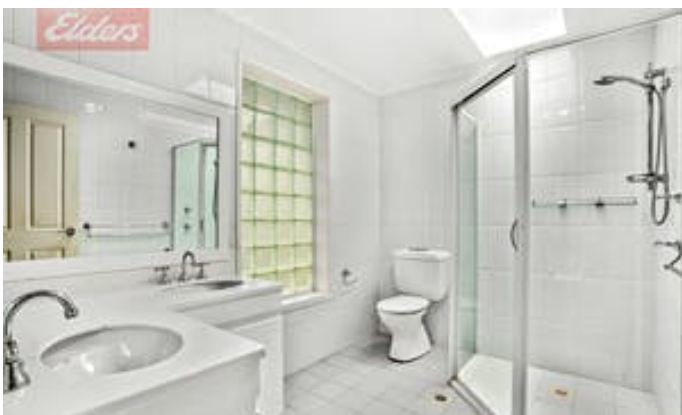
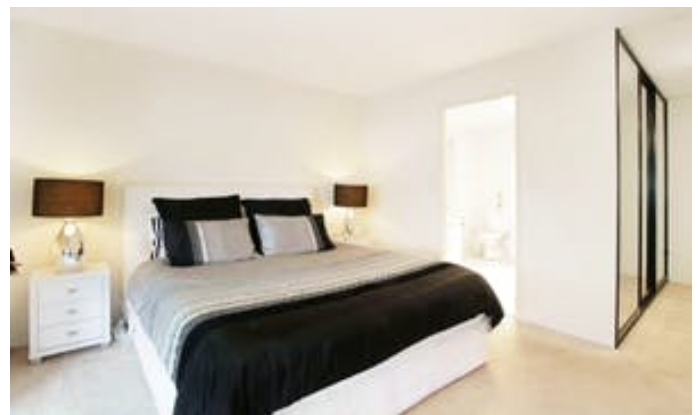
0412 444 832

- Whisper quiet cul-de-sac location, moments to waterways
- Minutes to Westfield Miranda and quality local schools

Private inspections are welcome. For more information or to discuss this property please contact Terry Flaskos 0412 444 832.

Other features: Built-In Wardrobes, Close to Schools, Close to Shops, Close to Transport, Fireplace(s)

- Land Area 785.00 square metres
- Bedrooms: 5
- Bathrooms: 3
- Single garage
- Swimming Pool
- Air Conditioning







3 Namoi Place, Sylvania Waters

Approximate Gross Internal Area = 261.4 sq m (Including Workshop)
 Approximate Gross External Area = 169 sq m

Please note: All stated dimensions are approximate only.
 Particulars given are of general information only and do not constitute any representation on the part of the vendor or agent.

