



19 Gilson Place, HOWLONG, NSW 2643

Luxury Living Near the Golf Course!

Step into effortless luxury with this immaculate, feature-packed home perfectly positioned just moments from the Howlong Golf Club. Designed for modern living and exceptional entertaining, this stunning residence offers space, comfort, and versatility in every corner.

Boasting four generously sized bedrooms, this home is ideal for growing families or those working from home. The master suite is a true retreat, complete with a stylish ensuite and walk-in robe, while all additional bedrooms feature built-in robes for ample storage.

At the heart of the home lies a spacious open-plan living and dining area, filled with natural light and seamlessly connecting to the outdoors. The modern kitchen is a standout, equipped with a 900mm gas cooktop, oven, and an expansive walk-in pantry offering plenty of cupboard and bench space for all your culinary needs.

Enjoy year-round comfort with ducted heating and cooling, while added features such as wood fire heating and ceiling fans throughout provide warmth and airflow during every season.

TYPE: For Sale

INTERNET ID: 21P10304

SALE DETAILS

\$779,000

CONTACT DETAILS

Albury

140 High Street
WODONGA, VIC
02 6021 2199

Kristy Leathem
0419 551 224

The home includes two well-appointed living areas, giving you flexibility for relaxation, entertainment, or family time. The main bathroom is designed for convenience, featuring a full-size freestanding bath and a separate toilet.

Step outside to your private entertaining oasis-an enormous undercover alfresco area complete with ceiling fans and ample space to host gatherings of any size. The fully enclosed yard offers peace of mind for families and pets, along with a garden shed for additional storage.

Car enthusiasts and adventurers will appreciate the double lock-up garage with internal access, as well as the extra space to securely park a caravan or boat. This property also benefits from the inclusion of solar panels, providing improved energy efficiency and the potential for reduced electricity costs.

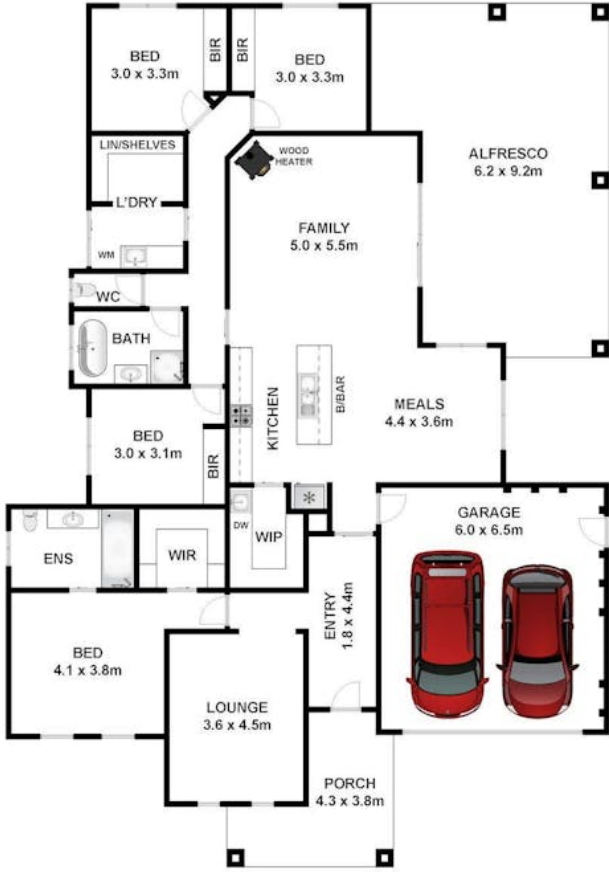
This property truly offers the complete package-modern design, exceptional space, and unbeatable functionality in a prime location.

Don't miss your chance to secure this outstanding home-inspect today and experience the lifestyle it has to offer.

- Land Area 1,142.00 square metre
- Bedrooms: 4
- Bathrooms: 2
- Car Parks: 2







GROUND FLOOR



SITE PLAN

Whilst bwrn.com.au has made every attempt to ensure the accuracy of the floor plan contained here, measurements are approximate and no responsibility is taken for any error, omission, or mis-statement. This plan is for illustrative purposes only.



19 Gilson Place, Howlong





Whilst bwrn.com.au has made every attempt to ensure the accuracy of the floor plan contained here, measurements are approximate and no responsibility is taken for any error, omission, or mis-statement. This plan is for illustrative purposes only.



19 Gilson Place, Howlong

